

HONDA

Power

Equipment

HTA

OPERATOR'S MANUAL

**42" TWO-STAGE SNOWBLOWER
MODEL NO. SB752A**

for the
**HONDA RT5000
TRACTOR**

WARRANTY SERVICE

Your satisfaction and goodwill are important to your dealer and to us. All Honda warranty details are explained in the Distributor's Limited Warranty. Normally, any problems concerning the product will be handled by your dealer's service department. If you have a warranty problem that has not been handled to your satisfaction, we suggest you take the following action:

- Discuss your problem with a member of dealership management. Often complaints can be quickly resolved at that level. If the problem has already been reviewed with the Service Manager, contact the owner of the dealership or the General Manager.
- If your problem still has not been resolved to your satisfaction, contact the Power Equipment Customer Relations Department of American Honda Motor Co., Inc:

American Honda Motor Co., Inc.
Power Equipment Customer Relations Department
P.O. Box 50
Gardena, California 90247-0805
Telephone: (213) 604-2400

We will need the following information in order to assist you:

- Your name, address, and telephone number.
- Product model and serial number
- Date of purchase
- Dealer name and address
- Nature of the problem

After reviewing all the facts involved, you will be advised of what action can be taken. Please bear in mind that your problem will likely be resolved at the dealership, using the dealer's facilities, equipment, and personnel, so it is very important that your initial contact be with the dealer.

Your purchase of a Honda product is greatly appreciated by both your dealer and American Honda Motor Company. We want to assist you in every way possible to assure your complete satisfaction with your purchase.

Current customer service contact information:

United States, Puerto Rico, and U.S. Virgin Islands:

Honda Power Equipment dealership personnel are trained professionals. They should be able to answer any question you may have. If you encounter a problem that your dealer does not solve to your satisfaction, please discuss it with the dealership's management. The Service Manager or General Manager can help. Almost all problems are solved in this way.

If you are dissatisfied with the decision made by the dealership's management, contact the Honda Power Equipment Customer Relations Office. You can write:

American Honda Motor Co., Inc.
Power Equipment Division
Customer Relations Office
4900 Marconi Drive
Alpharetta, GA 30005-8847

Or telephone: (770) 497-6400 M-F, 8:30 am - 5:00 pm EST

When you write or call, please provide the following information:

- Model and serial numbers
- Name of the dealer who sold the Honda power equipment to you
- Name and address of the dealer who services your equipment
- Date of purchase
- Your name, address, and telephone number
- A detailed description of the problem

Thank you for purchasing an HTA snowblower attachment for your Honda Tractor.

This manual covers the assembly, operation, and maintenance of the HTA Model SB752A 42" Two-Stage Snowblower. For your convenience, a parts guide and detailed warranty information are also included in this publication.

NOTE: The illustrations in this manual are intended to serve as a reference and may not necessarily depict the actual model listed above. The information in this publication is based on the latest product information available at the time of printing. American Honda Motor Co., Inc. reserves the right to make changes at any time without notice and without incurring any obligation.

No part of this publication may be reproduced without written permission.

Pay special attention to the statements preceded by the following symbols:



This safety alert symbol identifies important safety messages in this manual. Whenever you see it, be alert to the possibility of personal injury and carefully read the message that follows.



DANGER: Indicates severe personal injury or loss of life will result if instructions are not followed.



WARNING: Indicates a strong possibility of severe personal injury or loss of life if instructions are not followed



CAUTION: Indicates a possibility of equipment damage if instructions are not followed.

NOTE: Gives helpful information.

HTA attachments are designed to give safe and dependable service if assembled and operated according to instructions.

If a problem should arise, or if you have any questions about your snowblower, consult an authorized Honda Tractor dealer.

General Safety	3
• Safety Label Locations	5
Assembly and Installation	6
• Rotation Handle Support	6
• Chute and Rotator	6
• Auger Box and Drive Shaft	7
Operation	10
• Controls	10
• Snow Removal	11
• Guidelines	12
• Adjustments	13
Maintenance	14
Removing the Snowblower	15
Storage	15
Parts	17
Distributor's Limited Warranty	25

GENERAL SAFETY

⚠ WARNING: Read this owner's manual carefully and familiarize yourself fully with its safety recommendations and operating procedures before using the attachment. Follow the instructions in this publication at all times, and insist that those who work with you do likewise. Failure to do so could result in personal injury or equipment damage.

SAFE OPERATING RULES

- Know how to stop the snowblower quickly, and understand the operation of all controls.
- Children and pets must be kept away from the area of operation to avoid injury from flying debris and contact with the snowblower.
- Never permit anyone to operate the snowblower without proper instruction. Never allow children to operate this equipment.
- Before operating the snowblower, inspect the area in which you are going to clear snow. Remove debris and other obstacles the snowblower might strike or throw, as they may cause injury or damage the snowblower.
- Adjust the snow discharge chute to avoid hitting the operator, bystanders, windows, and other objects with thrown snow. Stay clear of the snow discharge chute while the engine is running.
- The use of tire chains and counterweights for better traction and stability is advised; use only those recommended by American Honda.
- Inspect the snowblower before operating it. Repair any damage and correct any malfunction before operation. Remove any ice that has accumulated around the auger and fan.
- Never attempt to make any adjustments to the snowblower while the tractor's engine is running.
- Do not use the snowblower when visibility is poor. Under conditions of poor visibility, there is a greater risk of striking an obstacle or causing injury.
- Do not wear loose-fitting clothing which might become entangled in moving parts.
- Prolonged exposure to loud noise can cause permanent impairment or loss of hearing. Wear a suitable protective device such as an external hearing protector (earmuffs) or ear plugs to protect against loud or otherwise objectionable noise.
- Never operate the snowblower unless all of its guards, plates and other protective devices are in place.
- Do not put hands or feet near rotating parts. If the snow discharge chute becomes clogged, stop the engine and use a wooden stick to unclog it. Never put your hand into the snow discharge chute while the engine is running; serious injury could result.
- Use extreme caution when operating on or crossing a gravel drive, walk or road. Stay alert for the hidden hazards of traffic.
- Do not attempt to clear steep slopes. When clearing a sloping surface, always drive up and down the face of the slope, never across the face. Exercise extreme caution when changing direction on a slope.
- Keep a careful watch for objects that could enter the snowblower while it is in operation.

GENERAL SAFETY (Continued)

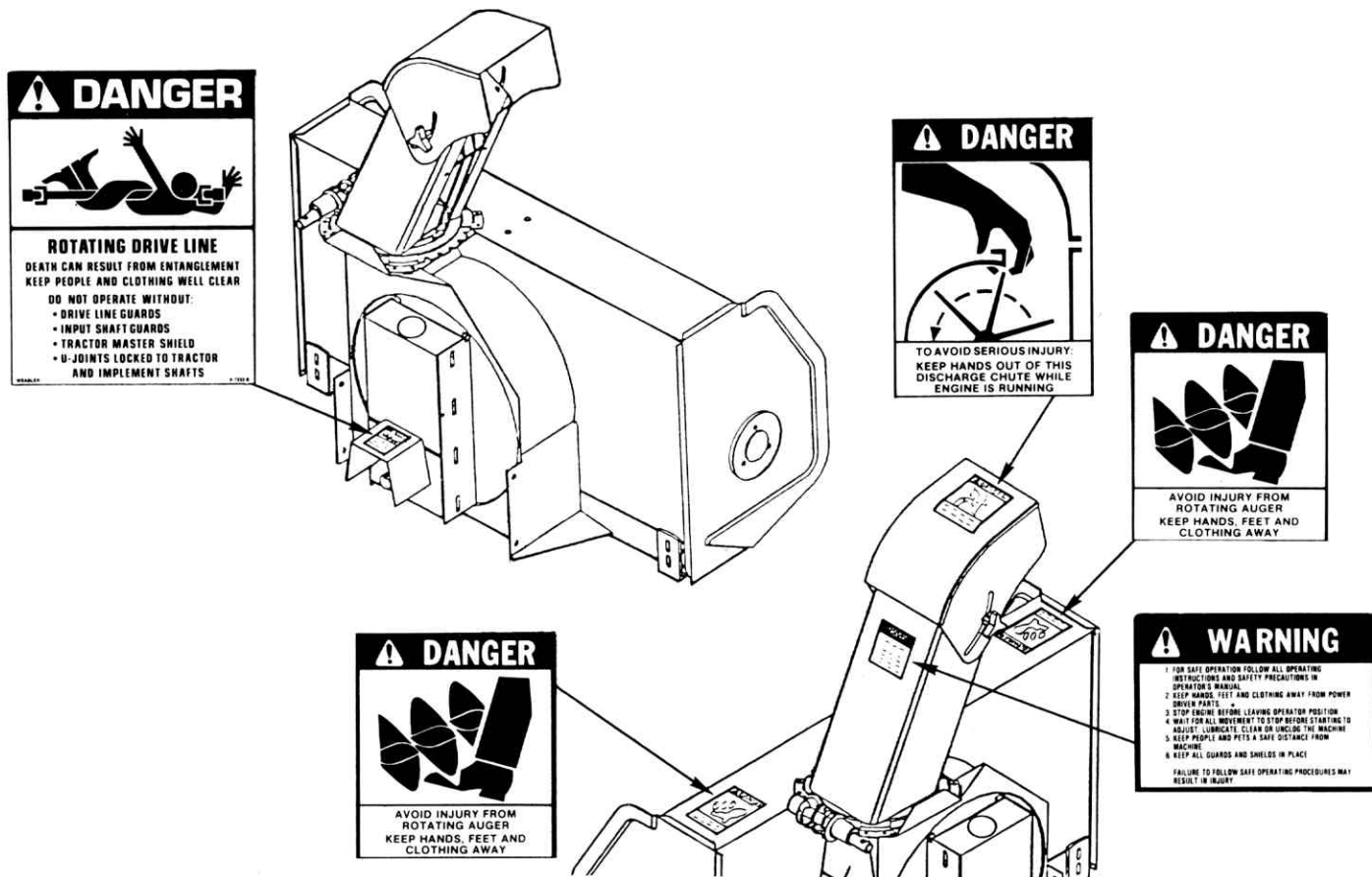
SAFE OPERATING RULES (continued)

- If you hit an obstacle while operating the snowblower, stop the engine immediately, and check for damage. Damaged equipment may increase the possibility of injury during operation.
- If the snowblower should start to vibrate abnormally, stop the engine immediately and check for the cause. Vibration is generally a warning of trouble.
- Move the P.T.O. lever to the OFF position and raise the snowblower whenever you are not actually clearing snow.
- Reduce the tractor ground speed on slippery surfaces.
- Use care when backing up.
- Stop the engine whenever you leave the operator's position, before unclogging the auger or fan housing and before making any inspections, adjustments or repairs.
- Before leaving the tractor unattended, always return the P.T.O. lever to the OFF position, lower the snowblower, shift the transmission to neutral, set the parking brake, stop the engine and remove the key from the ignition switch to prevent children or unauthorized persons from starting the engine.

GENERAL SAFETY (Continued)

SAFETY LABEL LOCATIONS

NOTE: Replacement safety labels can be ordered from your dealer.



ASSEMBLY AND INSTALLATION

⚠ WARNING: For your safety, this attachment should be assembled and installed by a mechanically proficient person who has the proper tools, preferably an authorized Honda Tractor dealer.

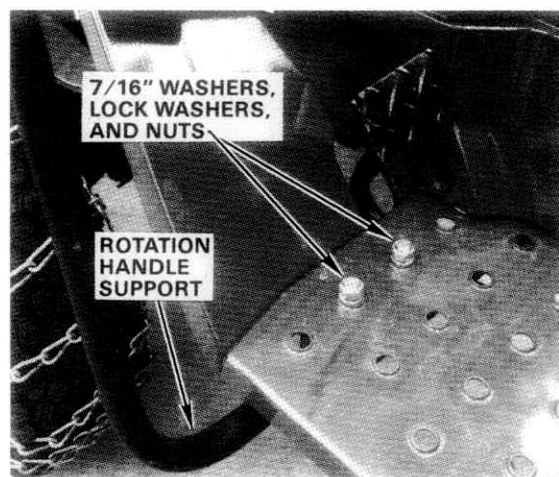
NOTE:

- In order to mount this snowblower on a Honda Tractor, the tractor must be fitted with an HTA Model QH752A Quick Hitch Kit.
- Right and left are determined from the operator's point of view.
- Most bolts and nuts used in assembly are course-thread SAE fasteners.

ROTATION HANDLE SUPPORT

Using two 7/16" x 1 1/4" carriage bolts, two 7/16" plain washers, two 7/16" lock washers and two 7/16" nuts, attach the rotation handle support to the underside of the left floorboard as shown.

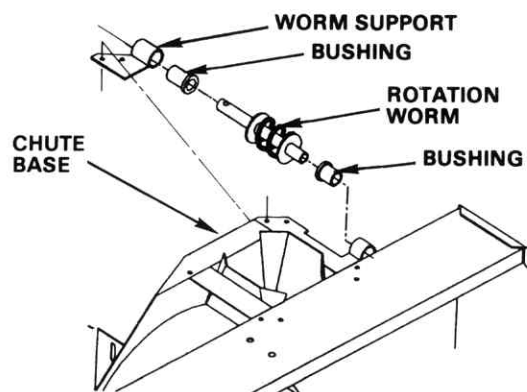
NOTE: Install the washers and nuts on the top side of the floorboard.



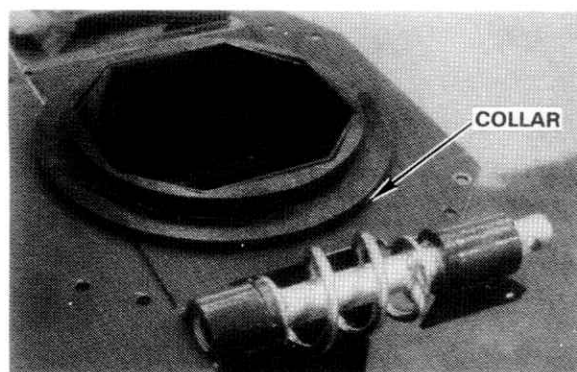
CHUTE AND ROTATOR

1. Remove the worm support from the chute base and discard the shipping bolt.
2. Insert the long bushing into the worm support and install them on the rotation worm shaft
3. Insert the short bushing into the welded sleeve on the chute base. Install the worm assembly in the sleeve. The worm support attaching plate goes on the underside of the chute base lip.

NOTE: The attaching plate will be secured later when the chute is installed.



4. Install the collar on the chute base. (Only one position provides a perfect fit.)



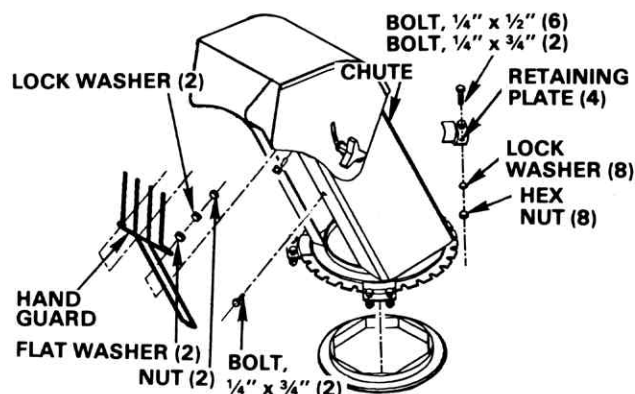
ASSEMBLY AND INSTALLATION (Continued)

5. Install the chute over the collar and then secure the chute and worm support attaching plate to the base with the retaining plates, bolts, lock washers and nuts. Tighten all bolts securely.

NOTE: Use the longer (3/4") mounting bolts at the worm support attaching plate position.

6. Place the hand guard in the chute with the forked portion inside the chute and the handle end on the outside of the collar.

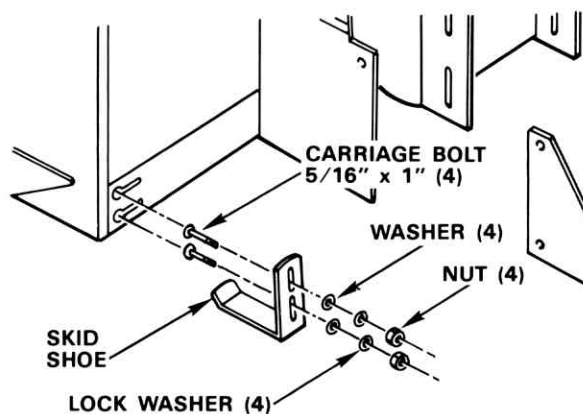
Install the hand guard mounting bolts with their heads on the outside of the chute. Install the flat washers, lock washers, and nuts. Tighten the nuts securely.



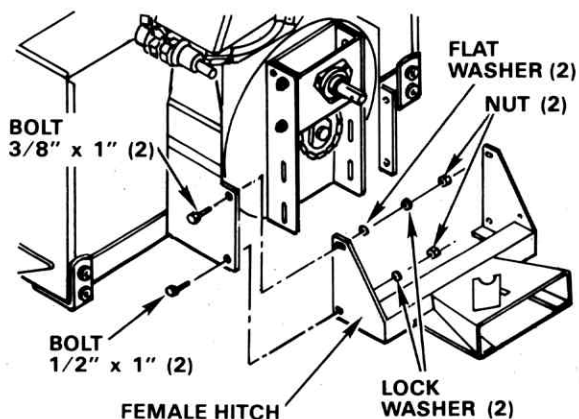
AUGER BOX AND DRIVE SHAFT

1. Insert two carriage bolts through each skid shoe from inside the bend, then loosely install a flat washer, lock washer and nut on each bolt. Insert the bolt heads into the holes in the bottom outer angles of the auger box. Slide the square shank portion of the bolt heads into the slots and tighten the bolts securely.

NOTE: Refer to page 13 for skid shoe adjustment.

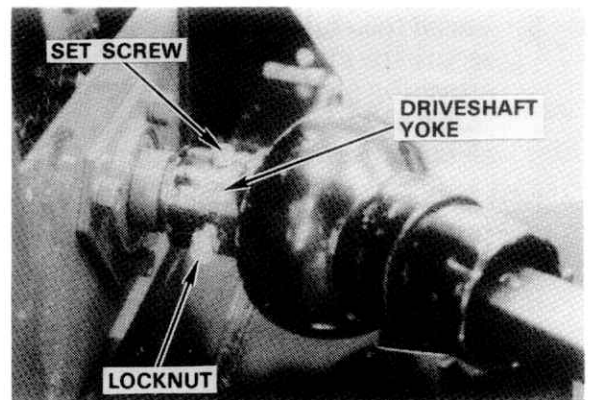


2. Attach the female hitch to the box using the hardware shown. Loosely tighten the nuts.

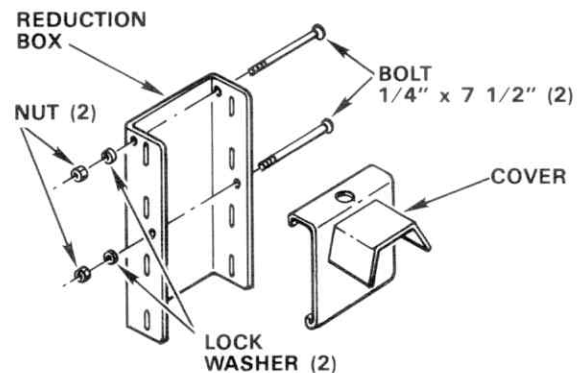


ASSEMBLY AND INSTALLATION (Continued)

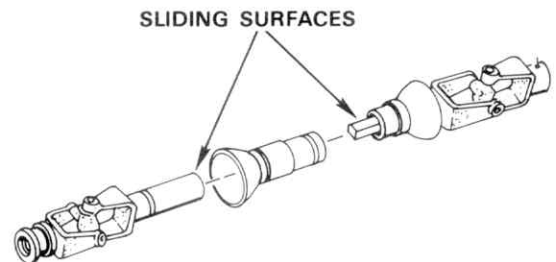
3. Remove the paint from inside the drive shaft yoke. Install the $\frac{1}{4}$ " x $\frac{1}{4}$ " x $1\frac{1}{4}$ " key in the reduction shaft keyway, and slide the yoke over the reduction shaft.
4. Secure the yoke to the shaft with a $\frac{1}{4}$ " x $2\frac{1}{2}$ " bolt and nylon lock nut: tighten securely. Tighten the set screw in the yoke to lock the key in place.



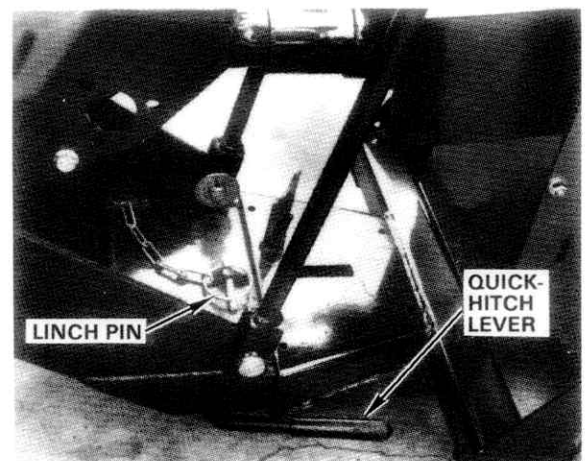
5. Install a $\frac{1}{4}$ " x $7\frac{1}{2}$ " bolt through the top holes in the reduction box; loosely install a lock washer and nut. Hook the cover over the bolt and install the lower bolt. Tighten both bolts securely.



6. Grease the drive shaft sliding surfaces and mate the halves.



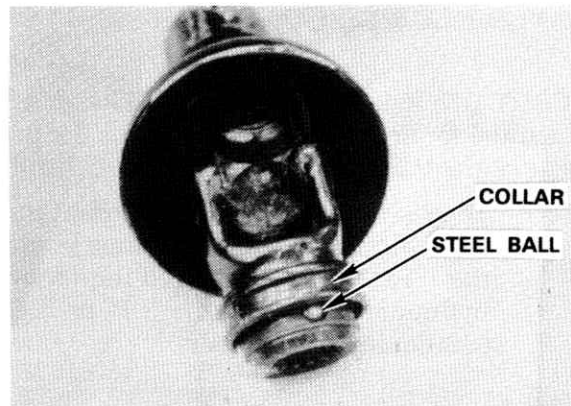
7. Carefully slide the female hitch onto the male quick-hitch on the tractor. Move the quick-hitch lever to "LOCK", and secure it with a linch pin as shown.



ASSEMBLY AND INSTALLATION (Continued)

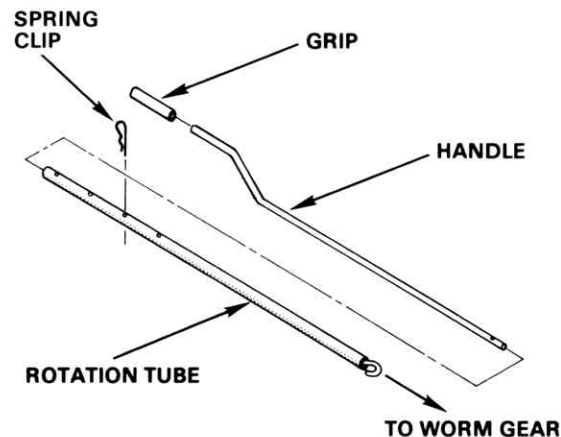
8. Pull down the collar on the P.T.O. end of the shaft. Align the splines and push the drive shaft onto the tractor P.T.O. until the ball bearings drop into the detent. Push up the collar.

⚠ WARNING: The drive shaft turns at very high speed. If the coupler is not locked to the P.T.O. shaft at the tractor end, or if the blower end is not secured properly, the drive shaft can fly loose with great force, and is capable of causing serious injury or death.



9. Make sure that the blower is 90° to a level surface, then tighten the female hitch mounting bolts. (See step 2 on page 7.)
10. Place the hooked end of the chute rotation tube through the hole in the rotation worm gear shaft. Place the rotation handle through the support and insert it into the tube; secure with a spring clip.

Apply weatherstrip cement to the inside of the handle grip and install the grip on the handle.

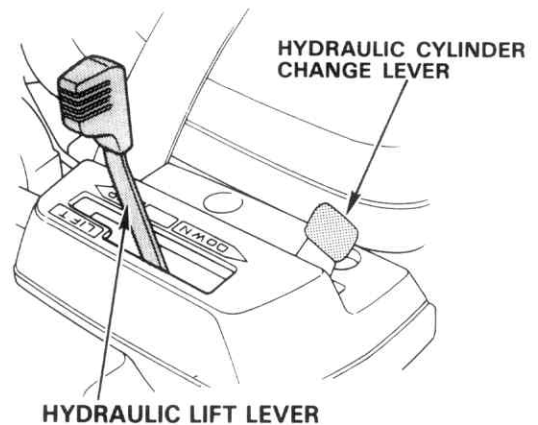


OPERATION

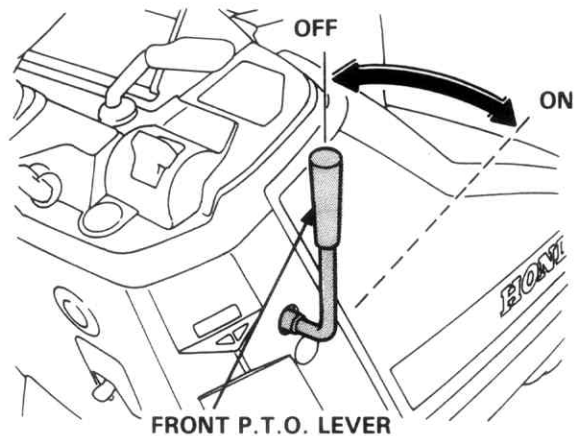
SNOWBLOWER CONTROLS

CAUTION: Refer to your tractor's Owner's Manual for detailed instructions for the proper use of the P.T.O. and Hydraulic Lift controls.

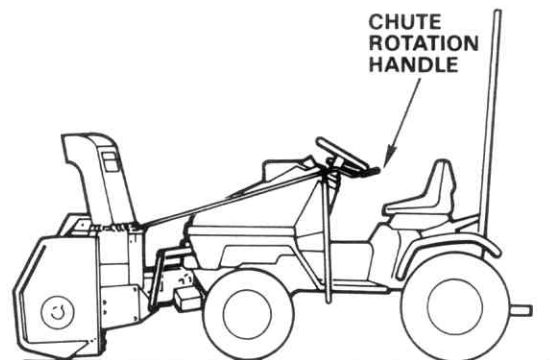
1. To raise or lower the snowblower, move the hydraulic cylinder change lever to the "FRONT" position, and then move the hydraulic lift lever to the "UP" or "DOWN" position as appropriate.



2. Move the P.T.O. lever forward to the "ON" position to engage the snowblower. Pull the P.T.O. lever back to the "OFF" position to stop the snowblower.



3. Turn the chute rotation handle clockwise or counterclockwise as necessary to control the direction of the chute.



OPERATION (Continued)

SNOW REMOVAL



WARNING: Do not allow anyone other than the operator on the tractor. Keep the area to be worked clear of all persons.

NOTE: For extra traction, always use counterweights and tire chains. Inflate the front tires to the maximum recommended pressure.

1. Make sure that the snowblower is clear of snow before engaging the auger, and check that the auger and fan operate freely.
2. Check the worm gear oil level and add AGMA 5 EP or 90 wt. hypoid gear oil, if necessary. (see page 14).
3. Check the shear bolts and tighten, if necessary (see page 14).
4. If necessary, adjust the skid shoes and/or female hitch upper mounting bolts to ensure that the snowblower runs level (see page 13).
5. Start the tractor engine. **With the engine running at idle or a low throttle setting**, engage the snowblower. Once started, operate the blower at **maximum throttle setting**. This is especially important when removing wet, sticky snow. Lower settings will tend to clog the chute.



WARNING: If the chute clogs, disengage the P.T.O., shut off the engine and remove the ignition key before leaving the seat to clear the chute. Do not use your hand to unclog the chute; use a short stick or board.

6. To prevent a freeze-up of the auger and/or fan, allow the snowblower to run for a few minutes after the work is complete.

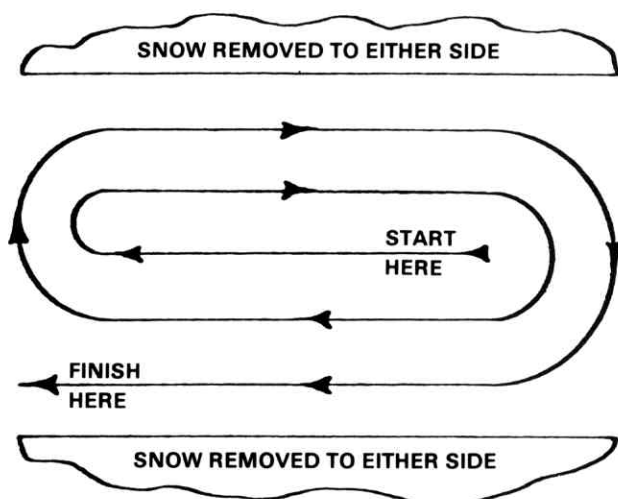
OPERATION (Continued)

GUIDELINES

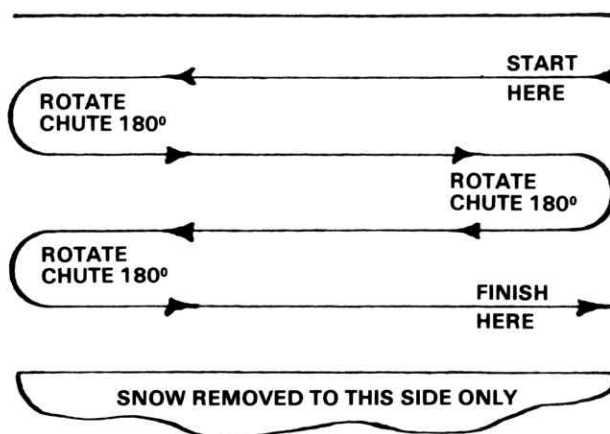
When removing snow, do not use the blower as a dozer blade to push snow through drifts; let the snowblower work its own way. If the tractor speed is too fast, the snowblower may become overloaded and clog. For best results, raise the snowblower and remove a top layer of snow, then make a second pass at a lower level.

One of two basic patterns should be used to thoroughly clean the snow area. Use of these operating patterns will prevent snow piles in unwanted places, and eliminate the need for second passes in all but the deepest drifts.

Where it is possible to throw the snow to the left and right, as on a long driveway, start in the middle. Plow from one end to the other, throwing snow to both sides without changing the direction of the chute.



If the snow can only be thrown to one side, start on the opposite side. At the end of each pass, rotate the chute 180° to maintain the direction of throw to the same area.

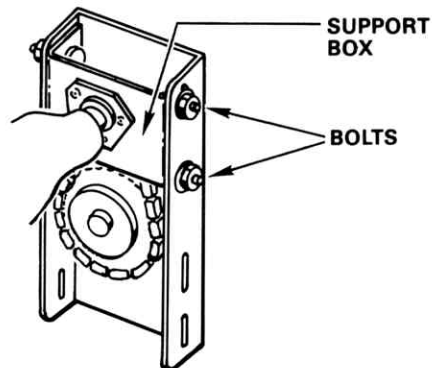


OPERATION (Continued)

ADJUSTMENTS

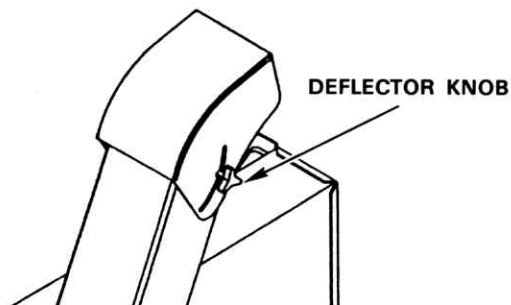
Reduction Chain Slack:

For maximum operating efficiency, keep the reduction chain slack at 1/4" (measured in one span of the chain). Periodically check the chain, and adjust as required: loosen the four bolts. To tighten the chain, raise the drive sprocket support box: lower the box to loosen the chain. Retighten the bolts securely.



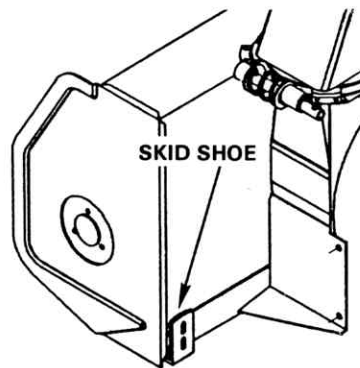
Deflector Angle:

Adjust the chute deflector angle according to the distance the snow must be thrown. (Raise the deflector for longer distances.) Loosen the knobs, adjust the angle and retighten the knobs.



Skid Shoe Height:

When working on level, paved surfaces, adjust the skid shoes to allow 1/16" - 1/8" clearance between the auger box and the surface. On uneven or gravel surfaces, keep the clearance at 1/2" - 1". To raise or lower the shoes, loosen the bolts.



MAINTENANCE



CAUTION: Be sure the snowblower is adequately blocked before working under it when it is raised.

1. Check the shear bolts for tightness at frequent intervals.



CAUTION: To prevent damage to the snowblower, always use special extended shoulder shear bolts on the fan shear assembly and grooved shear bolts on the auger sections.

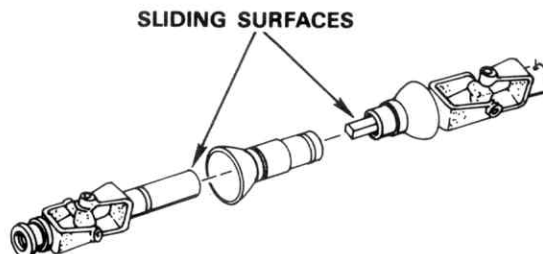
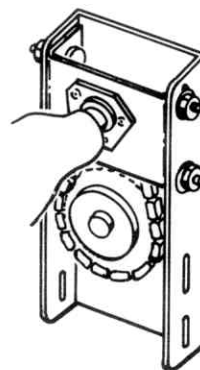
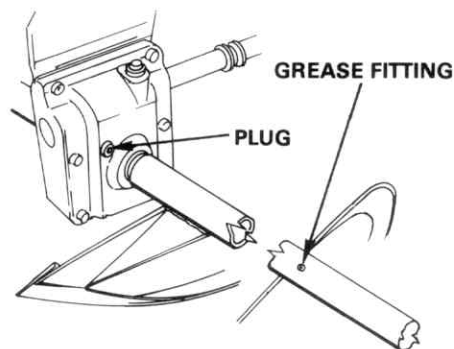
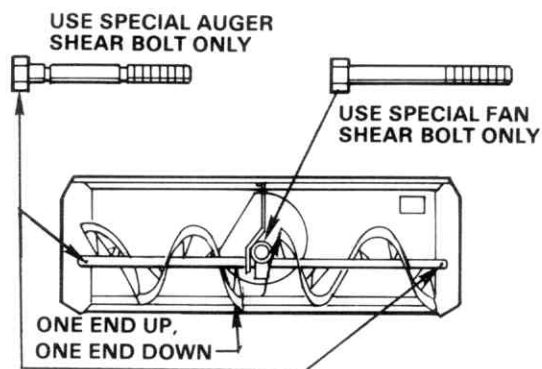
2. Lubrication:

Gearbox: Remove the plug and check the oil level monthly. The oil should reach the plug hole. If the level is low, add AGMA 5 EP (Extreme Pressure) or 90 wt. hypoid gear oil.

Auger Sections: Grease the fitting on each auger section every 24 hours of operation, or once a year.

Reduction Chain: Lubricate with chain lubricant every three operating hours and at the end of each operation.

P.T.O. Drive Shaft: Every eight operating hours, slide the shaft apart and grease the sliding surfaces. Also grease the U-joints.



REMOVING THE SNOWBLOWER/STORAGE

REMOVING THE SNOWBLOWER

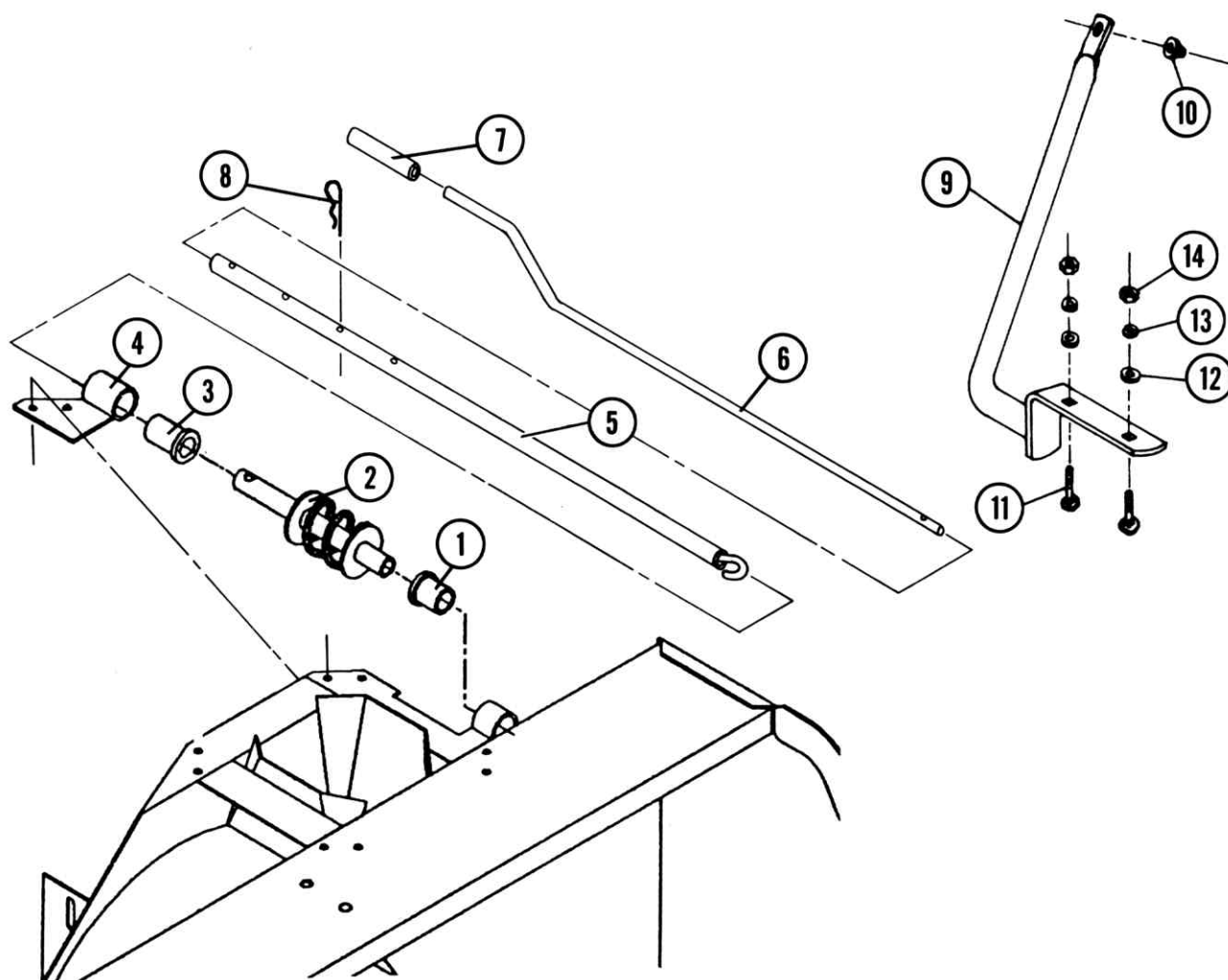
NOTE: Work on a level surface.

1. Lower the unit. Disconnect the drive shaft from the tractor P.T.O. and rest it on the stand provided on the female hitch.
2. Remove the linch pin from the quick-hitch locking device, and move the quick-hitch lever towards the rear.

STORAGE

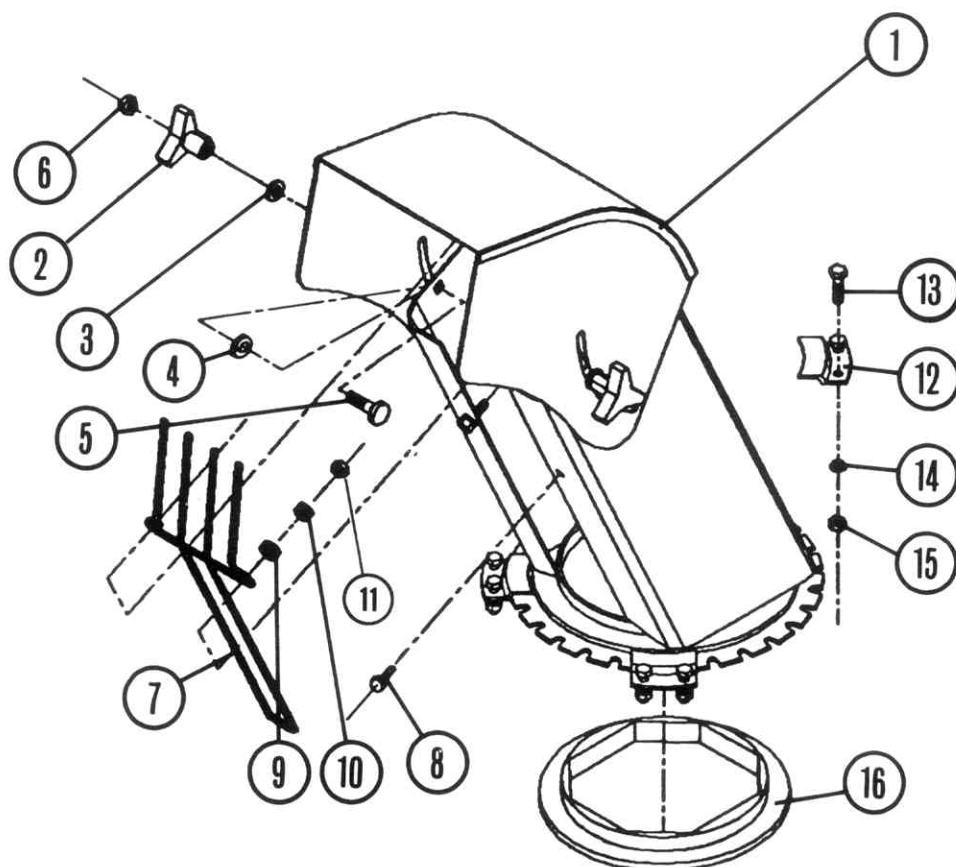
1. Clean the snowblower thoroughly, and repaint any paint-worn surfaces.
2. When the snowblower is dry, oil all moving parts. Apply oil liberally to all surfaces to protect against rust.
3. Replace parts as needed.
4. Lubricate the snowblower as described on the preceeding page and store it in a dry place.

PARTS



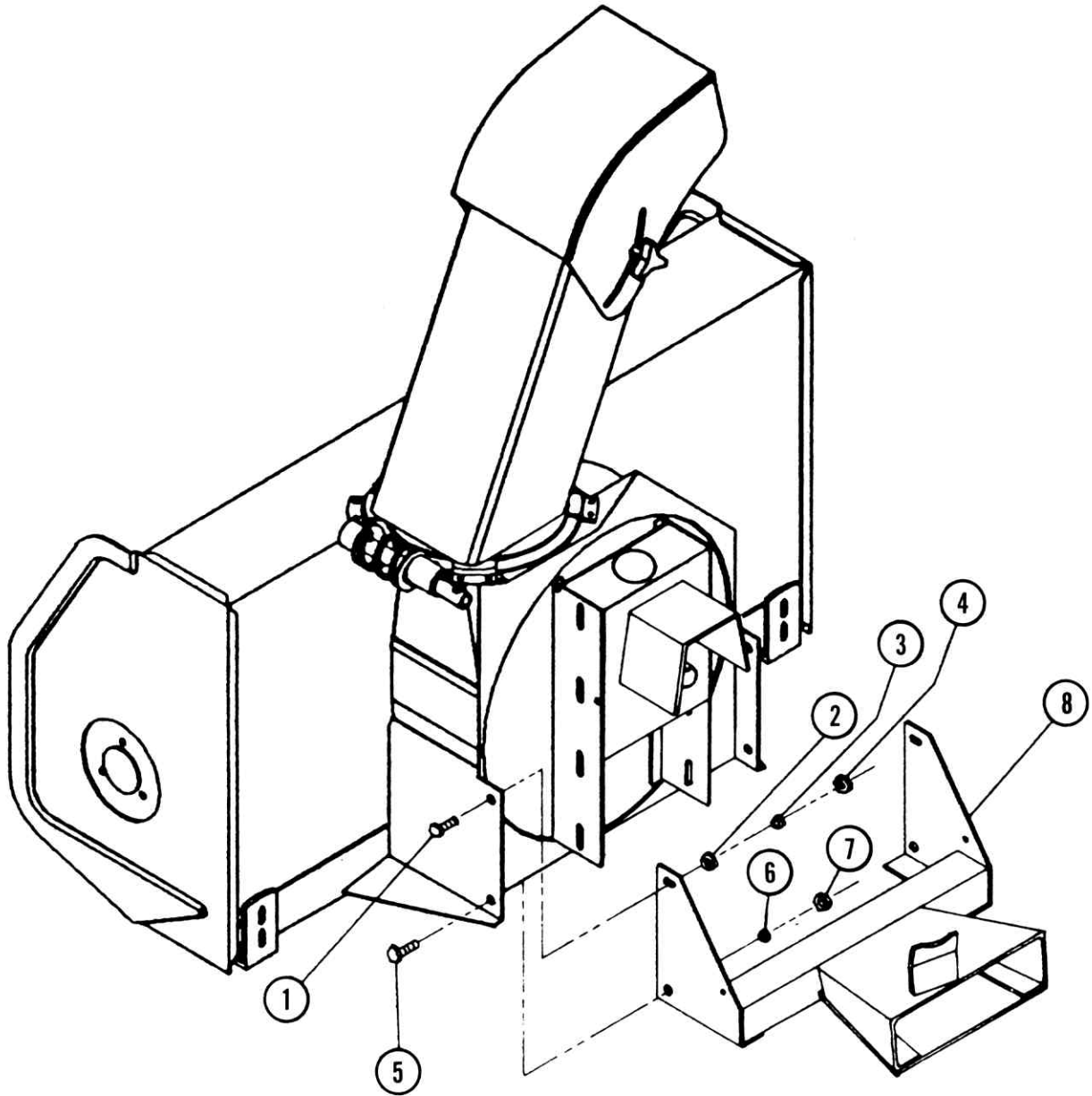
ITEM	DESCRIPTION	QTY.
1	Plastic Bushing (1 5/16" Lg.)	1
2	Rotation Worm (Clockwise)	1
3	Plastic Bushing (1 11/16" Lg.)	1
4	Rotation Worm Support	1
5	Upper Rotation Tube	1
6	Handle	1
7	Grip	1
8	Spring Pin (5/32" Dia. x 2 15/16")	1
9	Rotation Handle Support	1
10	Plastic Grommet	1
11	Carriage Bolt (7/16")	2
12	Flat Washer (7/16")	2
13	Lock Washer (7/16")	2
14	Hex Nut (7/16")	2

PARTS (Continued)



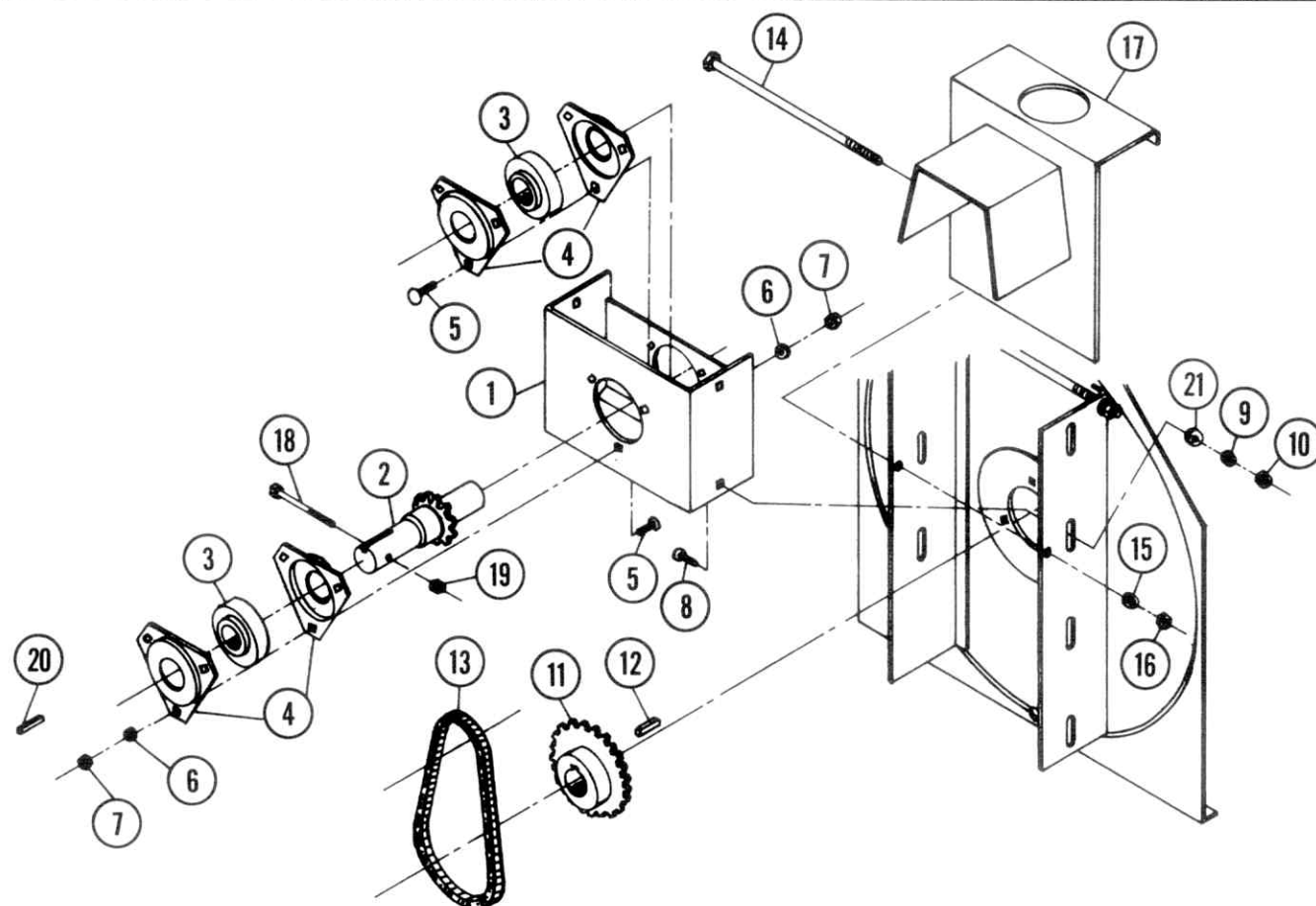
ITEM	DESCRIPTION	QTY.
1	Chute Sub-Assembly	1
2	Knob (5/16" NC)	2
3	Flat Washer (3/8" Dia. Hole)	2
4	Flat Washer (7/16" Dia. Hole)	2
5	Carriage Bolt (5/16" NC x 1 1/2" Lg.)	2
6	Lock Nut (5/16" NC, Nylon)	2
7	Hand Guard	1
8	Hex Bolt (1/4" NC x 3/4" Lg.)	2
9	Flat Washer (5/16" Dia. Hole)	2
10	Lock Washer (1/4")	2
11	Nut (1/4" NC)	2
12	Retaining Plate	4
13	Hex Bolt (1/4" NC x 1/2" Lg.)	6
	Hex Bolt (1/4" NC x 3/4" Lg.)	2
14	Lock Washer (1/4")	8
15	Hex Nut (1/4" NC)	8
16	Collar	1

PARTS (Continued)



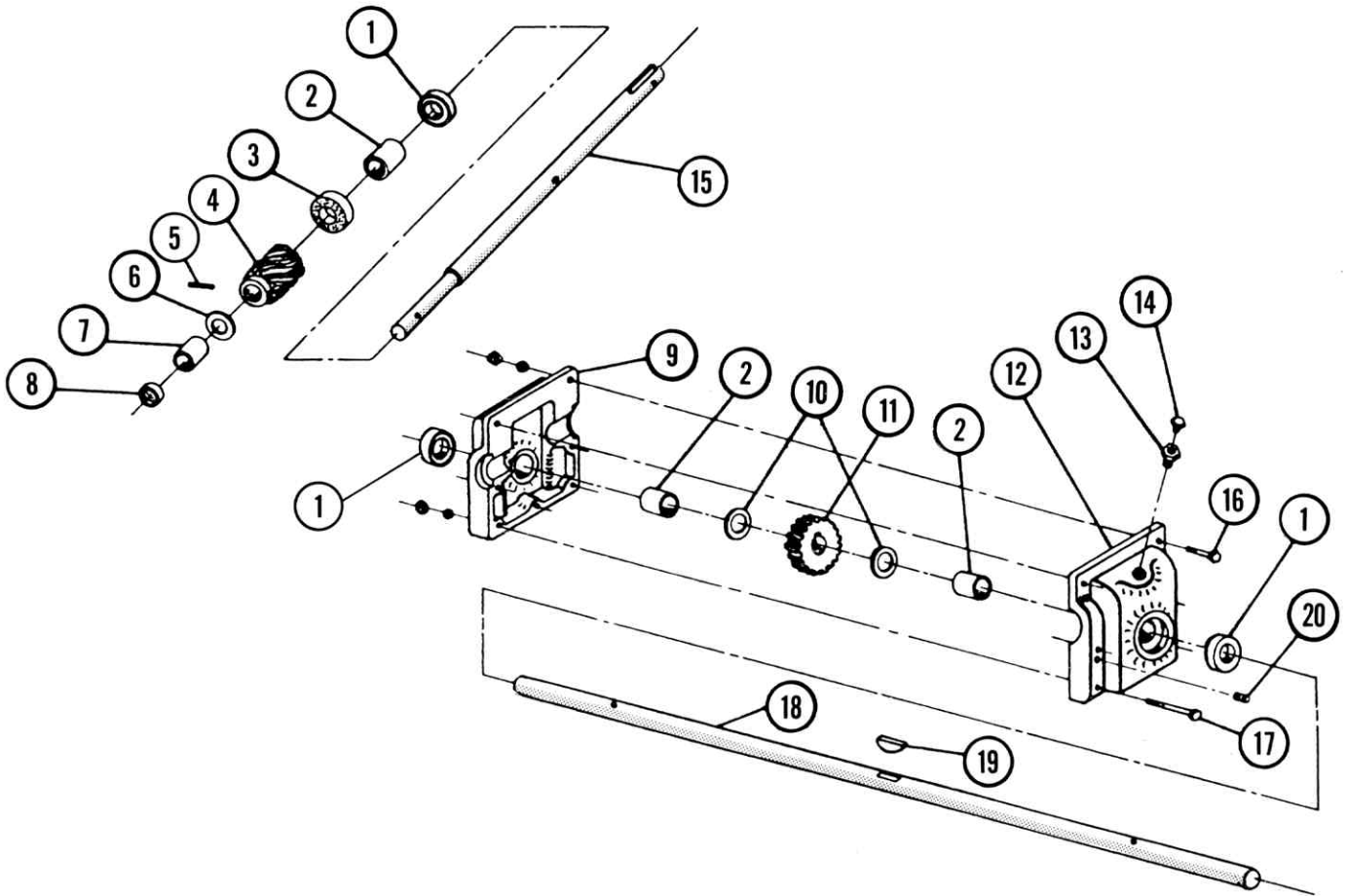
ITEM	DESCRIPTION	QTY.
1	Hex Bolt (3/8" NC x 1" Lg.)	2
2	Flat Washer (7/16" Dia. Hole)	2
3	Lock Washer (3/8")	2
4	Hex Nut (3/8" NC)	2
5	Hex Bolt (1/2" NC x 1" Lg.)	2
6	Lock Washer (1/2")	2
7	Hex Nut (1/2" NC)	2
8	Female Quick-Hitch	1

PARTS (Continued)

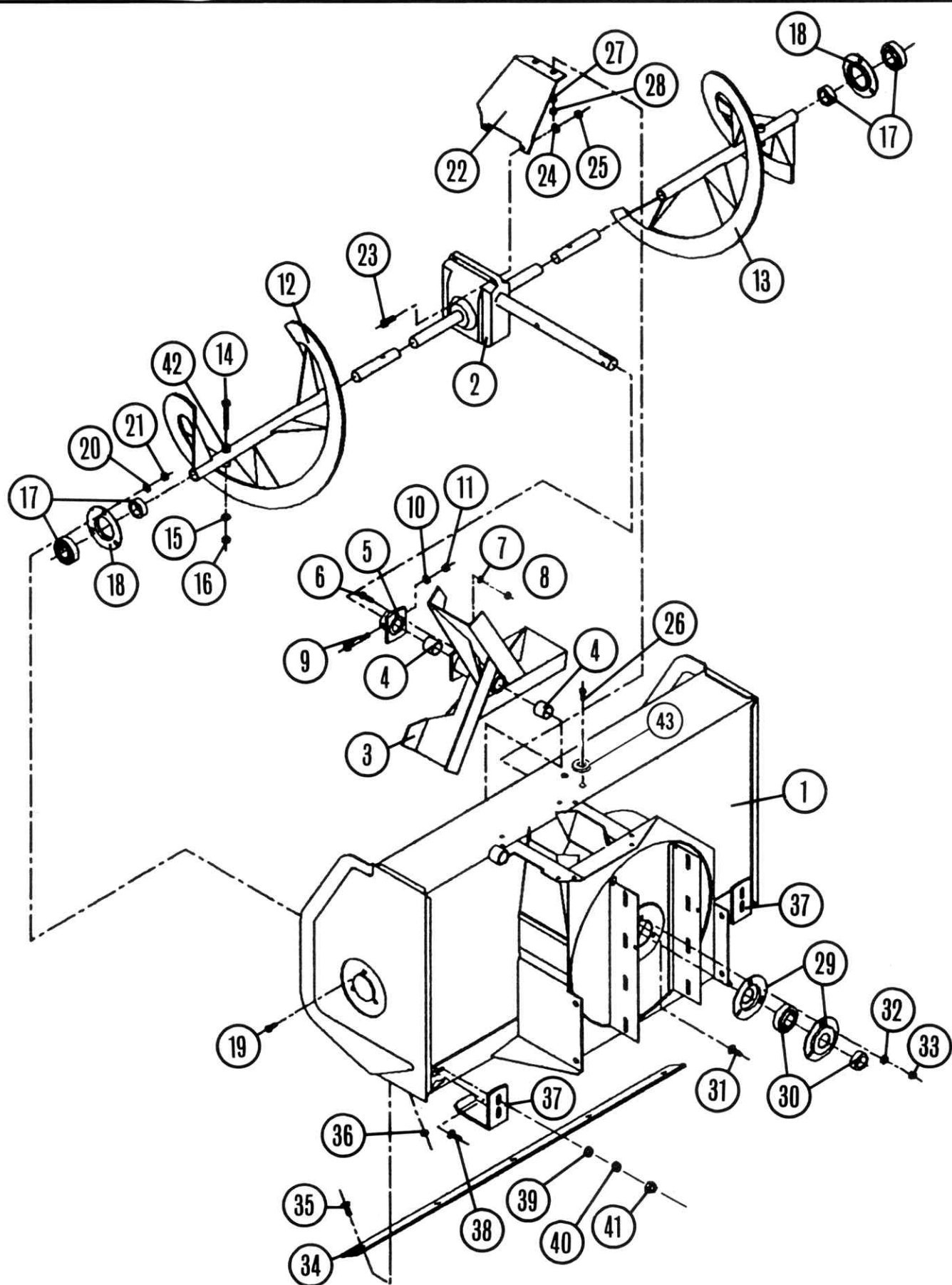


ITEM	DESCRIPTION	QTY.
1	Reduction Box	1
2	Drive Shaft with Sprocket (H40c11)	1
3	Bearing (1" Bore with Locking Screw)	2
4	Flange Bearing	4
5	Carriage Bolt (5/16" NC x 5/8" Lg.)	4
6	Lock Washer (5/16")	6
7	Hex Nut (5/16" NC)	6
8	Carriage Bolt (5/16" NC x 3/4" Lg.)	4
9	Lock Washer (5/16")	4
10	Hex Nut (5/16" NC)	4
11	Sprocket (H40B32)	1
12	Key (1/4" x 1/4" x 1" Lg.)	1
13	Chain, #40 x 37 Links L.L., with Connecting Link (656178)	1
14	Hex Bolt 1/4" NC x 7 1/2" Lg.)	2
15	Lock Washer (1/4")	2
16	Hex Nut (1/4" NC)	2
17	P.T.O. Protector	1
18	Hex Bolt (1/4" NC x 2" Lg.)	1
19	Lock Nut (1/4" NC, Nylon)	1
20	Key (1/4" x 1/4" x 1 1/4")	1
21	Flat Washer (3/8")	4

PARTS (Continued)



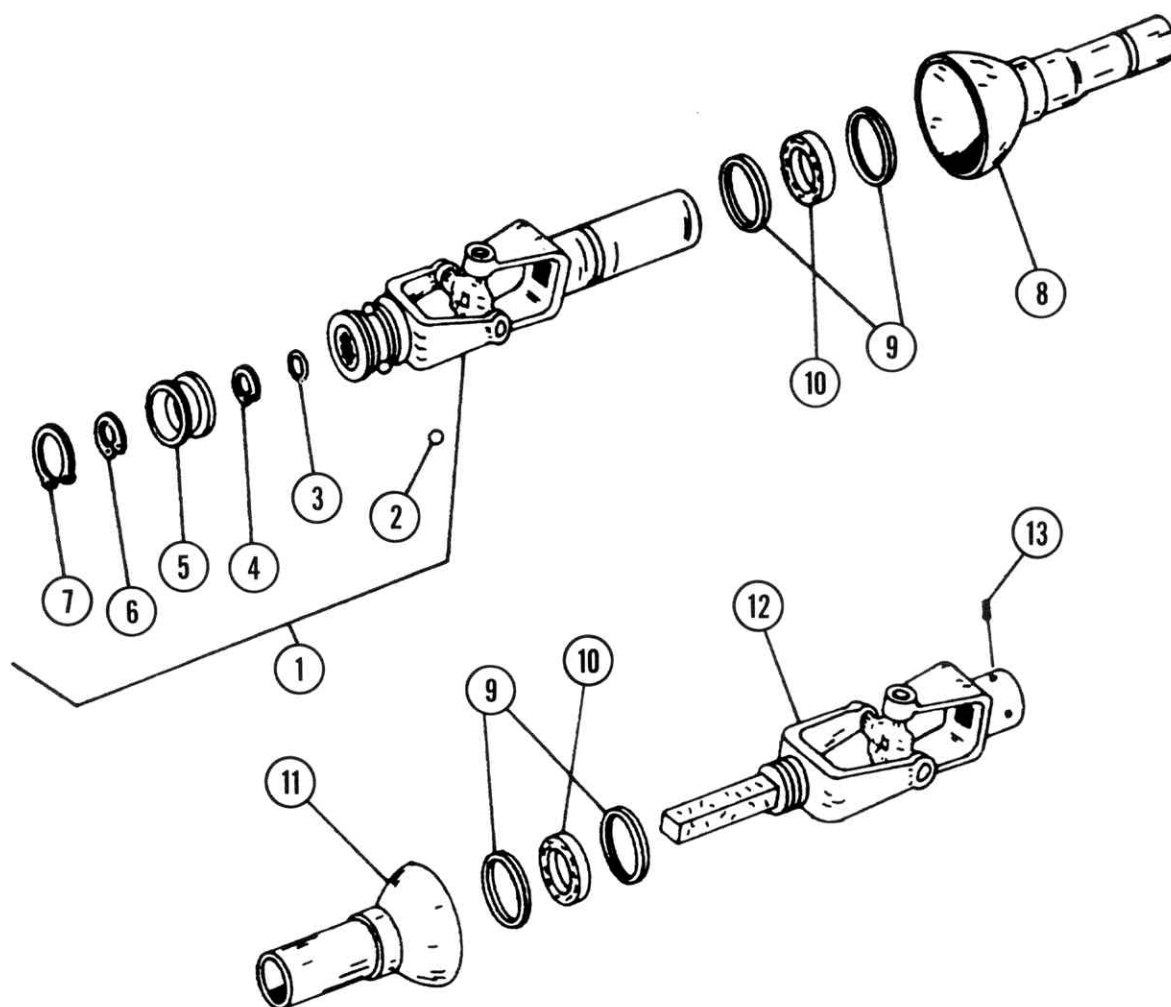
ITEM	DESCRIPTION	QTY.
1	Oil Seal (GR 9818)	3
2	Bushing (1" Dia. Int. x 1 1/4" Dia. Ext. x 1" Lg.)	3
3	Bearing (SKF51105)	1
4	Worm (R.H. Rotation)	1
5	Pin (1/4" Dia x 1 1/2" Lg.)	1
6	Washer (1 3/8" Dia.)	1
7	Bushing (7/8" Dia. Int. x 1 1/8" Ext. x 1" Lg.)	1
8	Input Cap	1
9	Cover, R.H.	1
10	Washer (1 1/2" Dia.)	2
11	Brass Gear #65 (Clockwise Rotation)	1
12	Cover, L.H.	1
13	Coupling (3/8" npt Male x 1/8" Female)	1
14	Breather (1/8" npt)	1
15	Input Shaft	1
16	Hex Bolt (5/16" x 1 1/4" Lg., GR.5, with Lock Washer and Nut)	2
17	Hex Bolt (5/16" NC x 2 1/2" Lg., GR.5, with Lock Washer and Nut)	4
18	Output Shaft	1
19	Woodruff Key	1
20	Level Plug (1/8" npt)	1



PARTS (Continued)

ITEM	DESCRIPTION	QTY.
1	Frame	1
2	Worm Gear Assembly (Clockwise)	1
3	Fan Assembly	1
4	Bushing	2
5	Fan Adapter Shear Plate	1
6	Fan Shear Bolt	1
7	Lock Washer (1/4")	1
8	Hex Nut (1/4" NC)	1
9	Hex Bolt (5/16" NC x 2", GR.5)	1
10	Lock Washer (5/16")	1
11	Hex Nut (5/16" NC)	1
12	Auger L.H.	1
13	Auger R.H.	1
14	Auger Shear Bolt	2
15	Lock Washer (5/16")	2
16	Hex Nut (5/16" NC)	2
17	Bearing with Locking Screw	2
18	Bearing Flange	2
19	Hex Bolt (5/16" NC x 3/4")	6
20	Lock Washer (5/16")	6
21	Hex Nut (5/16" NC)	6
22	Worm Gear Support Bracket	1
23	Hex Bolt (5/16" NC x 1 1/4")	2
24	Lock Washer (5/16")	2
25	Hex Nut (5/16" NC)	2
26	Hex Bolt (5/16" NC x 3/4")	2
27	Lock Washer (5/16")	2
28	Hex Nut (5/16" NC)	2
29	Bearing Flange	2
30	Bearing with Locking Collar	1
31	Carriage Bolt (5/16" NC x 3/4")	3
32	Lock Washer (5/16")	3
33	Hex Nut (5/16" NC)	3
34	Cutting Edge	1
35	Carriage Bolt (5/16" x 3/4")	6
36	Stover Nut (5/16" NC)	6
37	Skid Shoes	2
38	Carriage Bolt (5/16" NC x 1")	4
39	Flat Washer (3/8" Dia. Hole)	4
40	Lock Washer (5/16")	4
41	Hex Nut (5/16" NC)	4
42	Shear Bolt Bushing	4
43	Flat Washer (3/8")	2

PARTS (Continued)



ITEM	DESCRIPTION	QTY.
1	Female Shaft Ass'y and Quick Disconnect Yoke	1
2	Stainless Ball (3/8")	3
3	Ring	1
4	Spring Retaining Ring	1
5	Collar	1
6	Internal Retaining Ring	1
7	External Retaining Ring	1
8	Inner Shield	1
9	Bearing Retainer	2
10	Nylon Bearing	2
11	Outer Shield	1
12	Male Shaft Ass'y and Yoke	1
13	Allen Set Screw (3/8" NC x 3/8")	1

HONDA**Power****Equipment**

Distributor's Limited Warranty

HONDA POWER EQUIPMENT

This warranty is limited to Honda power equipment products (other than general purpose engines) distributed by American Honda Motor Co., Inc., 100 W. Alondra Blvd., Gardena, California 90248-2702.

PRODUCTS COVERED BY THIS WARRANTY:

Commercial-model Lawn Mowers
Homeowner-model Lawn Mowers
Riding Mowers
Lawn Tractors
Utility Tractors
Power Carriers
Generators
Generator/Welders
Tillers
Snowblowers/Snowthrowers
Pumps
Outboard Motors
Accessories
Attachments
Apparel/Replacement Parts

LENGTH OF WARRANTY:

(from date of purchase)

NONCOMMERCIAL USE	COMMERCIAL/RENTAL USE
12 months	12 months
12 months	3 months
12 months	3 months
12 months	3 months
12 months	3 months
12 months	3 months
12 months	3 months
12 months	3 months
12 months	3 months
12 months	3 months
12 months	3 months
12 months	3 months
12 months	3 months
12 months	3 months
3 months	3 months

NOTE: This warranty does not apply to Honda general purpose engines; they are covered by a different warranty.

TO QUALIFY FOR THIS WARRANTY:

1. The product must be purchased from American Honda or dealers authorized by American Honda to sell those products within the United States, Puerto Rico, and the U.S. Virgin Islands.
2. You must be the first retail purchaser. This warranty is not transferable to subsequent owners.

WHAT AMERICAN HONDA WILL REPAIR OR REPLACE UNDER WARRANTY:

Except as described under "EXCLUSIONS," American Honda will repair or replace, at its option, any power equipment product that is proven to be defective in material or workmanship under normal use during the applicable warranty time period. Anything replaced under warranty becomes the property of American Honda Motor Co., Inc.

- Accessories, attachments, and replacement parts—
Except as described under "EXCLUSIONS," accessories, attachments, and replacement parts installed by a dealer who is authorized by American Honda to sell them will be repaired or replaced under warranty without charge for parts or labor. If installed by anyone else, accessories, attachments, and replacement parts will be repaired or replaced under warranty without charge for parts, but any labor charges will be the responsibility of the purchaser.
- All other power equipment products—
Except as described under "EXCLUSIONS," all other power equipment products will be repaired or replaced under warranty without charge for parts or labor.

TO OBTAIN WARRANTY SERVICE:

You must take the Honda power equipment product and proof of purchase, at your expense, to any Honda power equipment dealer within the United States, Puerto Rico, or the U.S. Virgin Islands who is authorized to sell that product, during the dealer's normal business hours. If you are unable to obtain warranty service, or are dissatisfied with the warranty service you receive, take the following steps: First, contact the owner of the dealership involved; normally this should resolve the problem. However, if you should require further assistance, write or call the Power Equipment Customer Relations Department of American Honda Motor Co., Inc.

American Honda Motor Co., Inc.
Power Equipment Customer Relations Department
P.O. Box 50
Gardena, California 90247-0805
Telephone: (213) 604-2400

EXCLUSIONS:

THIS WARRANTY DOES NOT EXTEND TO PRODUCTS AFFECTED OR DAMAGED BY ACCIDENT AND/OR COLLISION, NORMAL WEAR, USE IN AN APPLICATION FOR WHICH THE PRODUCT WAS NOT DESIGNED OR ANY OTHER MISUSE, NEGLECT, INCORPORATION OR USE OF UNSUITABLE ATTACHMENTS OR PARTS, UNAUTHORIZED ALTERATION, OR IMPROPER INSTALLATION. THIS WARRANTY DOES NOT APPLY TO ANY OUTBOARD MOTOR THAT HAS BEEN USED BY A DEALER AS A DEMONSTRATOR. THE AUGER AND PADDLE ASSEMBLIES OF SNOWTHROWERS AND SNOWBLOWERS ARE SPECIFICALLY NOT WARRANTED AGAINST DAMAGE, INCLUDING, BUT NOT LIMITED TO, ABRASIVE DAMAGE.

DISCLAIMER OF CONSEQUENTIAL DAMAGE AND LIMITATION OF IMPLIED WARRANTIES:

AMERICAN HONDA DISCLAIMS ANY RESPONSIBILITY FOR LOSS OF TIME OR USE OF THE PRODUCT OR THE ITEM IN WHICH THE PRODUCT IS INSTALLED, TRANSPORTATION, COMMERCIAL LOSS, OR ANY OTHER INCIDENTAL OR CONSEQUENTIAL DAMAGE. ANY IMPLIED WARRANTIES ARE LIMITED TO THE DURATION OF THIS WRITTEN WARRANTY. Some states do not allow limitations on how long an implied warranty lasts and/or do not allow the exclusion or limitation of incidental or consequential damages, so the above exclusions and limitations may not apply to you.

This warranty gives you specific legal rights, and you may also have other rights which vary from state to state.

AMERICAN HONDA MOTOR CO., INC.
January, 1987

