

2021 ACCESSORY CATALOG

ABOUT THIS CATALOG

Welcome to the 2021 edition of the **Honda Power Equipment Accessory Catalog**. This publication makes it easy to order accessories, kits, and other options for Honda Power Equipment products. We've organized this catalog into product areas, such as tillers and generators.

If you subscribe to paper publications, information regarding new accessories, in the form of *Accessory Bulletins*, will be mailed to you throughout the year. Otherwise, accessory bulletins are released via the iN (Interactive Network) and **DIRECT-TO-TECH** emails. You can also find the catalog on PETE, PE Tech Express, at pete.honda.com.

Consumers can find accessory information on powerequipment.honda.com.

AVAILABLE ON THE iN AND PETE

The **most up-to-date** catalog information is available on the iN and PE Tech Express. On the iN select PARTS>Accessories or SERVICE>Accessories>.

PURCHASING EXTRA COPIES OF THIS CATALOG

Additional copies of the Accessory Catalog can be ordered through PE Service Publications. On the iN select eMall>PE Service Publications. The reorder number for this catalog is TO500.

ORDERING FROM THE PARTS DIVISION

Items in this catalog are available from the Parts Division. Use the iN to place your parts order.

QUESTIONS?

Dealers may contact our Parts Division staff at 800-222-7693, option 3,1.

Parts pricing, part numbers, and parts availability subject to change without notice.

TABLE OF CONTENTS

LAWN MOWERS	1
TILLERS	2
TRIMMERS	3
SNOW BLOWERS	4
GENERATORS	5
WATER PUMPS	6
OILS, CHEMICALS, PAINT, & FUEL CANS	7
PROMOTIONS & SPECIAL ORDER PROGRAMS	8
ACCESSORY RETAIL PRICE LIST	9
WARRANTY STATEMENTS	10

2021 ACCESSORY CATALOG

THIS PAGE INTENTIONALLY LEFT BLANK.

LAWN MOWERS

Bulk Starter Rope	1-2
Grass Bag Kits & Parts	1-3
Miimo House	1-4
Miscellaneous Kits & Parts	1-5
HRC216K2, HRC216K3 Single Blade Spacer Kit	1-5
HRS216 Twin-Blade Conversion	1-5
Side Discharge Chute.	1-5
Lawn Mower Cover.	1-5
Deck Guard Kits	1-5
Leaf Shredder.	1-5
Adjustable Smart Drive Kit	1-6
Spark Arrestor Kits	1-6
Battery Charger Assembly	1-6
Battery Float Charger Kit	1-7
Charger Harness Kit.	1-7

LAWN MOWERS

Bulk Starter Rope

#3.5 x 200'	0.109 in (diameter)	08535-ZG921-11
#4 x 200'	0.122 in (diameter)	08540-ZG921-11
#4.5 x 200'	0.140 in (diameter)	08545-ZG921-11
#5 x 200'	0.156 in (diameter)	08550-ZG921-11
#5.5 x 200'	0.170 in (diameter)	08555-ZG921-11
#6 x 200'	0.187 in (diameter)	08560-ZG921-11
#7 x 200'	0.210 in (diameter)	08570-ZG921-11



LAWN MOWERS

Grass Bag Kits & Parts

When you want the best possible lawn appearance, you just can't beat a grass bag. Clippings are blown into the ventilated bag for easy handling and disposal. Build your own kit with the following parts.

STANDARD GRASS BAGS

HRC216K2, HRC216K3 GRASS BAG KIT (COMPLETE KIT)

Complete kit	06813-VK6-000
--------------	---------------

HRN216

Frame	81330-VR8-N00	Fabric grass bag	81320-VR8-N00
-------	---------------	------------------	---------------

HRR216K0~K2, HRT216K0~K2, HRZ216

Frame comp, bag	81330-VG4-010	Fabric comp, grass bag	81320-VG4-010
-----------------	---------------	------------------------	---------------

HRR216K3~K7

Frame	81330-VG4-010	Fabric grass bag	81320-VL0-B10
-------	---------------	------------------	---------------

HRR216K8~K11

Frame	81330-VL0-P00	Fabric grass bag	81320-VL0-P00
-------	---------------	------------------	---------------

HRX217

Frame (collapsible)	81330-VH7-D01	Fabric comp, grass bag	81320-VH7-D00
---------------------	---------------	------------------------	---------------

OPTIONAL GRASS BAGS

HRX217K0 and Later LOW-DUST GRASS BAG KIT (COMPLETE KIT)

Complete kit*	04813-VH7-K50	Fabric grass bag**	81320-VH7-K51
---------------	---------------	--------------------	---------------

*This kit includes the low-dust fabric bag **and** compatible frame.

The low-dust fabric bag **is not compatible with the factory original grass bag frame.



LAWN MOWERS

Miimo House

The Miimo House was designed to help protect Miimo and the charging station from rain and direct sunlight.

The Miimo House can be set in two positions, raised and lowered. The raised position allows access to Miimo's control panel while Miimo is parked in the docking station. The lowered position protects Miimo from the elements during recharging, or when Miimo is not scheduled to mow.

Miimo House HRM310K1/K2, HRM520K1/K2	06800-VP7-000
--	---------------



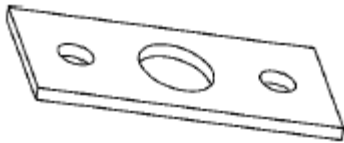
LAWN MOWERS

Miscellaneous Kits & Parts

HRC216K2, HRC216K3 Single Blade Spacer Kit

For single blade operation, install this spacer in place of the upper blade. **Not for use on HRN/HRR/HRX twin-blade models.**

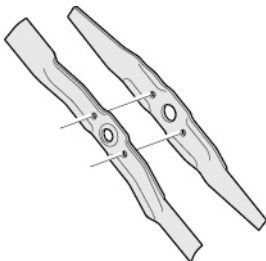
Single Blade Spacer Kit	06725-VK6-000
-------------------------	---------------



HRS216 Twin-Blade Conversion

Convert a single blade HRS216 to a twin-blade configuration for maximum cutting performance.

Upper Blade	72531-VE2-020
Lower Blade	72511-VE1-020



Side Discharge Chute

Convert a rear-bag lawn mower to side-discharge. This is a simple, 90-degree elbow that slips onto the rear of the unit and is held in place by the rear guard. The chute is made of tough polyethylene. **Not for use on HRR216K8~K11, HRX217, or HRN216 mowers.**

HRC216K2, HRC216K3	06814-VK6-000
HRR216K0~K7, HRT216, HRZ216	06814-VG4-010



Lawn Mower Cover

Protect your walk behind (21" deck) lawn mower with a custom fitted waterproof, breathable silver-colored polyester cover. Fits all lawn mowers.

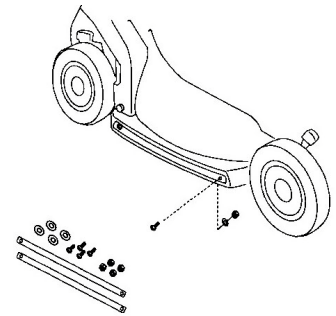
21" deck, red logo	08P59-VE2-000AH
21" deck, black logo	08P59-VE2-010AH



Deck Guard Kits

Honda mower decks are built tough, but you can add these all-steel guards to protect the sides of the deck from wear. These guards are standard equipment on walk-behind commercial mowers.

HR215K0, HR215K1 (2 guards included)	06761-VA3-690
HRX217 (2 stainless steel guards included)	06761-VH7-000AH



Leaf Shredder

Use this special shredder to chop up leaves. It helps to better pack the grass bag, so it won't have to be emptied as often. **Not for use on HRR216K9~K11, HRX217, or HRN216 models.**



HRB215, HRB216, HRB217, HRM215	81510-VE2-000
HRR216 (K0~K8), HRT216, HRZ216	81560-VG4-000

LAWN MOWERS

Miscellaneous Kits & Parts (cont.)

Adjustable Smart Drive Kit

This optional kit is for use with HRR216K3VXA, HRR216K4VXA, and HRX217K1VKA lawn mowers only. The parts in this kit are standard equipment on later models. Move the Smart Drive control up or down into the most comfortable position for the operator. The multi-position adjuster can be moved to five different positions.

Adjustable Smart Drive Kit	06554-VH7-305
----------------------------	---------------



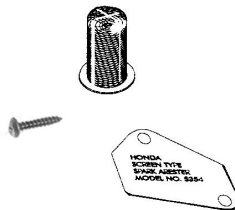
Spark Arrestor Kits

To help reduce fire hazards when mowing in extremely dry conditions, install this kit. A spark arrestor is mandatory on any unit operated in a U.S. National Forest.

HR21, HR21K1, HR21K2, HRA21	06180-888-505
HR194, HR195, HR214, HR215, HR216, HRA214, HRA215, HRA216, HRB215, HRC215, HRC216, HRM195, HRM215	06180-ZE6-820

HRB216, HRB217, HRR216, HRS216, HRT216, HRZ216, HRX217

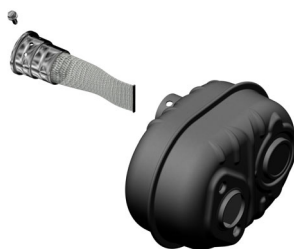
Arrestor, spark	18350-ZL8-000
Plate	18356-ZL8-000
Screw, tapping (4 x 6 mm)	90055-ZE1-000



HRX217(K6), HRN216

Muffler Assy (Arrestor)	18300-Z9L-800
-------------------------	---------------

Spark Arrestor Equipped Muffler with ID mark



Battery Charger Assembly

Electric start lawn mowers are now equipped with automatic on-board battery charging. However, an optional AC charger can be used to keep the battery charged during the off-season or to fully charge the battery at the start of the season. Note: The charger is not designed to be left connected for more than 24 hours and will not fit earlier model lawn mowers.

Note: Not for sale in California or Oregon.

HRR216K9VLA (MZCG-8670001~9349370) HRX217K4HZA (all serial numbers) HRX217K4VLA (all serial numbers) HRX217K5HZA (MAGA-2370001~2999999) HRX217K5VLA (MAGA-2370001~2999999)	31570-VL0-W01
--	---------------



LAWN MOWERS

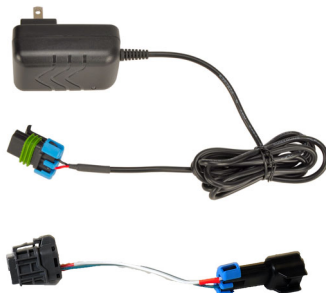
Miscellaneous Kits & Parts (cont.)

Battery Float Charger Kit

The accessory float charger can be used to supplement the on-board charging system and features a 'float mode,' allowing it to be left connected continuously between uses or during long-term storage. This maximizes battery life and ensures the battery is always fully charged and ready when your customer is ready to mow.

Note: Float charger can be used on earlier units below the serial number ranges listed below if a harness kit (06320-VH7-S00) is installed.

HRN216VLA (MANA-1000001~subsequent) HRR216K11VLA (MZCG-1660001~1999999) HRR216K10VLA (MZCG-1140001~1660000) HRR216K9VLA (MZCG-9349371~9999999) (MZCG-1000001~1140000) HRX217K6VLA (MAMA-1000001~subsequent) HRX217K6HZA (MAMA-1000001~subsequent) HRX217K5VLA (MAGA-2417295~subsequent) HRX217K5HZA (MAGA-2417295~subsequent)	06320-VH7-UA2
---	---------------

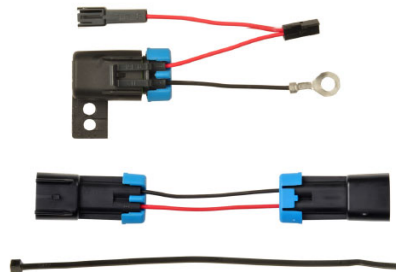


Charger Harness Kit

The charger harness kit is available for earlier models that were not equipped with a charger connection. The kit equips the lawn mower with a charge connector, allowing the charger to be quickly connected without having to remove the battery from the lawn mower.

Note: Does not include required Battery Float Charger Kit. (part # 06320-VH7-UA2)

HRR216K9VLA (MZCG-8670001~9349370) HRX217K4HZA (MZCG-2200001~2369999) HRX217K4VLA (MZCG-2200001~2369999) HRX217K5HZA (MAGA-2370001~2417294) HRX217K5VLA (MAGA-2370001~2417294)	06320-VH7-S00
---	---------------



LAWN MOWERS

THIS PAGE INTENTIONALLY LEFT BLANK.