

# EMISSION RECALL NOTICE

## HSS724A • HSS928A • HSS1332A Snow Blowers CALIFORNIA EMISSION NON-COMPLIANCE

Check below to see if your snow blower is affected by this recall.  
This emission recall only applies to units sold or used in California.



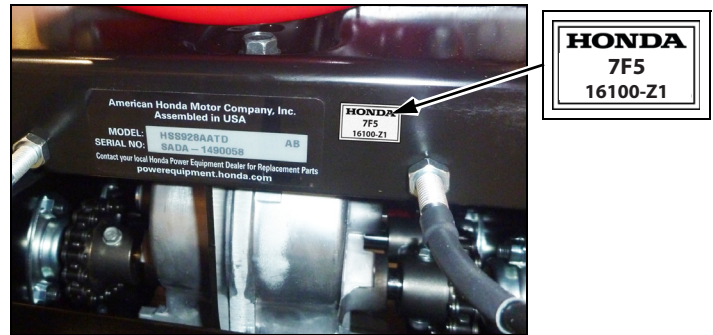
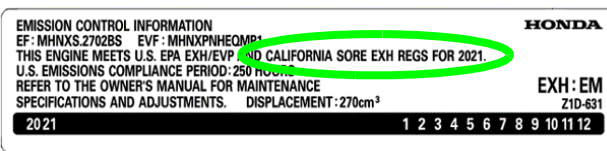
MODEL	START SERIAL NUMBER	END SERIAL NUMBER
HSS724A	SABA-1490001	SABA-1999999
HSS928A	SADA-1490001	SADA-1999999
HSS1332A	SAFA-1490001	SAFA-1999999

Units previously repaired are no longer part of this recall. They can be identified by a new emission label on the recoil starter/fan cover and a Honda “7F5” label located near the serial number label.

### INCORRECT LABEL



### CORRECT LABEL



### What is the problem?

The snow blower's engine emission control system is not compliant with California Air Resources Board (CARB) exhaust regulations for units manufactured in the year 2020 or later. Snow blowers manufactured after January 1, 2020 were not intended to be available or used in California. However, some units were inadvertently sold in, or for use in, California. There is no safety impact to the end-user.

### What should you do?

Check your snow blower's model and serial number to determine if it is within the affected serial number range. If your snow blower is within the affected range and you own or operate the snow blower in California, stop using your snow blower and contact a Honda Power Equipment service dealer near you to make an appointment to have the snow blower repaired. Honda will repair or replace a non-compliant snow blower (depending on the model) that is operated in California. Also:

- If your snow blower was registered with American Honda and is affected, you will receive a letter.
- If your snow blower was not registered with American Honda, contact your Honda Power Equipment servicing dealer.

If you need assistance locating a servicing dealer, please visit our website: [powerequipment.honda.com](http://powerequipment.honda.com), or call us at our recall line (888) 888-3139, option 4.

This recall is being conducted in cooperation with the California Air Resources Board (CARB).