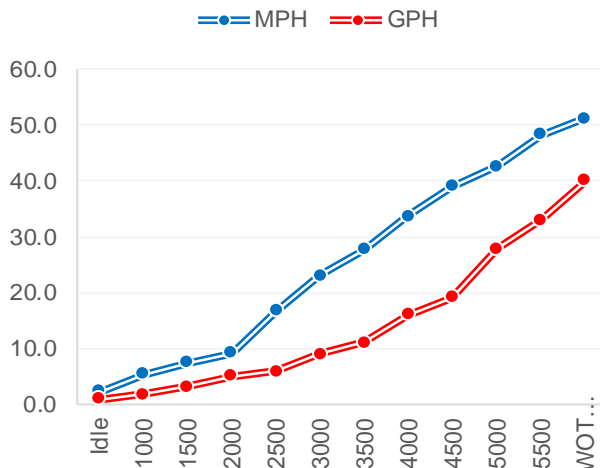




Performance Data

RPM	MPH	GPH	MPG
Idle	2.30	1.00	2.30
1000	5.40	1.82	2.97
1500	7.48	3.20	2.34
2000	9.09	5.05	1.80
2500	16.69	5.92	2.82
3000	23.02	8.92	2.58
3500	27.73	11.07	2.50
4000	33.72	15.96	2.11
4500	39.13	19.07	2.05
5000	42.58	27.96	1.52
5500	48.33	33.00	1.46
WOT 6000	51.20	40.00	1.28

Accel 0-20 MPH
Time to Plane



Boat

Boat Manufacture	Fluid
Website	
Model	880
Length	28'9"
Beam	9'7"
Dry Weight (lbs)	3800
Max HP	450
Fuel Cap. (gal)	158
Hull Type	Deep V

Engine

Model	BF225 (X)
Horsepower	225
Displacement	3.5L V6 VTEC
Weight (lbs)	599
Gear Ratio	1.86
Mounting Hole	#2
Prop Material	Stainless Steel
Diameter / Pitch	15.5 X 17 X 3
Honda Part #	58133-ZY3-A17LX 58133-ZY3-B17LX

Twin

Test Conditions

No. of People	3
Fuel Load	80 Gallons
Air Temperature	82 F
Test Conditions	Calm
Elevation	Sea Level
Wind Velocity	5-8 mph
Test Date	2/14/2018

Data presented should be used as a guide. Actual results may vary due to changes in weather, water conditions, elevation and load. Honda reserves the right to change the specifications on this report or its engines without notice.

TRUE
5
YEAR
LIMITED
WARRANTY

The best warranty in the business.

Only Honda gives you a full, five years, non-declining warranty.

No strings. No catches. It's that simple.

marine.honda.com

© 2018 American Honda Motor Co., Inc.