

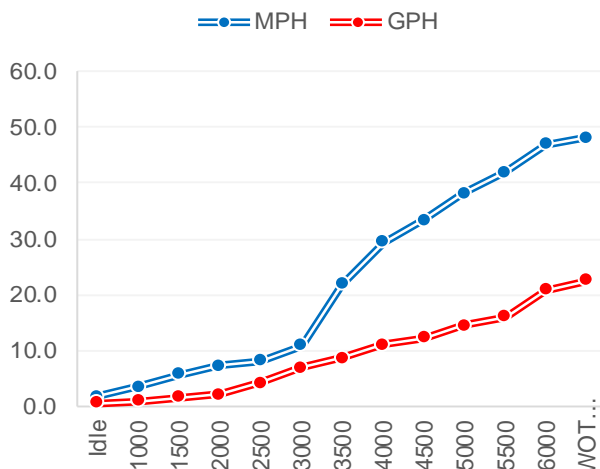


Performance Data

RPM	MPH	GPH	MPG
Idle	1.80	0.50	3.60
1000	3.50	0.90	3.89
1500	5.80	1.60	3.63
2000	7.20	2.20	3.27
2500	8.10	4.20	1.93
3000	10.90	6.90	1.58
3500	21.90	8.70	2.52
4000	29.40	11.10	2.65
4500	33.30	12.20	2.73
5000	38.20	14.50	2.63
5500	42.00	16.00	2.63
6000	46.9	20.8	2.25
WOT 6190	48.1	22.6	2.13

Accel 0-20 MPH

Time to Plane



Boat

Boat Manufacture	Crevalle
Website	www.crevalleboats.com/
Model	24 Bay
Length	23.6
Beam	102"
Dry Weight (lbs)	5000
Max HP	250
Fuel Cap. (gal)	71
Hull Type	Deep V

Engine

Model	BF250 (X)
Horsepower	250
Displacement	3.6 V6 VTEC
Weight (lbs)	600
Gear Ratio	2
Mounting Hole	#2
Prop Material	Stainless Steel
Diameter / Pitch	14.75 X 18 X 3
Honda Part #	58133-ZY3-A19HR

Test Conditions

No. of People	2
Fuel Load	71 gal
Air Temperature	89
Test Conditions	Calm
Elevation	S/L
Wind Velocity	1-6 mph
Test Date	1/29/2019

Data presented should be used as a guide. Actual results may vary due to changes in weather, water conditions, elevation and load. Honda reserves the right to change the specifications on this report or its engines without notice.

TRUE
5
YEAR
LIMITED
WARRANTY

The best warranty in the business.
Only Honda gives you a full, five years, non-declining warranty.
No strings. No catches. It's that simple.



marine.honda.com

© 2019 American Honda Motor Co., Inc.