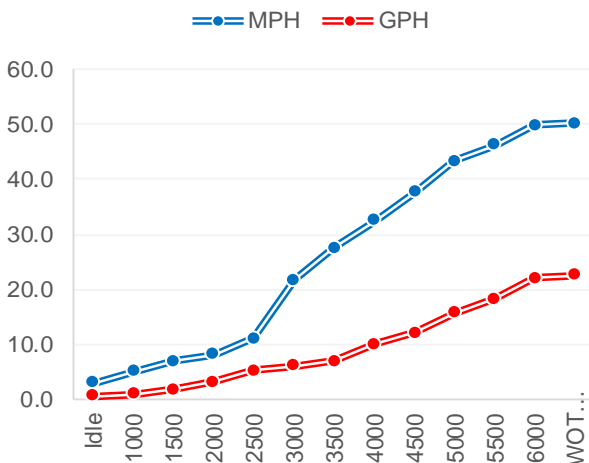




Performance Data

RPM	MPH	GPH	MPG
Idle	3.00	0.50	6.00
1000	5.10	1.00	5.10
1500	6.90	1.80	3.83
2000	8.20	3.20	2.56
2500	11.00	5.20	2.12
3000	21.70	6.00	3.62
3500	27.50	7.00	3.93
4000	32.50	10.00	3.25
4500	37.60	12.10	3.11
5000	43.40	15.70	2.76
5500	46.20	18.30	2.52
6000	49.90	22.10	2.26
WOT 6140	50.30	22.50	2.24
Accel 0-20 MPH			4.9
Time to Plane			



Boat

Boat Manufacture	Crevalle
Website	www.crevalleboats.com
Model	24 Bay
Length	23.6
Beam	102"
Dry Weight (lbs)	4200
Max HP	250
Fuel Cap. (gal)	71

Engine

Model	BF250 (X)
Horsepower	250
Displacement	3.6 V6 VTEC
Weight (lbs)	613
Gear Ratio	2
Mounting Hole	#2
Prop Material	Stainless Steel
Diameter / Pitch	15.25 X 19 X 3
Honda Part #	58133-ZY3-A19LX

Test Conditions

No. of People	2
Fuel Load	25Gal
Air Temperature	89
Test Conditions	Calm
Elevation	S/L
Wind Velocity	10 mph
Test Date	8/10/2017

Data presented should be used as a guide. Actual results may vary due to changes in weather, water conditions, elevation and load. Honda reserves the right to change the specifications on this report or it's engines without notice



TRUE
5
YEAR
LIMITED
WARRANTY

The best warranty in the business.

Only Honda gives you a full, five years, non-declining warranty.

No strings. No catches. It's that simple.



marine.honda.com

© 2017 American Honda Motor Co., Inc