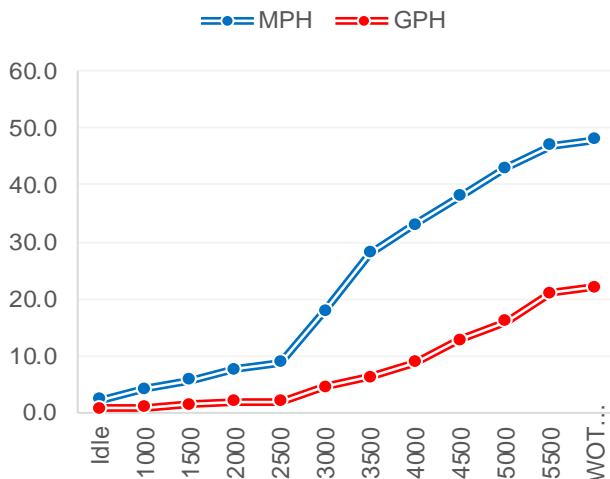




## Performance Data

RPM	MPH	GPH	MPG
Idle	2.30	0.80	2.88
1000	4.20	1.00	4.20
1500	5.70	1.40	4.07
2000	7.60	2.00	3.80
2500	8.80	2.00	4.40
3000	18.00	4.60	3.91
3500	28.00	6.20	4.52
4000	33.00	8.80	3.75
4500	38.00	12.80	2.97
5000	43.00	16.00	2.69
5500	47.00	21.00	2.24
WOT 5700	48.00	22.00	2.18

Accel 0-20 MPH 4.4  
Time to Plane 3.4



## Boat

Boat Manufacture	BAYTOON Boats
Website	baytoon.net
Model	2300
Length	23'
Beam	9'6"
Dry Weight (lbs)	4200
Max HP	300
Fuel Cap. (gal)	70

## Engine

Model	BF250 (X)
Horsepower	250
Displacement	3.6 V6 VTEC
Weight (lbs)	613
Gear Ratio	2
Mounting Hole	#2
Prop Material	Stainless Steel
Diameter / Pitch	15.5 X 18 X 3
Honda Part #	58133-ZY3-A18LX

## Test Conditions

No. of People	3
Fuel Load	55 Gallons
Air Temperature	88
Test Conditions	Calm
Elevation	Sea Level
Wind Velocity	9 mph
Test Date	5/17/2017

Data presented should be used as a guide. Actual results may vary due to changes in weather, water conditions, elevation and load. Honda reserves the right to change the specifications on this report or it's engines without notice

**TRUE 5 YEAR LIMITED WARRANTY**

The best warranty in the business.

Only Honda gives you a full, five years, non-declining warranty.

No strings. No catches. It's that simple.



marine.honda.com

© 2017 American Honda Motor Co., Inc