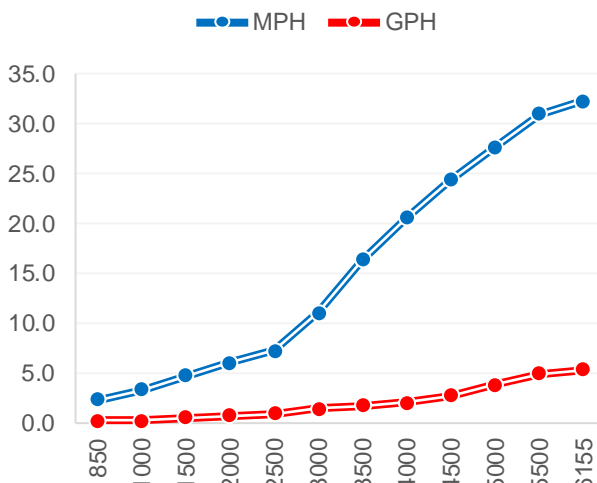




## Performance Data

| RPM        | MPH   | GPH  | MPG   |
|------------|-------|------|-------|
| Idle       | 2.30  | 0.19 | 12.02 |
| 1000       | 3.34  | 0.29 | 11.72 |
| 1500       | 4.79  | 0.52 | 9.25  |
| 2000       | 6.06  | 0.74 | 8.14  |
| 2500       | 7.29  | 0.98 | 7.46  |
| 3000       | 11.04 | 1.48 | 7.48  |
| 3500       | 16.41 | 1.76 | 9.34  |
| 4000       | 20.58 | 2.07 | 9.94  |
| 4500       | 24.41 | 2.77 | 8.80  |
| 5000       | 27.66 | 3.86 | 7.17  |
| 5500       | 31.01 | 4.99 | 6.21  |
| WOT 6154.5 | 32.30 | 5.39 | 5.99  |

Accel 0-20 MPH  
Time to Plane



## Boat

|                  |                |
|------------------|----------------|
| Boat Manufacture | Walker Bay     |
| Website          | walkerbay.com  |
| Model            | Generation 450 |
| Length           | 14'9"          |
| Beam             | 7'             |
| Dry Weight (lbs) | 633            |
| Max HP           | 75             |
| Fuel Cap. (gal)  | 15             |

## Engine

|                  |                 |
|------------------|-----------------|
| Model            | BF60 (L)        |
| Horsepower       | 60              |
| Displacement     | 1L I3           |
| Weight (lbs)     | 239             |
| Gear Ratio       | 2.07            |
| Mounting Hole    | #2              |
| Prop Material    | Aluminum        |
| Diameter / Pitch | 11 X 15 X 3     |
| Honda Part #     | 59130-ZV5-015AH |

## Test Conditions

|                 |            |
|-----------------|------------|
| No. of People   | 1          |
| Fuel Load (gal) | 15 gallons |
| Air Temperature | 66 F       |
| Wind Velocity   | 10-15 mph  |
| Elevation (ft)  | 662        |
| Test Date       | 5/3/2016   |

Data presented should be used as a guide. Actual results may vary due to changes in weather, water conditions, elevation and load. Honda reserves the right to change the specifications on this report or it's engines without notice



marine.honda.com

© 2016 American Honda Motor Co., Inc