



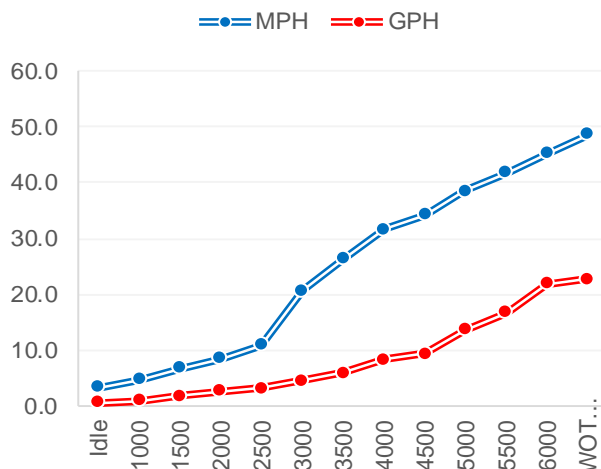
Performance Data

RPM	MPH	GPH	MPG
Idle	3.40	0.50	6.80
1000	4.70	0.90	5.22
1500	6.70	1.70	3.94
2000	8.50	2.70	3.15
2500	10.90	3.20	3.41
3000	20.70	4.50	4.60
3500	26.40	5.90	4.47
4000	31.60	8.30	3.81
4500	34.30	9.40	3.65
5000	38.50	13.70	2.81
5500	41.80	16.80	2.49
6000	45.2	21.9	2.06

WOT 6100 48.6 22.7 2.14

Accel 0-30 MPH 5.8

Time to Plane



Boat

Boat Manufacture	Carolina Skiff
Website	www.carolinaskiff.com
Model	240 Ultra Elite
Length	23'9"
Beam	96"
Dry Weight (lbs)	3168
Max HP	250
Fuel Cap. (gal)	78
Hull Type	V Hull

Engine

Model	BF250 (X)
Horsepower	250
Displacement	3.6 V6 VTEC
Weight (lbs)	600
Gear Ratio	2
Mounting Hole	#2
Prop Material	Stainless Steel
Diameter / Pitch	15.5 X 17 X 3
Honda Part #	58133-ZY3-A17LX

Test Conditions

No. of People	2
Fuel Load	25 ga
Air Temperature	82 F
Test Conditions	Calm
Elevation	Sea Level
Wind Velocity	15 mph
Test Date	2/12/2018

Data presented should be used as a guide. Actual results may vary due to changes in weather, water conditions, elevation and load. Honda reserves the right to change the specifications on this report or its engines without notice.

TRUE 5 YEAR LIMITED WARRANTY

The best warranty in the business. Only Honda gives you a full, five years, non-declining warranty.

No strings. No catches. It's that simple.

marine.honda.com

© 2018 American Honda Motor Co., Inc.