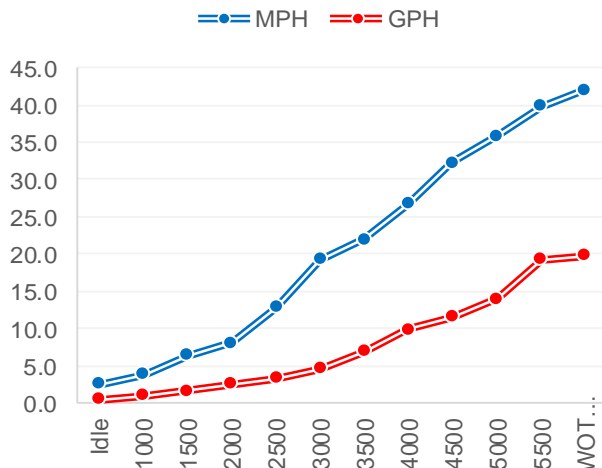


Performance Data

RPM	MPH	GPH	MPG
Idle	2.50	0.50	5.00
1000	3.80	0.90	4.22
1500	6.30	1.60	3.94
2000	8.00	2.50	3.20
2500	12.80	3.30	3.88
3000	19.30	4.60	4.20
3500	22.00	6.90	3.19
4000	26.70	9.80	2.72
4500	32.30	11.50	2.81
5000	35.80	13.90	2.58
5500	39.90	19.30	2.07
WOT 5850	42.10	19.80	2.13

Accel 0-20 MPH 5.4
 Time to Plane



Boat

Boat Manufacture	Coach
Website	coachpontoons.com
Model	230RL
Length	23'
Beam	0
Dry Weight (lbs)	0
Max HP	0
Fuel Cap. (gal)	0
Hull Type	3 Tube

Engine

Model	BF225 (X)
Horsepower	225
Displacement	3.5L V6 VTEC
Weight (lbs)	599
Gear Ratio	1.86
Mounting Hole	#2
Prop Material	Stainless Steel
Diameter / Pitch	15.75 X 15 X 3
Honda Part #	58133-ZY3-A15LX

Test Conditions

No. of People	2
Fuel Load	full
Air Temperature	86
Test Conditions	light chop
Elevation	1071
Wind Velocity	5
Test Date	9/8/2017

Data presented should be used as a guide. Actual results may vary due to changes in weather, water conditions, elevation and load. Honda reserves the right to change the specifications on this report or its engines without notice.

