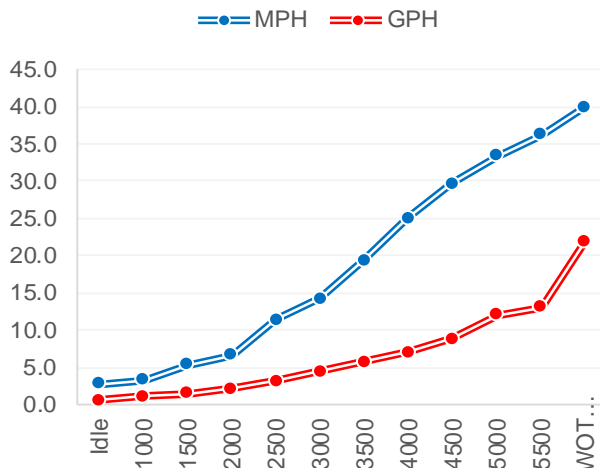




## Performance Data

RPM	MPH	GPH	MPG
Idle	2.80	0.60	4.67
1000	3.30	1.10	3.00
1500	5.30	1.50	3.53
2000	6.60	2.10	3.14
2500	11.40	3.10	3.68
3000	14.20	4.40	3.23
3500	19.40	5.70	3.40
4000	25.00	7.00	3.57
4500	29.70	8.80	3.38
5000	33.40	12.00	2.78
5500	36.30	13.00	2.79
WOT 6000	40.00	22.00	1.82

Accel 0-20 MPH  
Time to Plane



## Boat

Boat Manufacture	Tidewater
Website	tidewaterboats.com
Model	2110 BayMax
Length	21'6"
Beam	98"
Dry Weight (lbs)	2100
Max HP	200
Fuel Cap. (gal)	56
Hull Type	V Hull


## Engine

Model	BF150 (X)
Horsepower	150
Displacement	2.4L I4 VTEC
Weight (lbs)	485
Gear Ratio	2.14
Mounting Hole	#2
Prop Material	Stainless Steel
Diameter / Pitch	14.25 X 17 X 3
Honda Part #	58133-ZY3-A17AH

## Test Conditions

No. of People	2
Fuel Load	50 Gallons
Air Temperature	75F
Test Conditions	Calm
Elevation	Sea Level
Wind Velocity	9 mph
Test Date	1/31/2018

Data presented should be used as a guide. Actual results may vary due to changes in weather, water conditions, elevation and load. Honda reserves the right to change the specifications on this report or its engines without notice.



**TRUE**  
**5**  
**YEAR**  
**LIMITED**  
**WARRANTY**

**The best warranty in the business.**

Only Honda gives you a full, five years, non-declining warranty.

No strings. No catches. It's that simple.



[marine.honda.com](http://marine.honda.com)

© 2018 American Honda Motor Co., Inc.