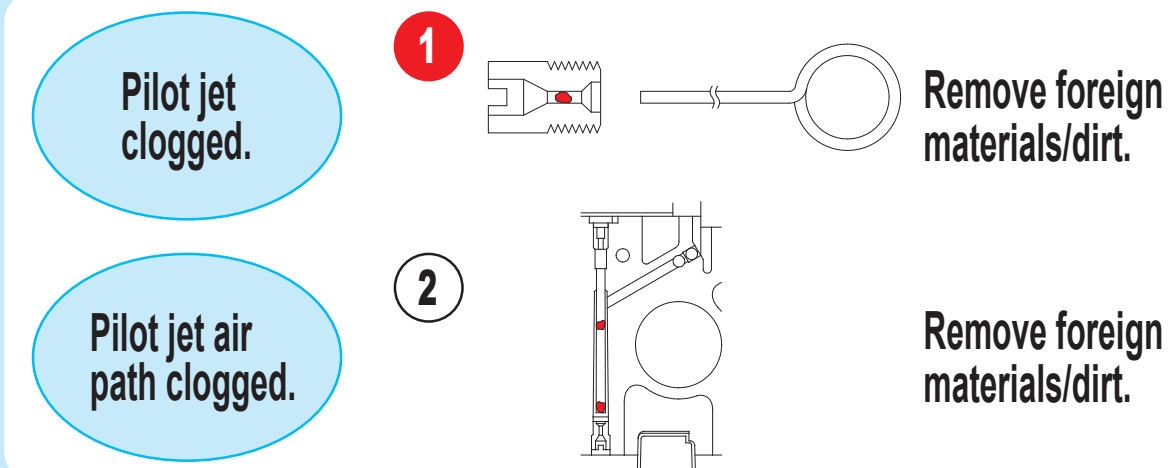
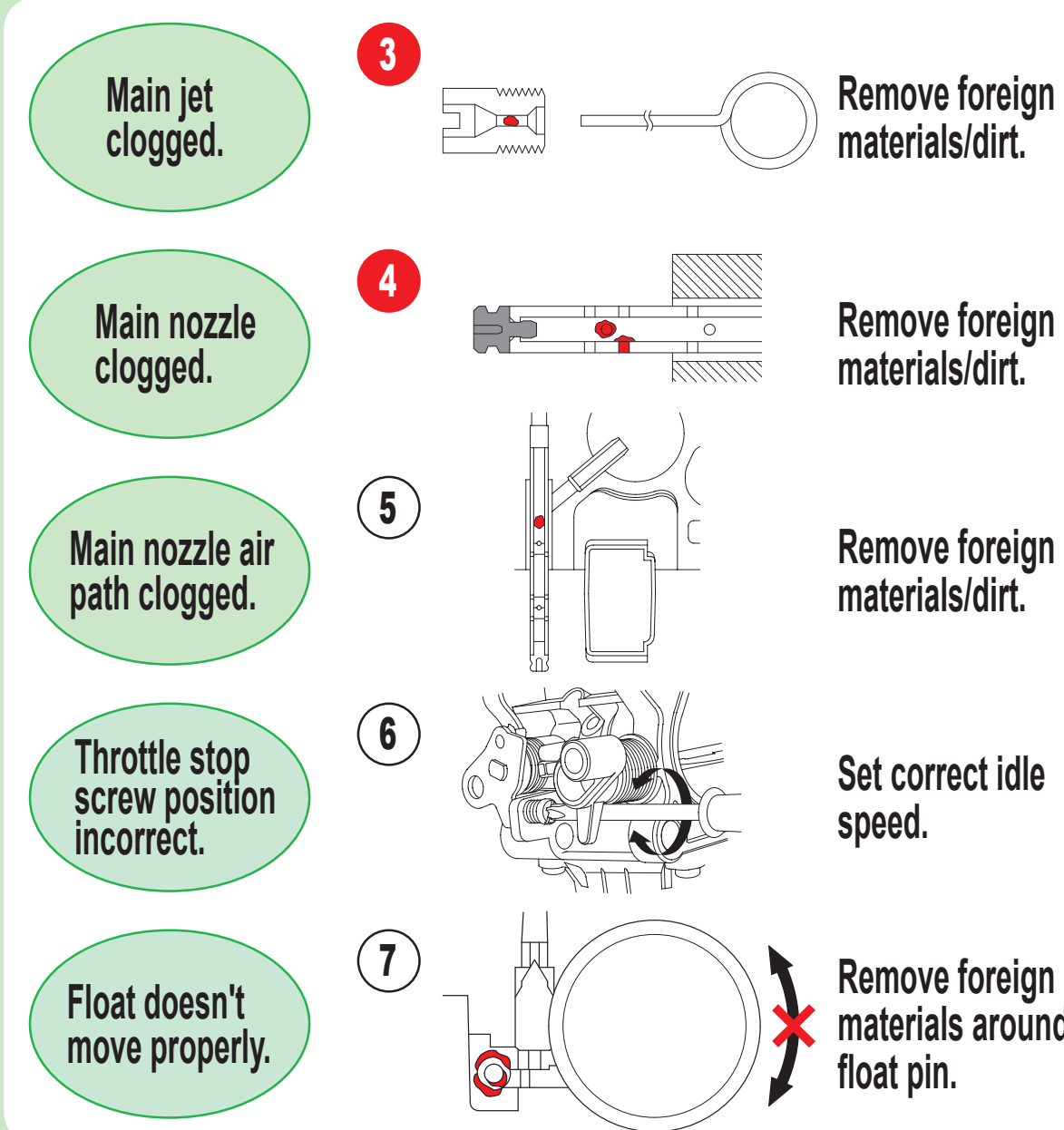


- ◆ Unstable idle speed
- ◆ Poor performance at low speed

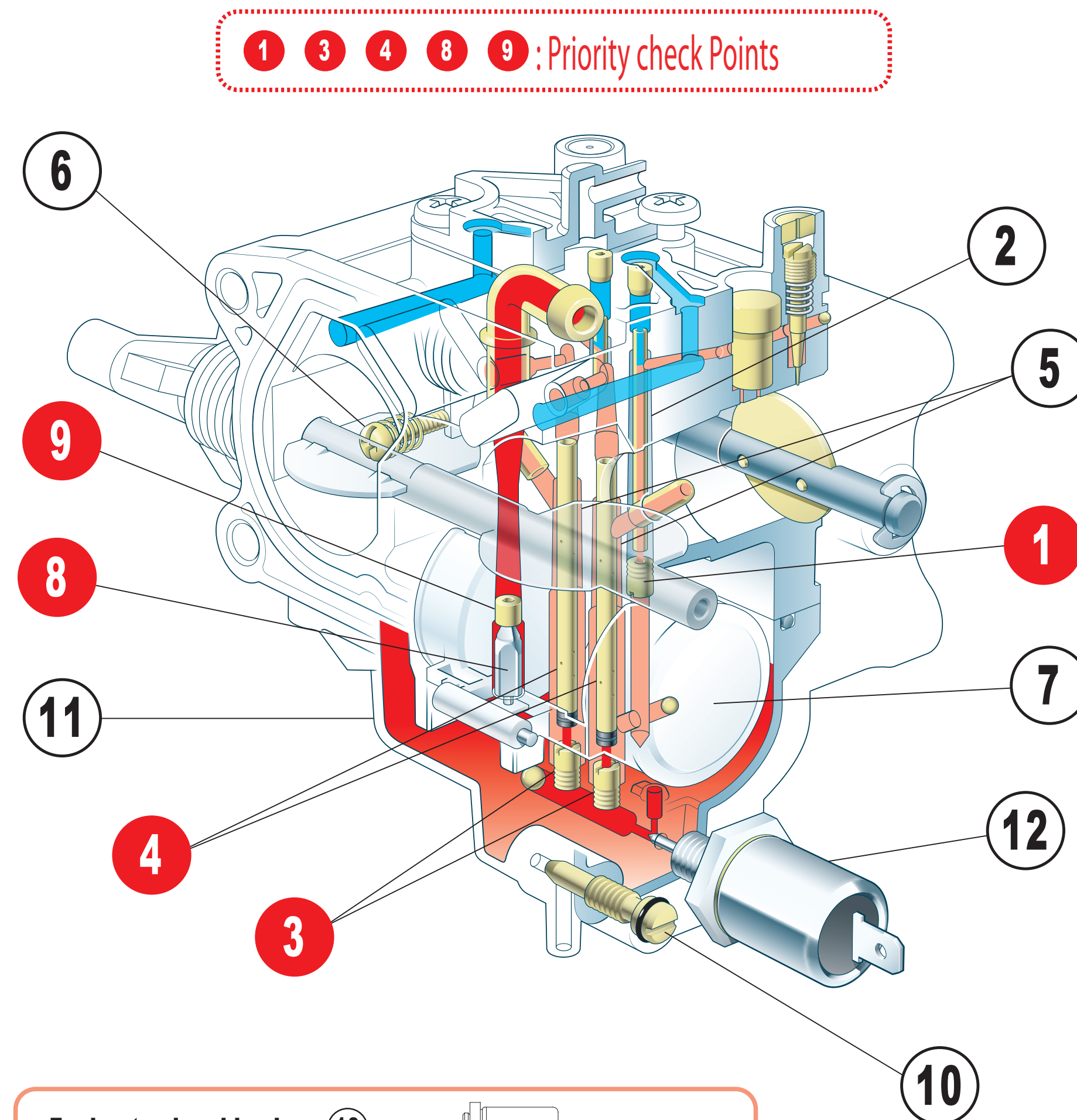
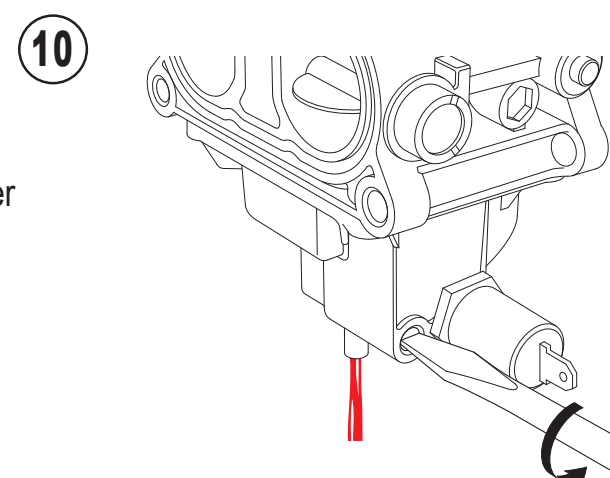


- ◆ Engine does not start
- ◆ Hard starting
- ◆ Engine starts but quickly stops



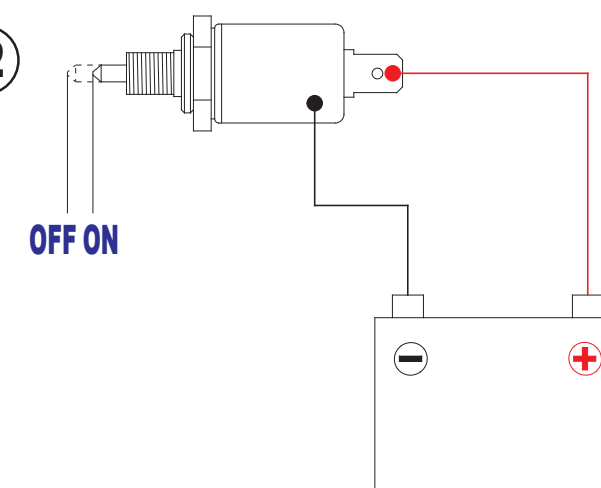
Engine storage (More than 3 months)

Drain gasoline from the float chamber by loosening the drain screw while the engine is stopped.



Fuel cut solenoid valve 12

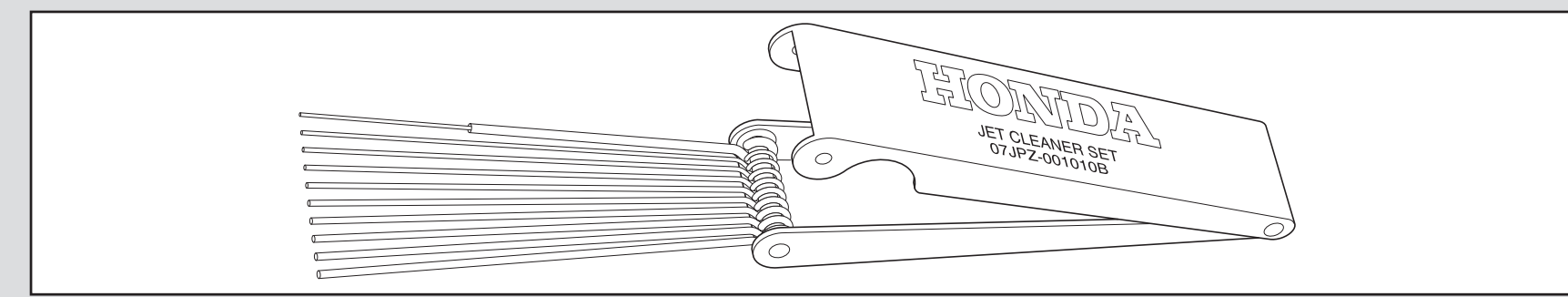
Connect the 12V battery to the fuel cut solenoid valve connector as shown. Check the needle of the valve, it should retract in when powered.



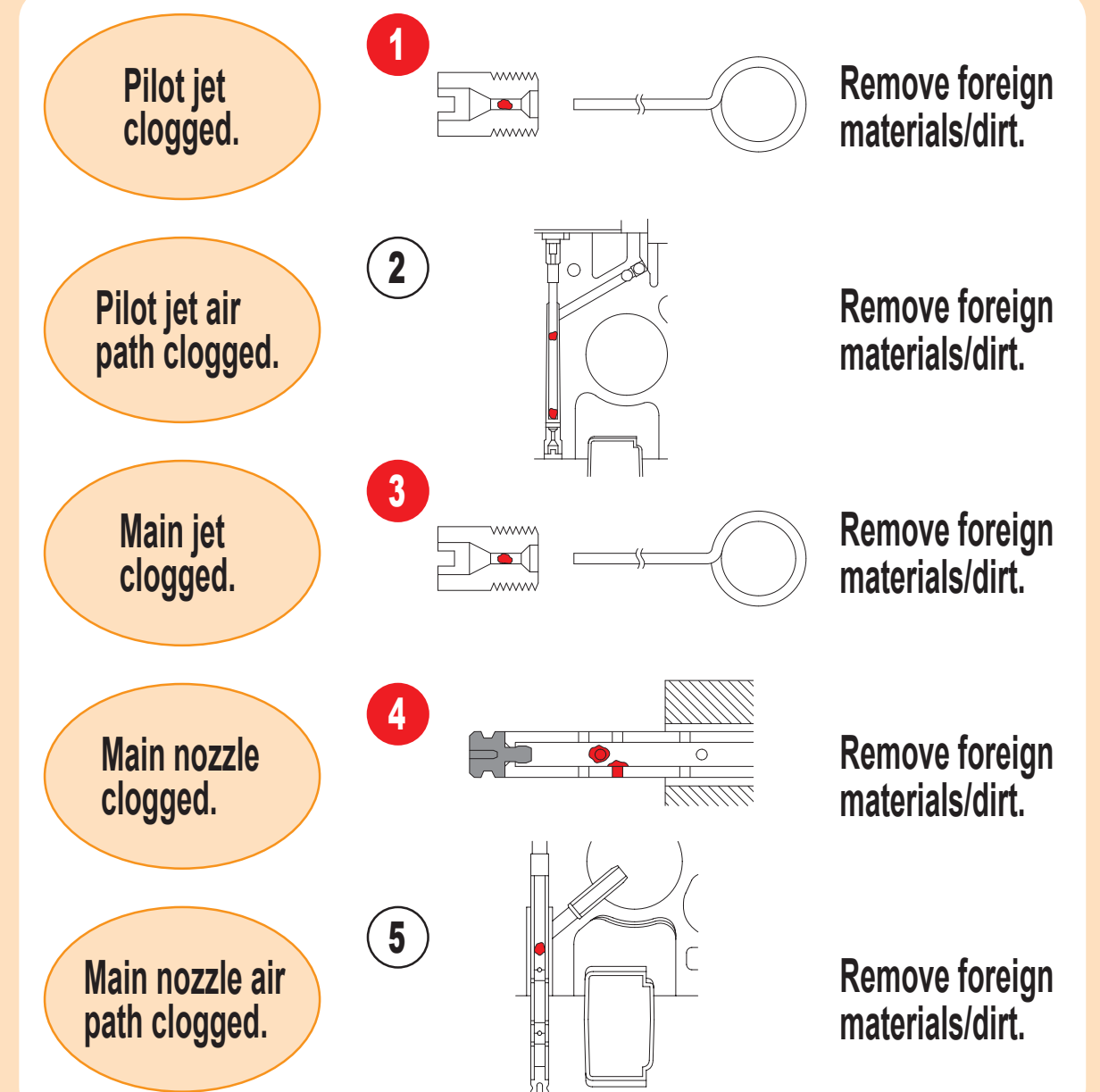
Blue : Air flow
Red : Fuel flow
Orange : Mixture

Carburetor Jet Cleaner Set (07JPZ-001010B)

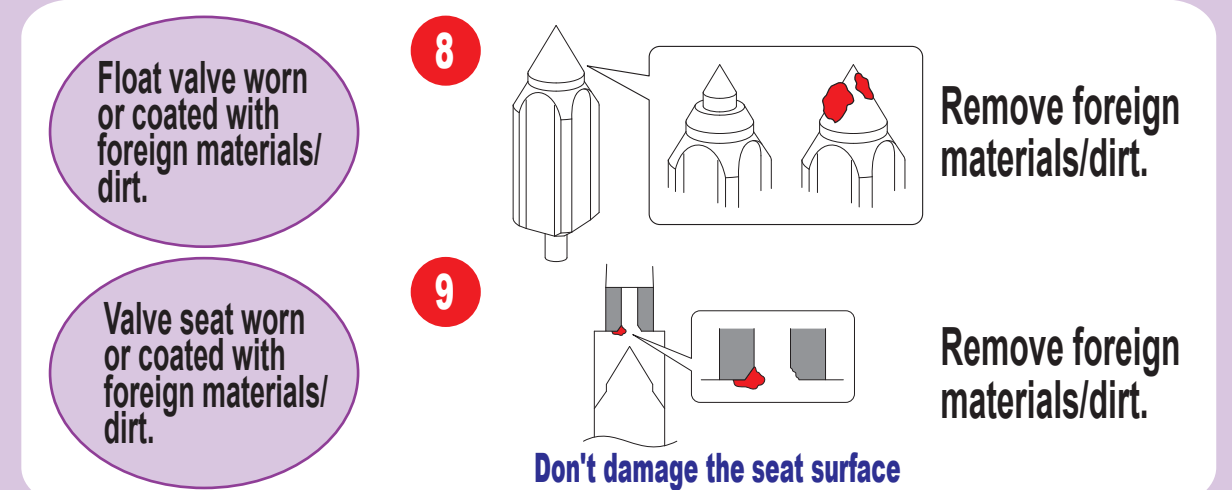
Carburetor cleaning tool is useful for removing foreign materials/dirt.



- ◆ Engine speed does not increase
- ◆ Poor performance at high speed
- ◆ Unstable engine speed



- ◆ Overflow
- ◆ Gasoline leaks



Check float chamber

Water inside the float chamber can cause engine failure. Remove float chamber and clean or replace.

