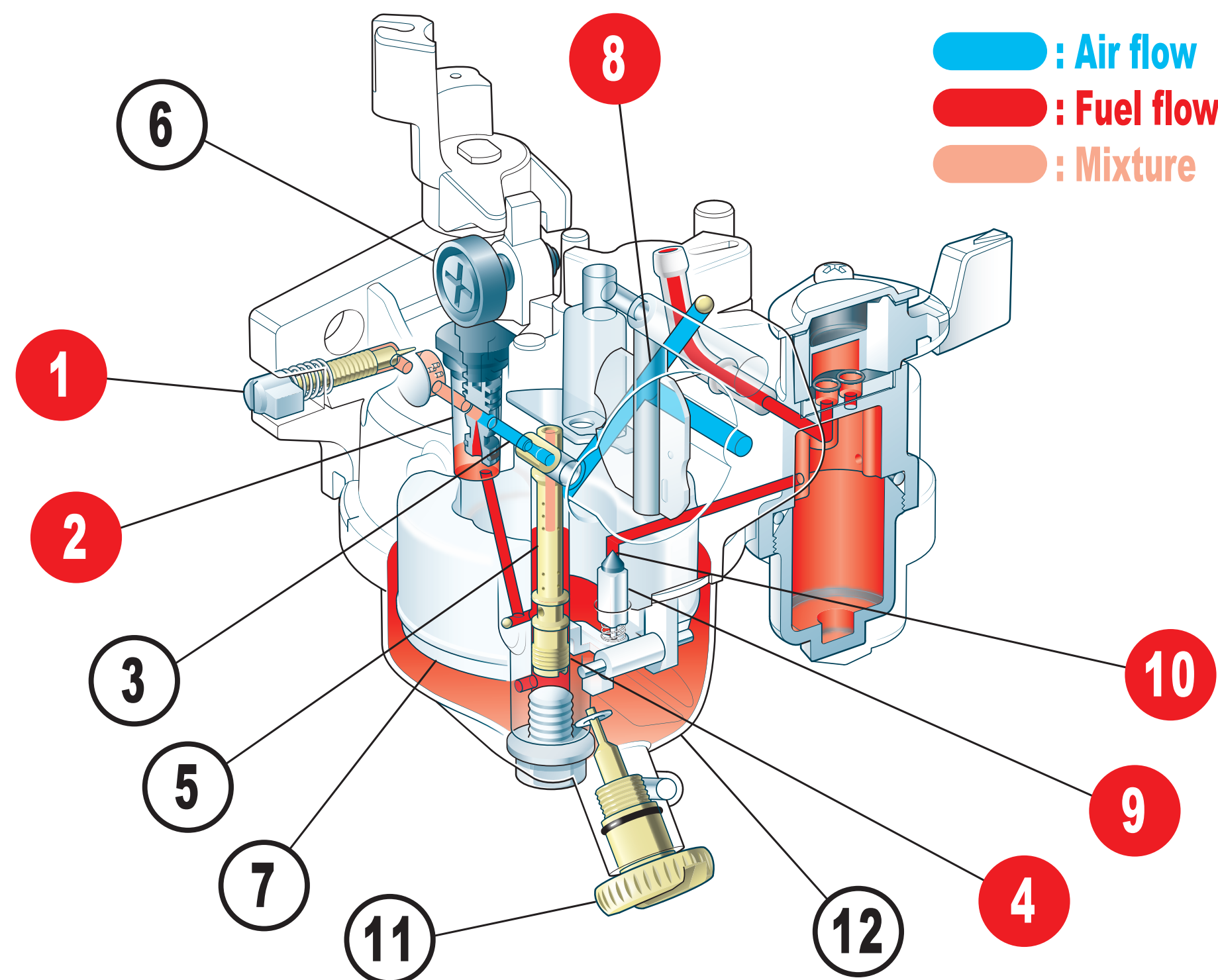


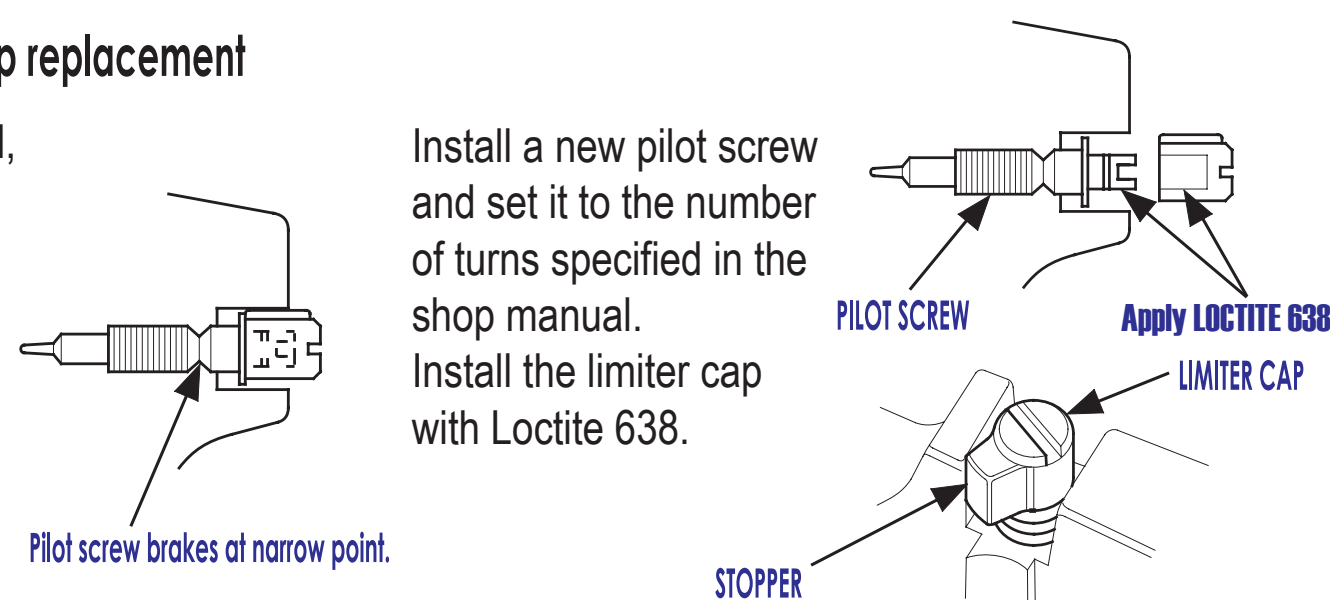
GX120/140/160/200/240/270/340/390 Carburetor Check Sheet

1 2 4 8 9 10 : Priority check Points



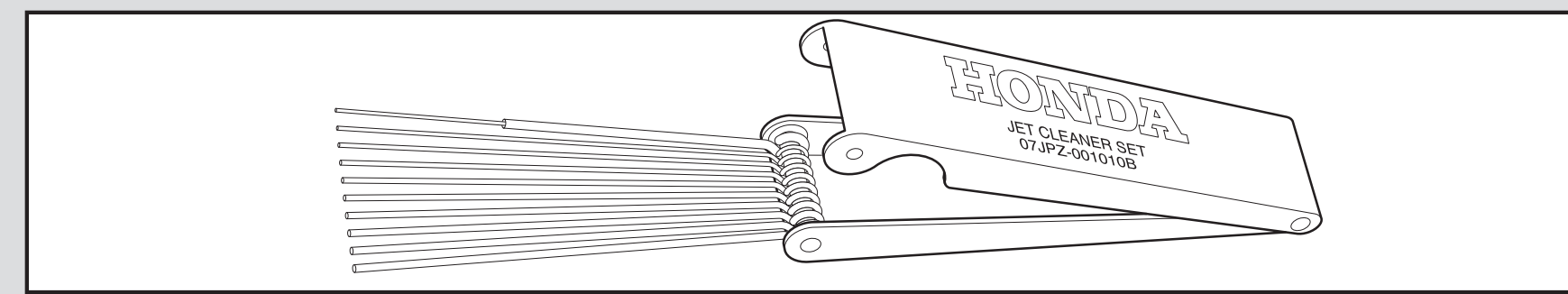
Pilot screw and limiter cap replacement

When the cap is removed, the pilot screw breaks at the middle of its thread. To remove the remaining screw, fit an appropriate rubber tube over the remaining end and turn it out.



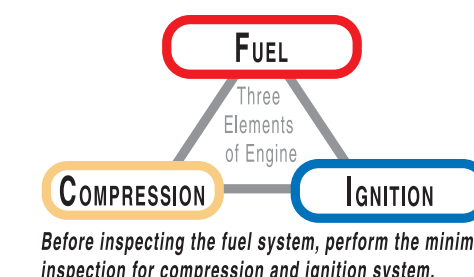
Carburetor Jet Cleaner Set (07JPZ-001010B)

Carburetor cleaning tool is useful for removing foreign materials/dirt.

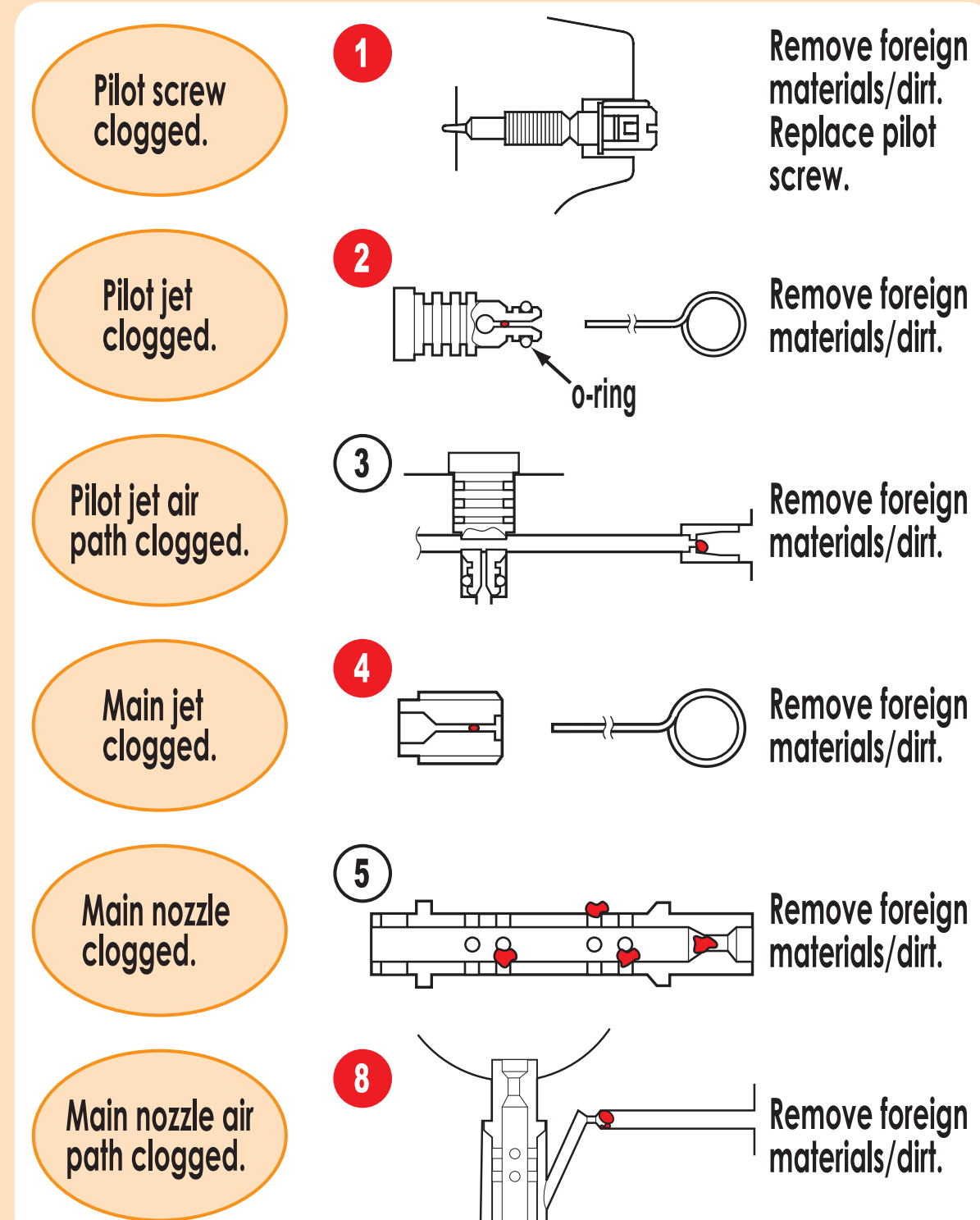


* See specific shop manual for detailed information

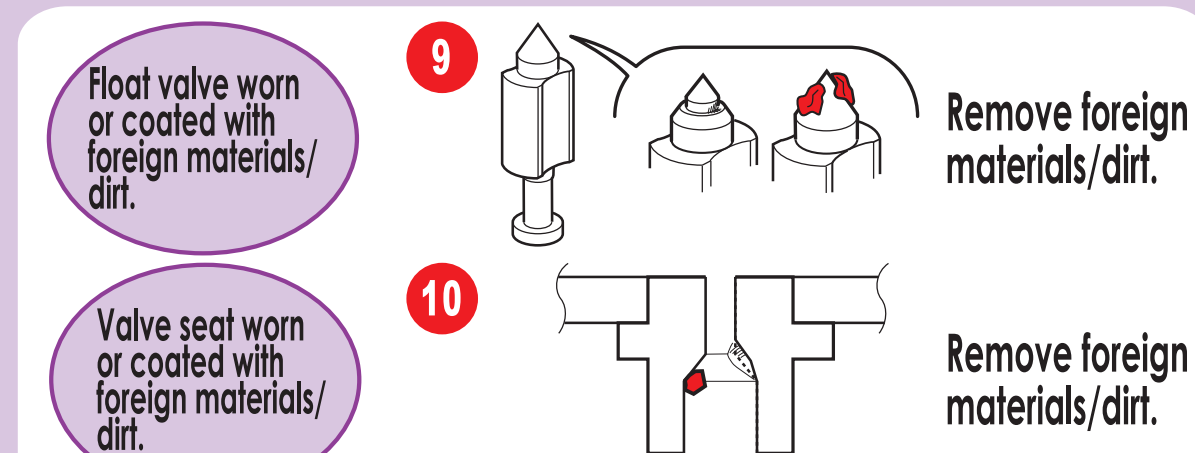
For General
Reference Only*



- Engine speed does not increase
- Poor performance at high speed
- Unstable engine speed



- Overflow
- Gasoline leaks

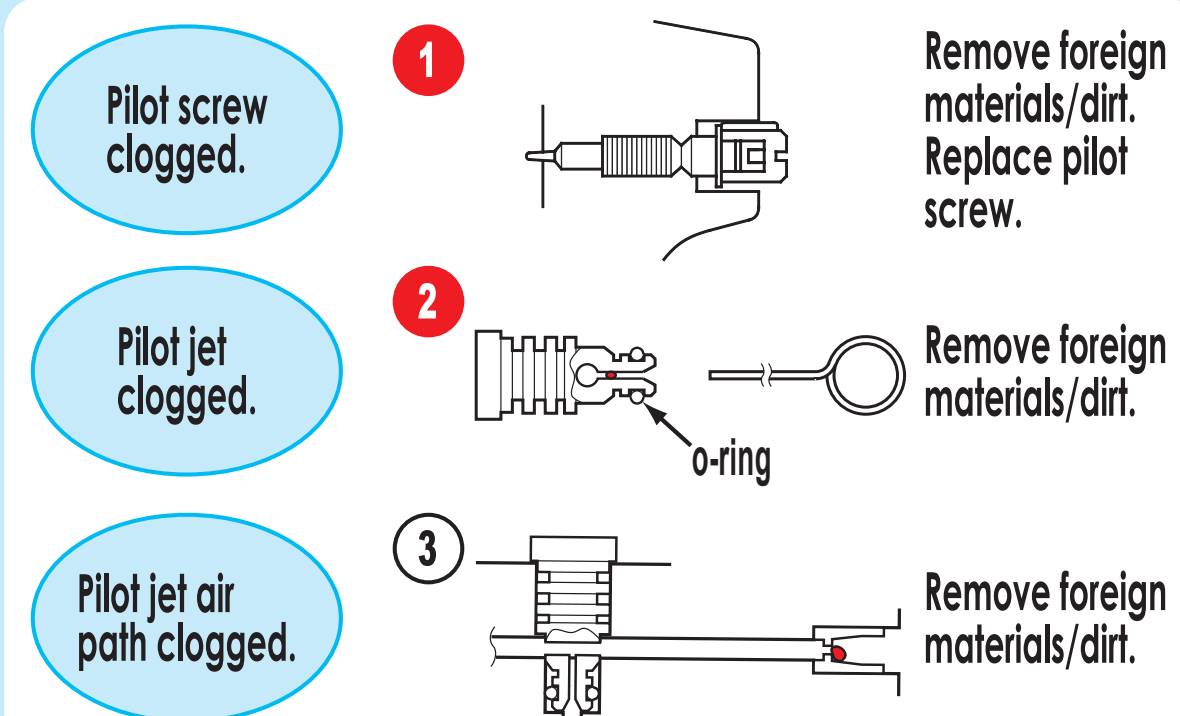


Check float chamber

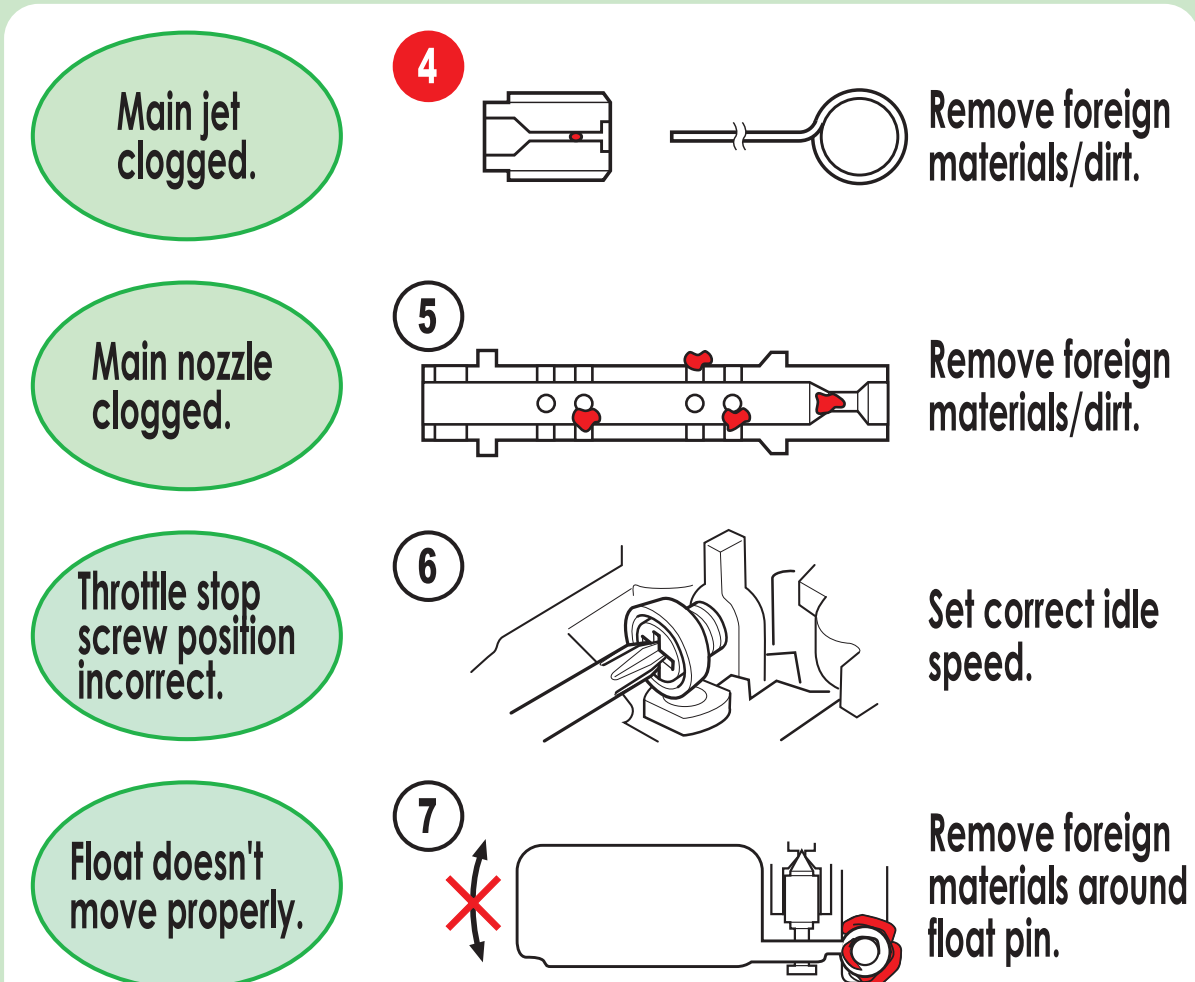
Water inside the float chamber can cause engine failure. Remove float chamber and clean or replace.



- Unstable idle speed
- Poor performance at low speed



- Engine does not start
- Hard starting
- Engine starts but quickly stops



Engine storage (More than 3 months)

Drain gasoline from the float chamber by loosening the drain screw while the engine is stopped. Take off the strainer cup and pour gasoline in an appropriate container.

