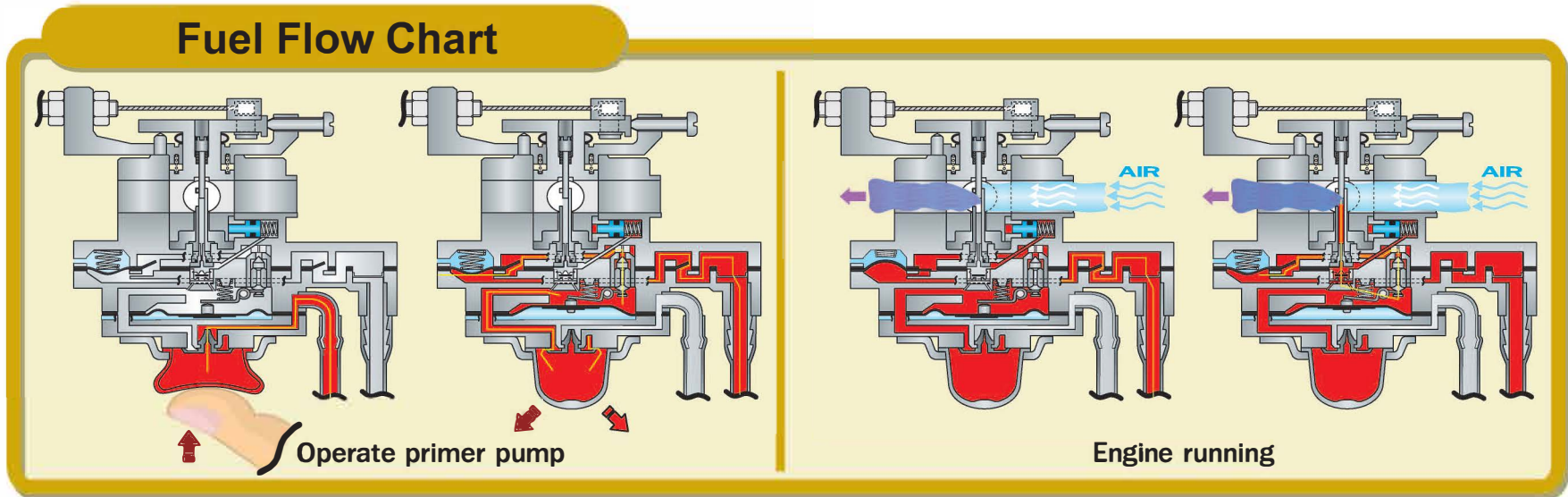
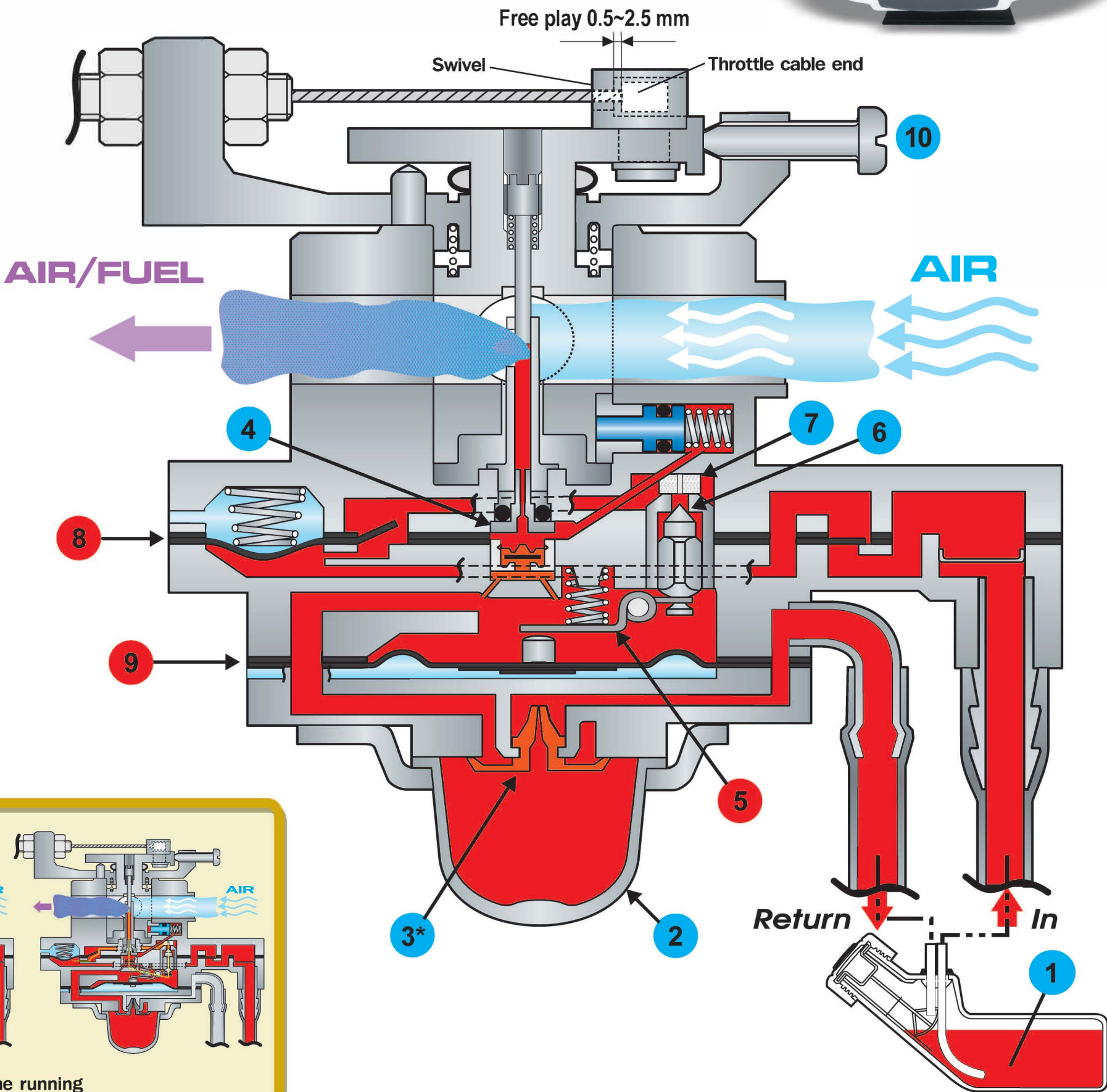
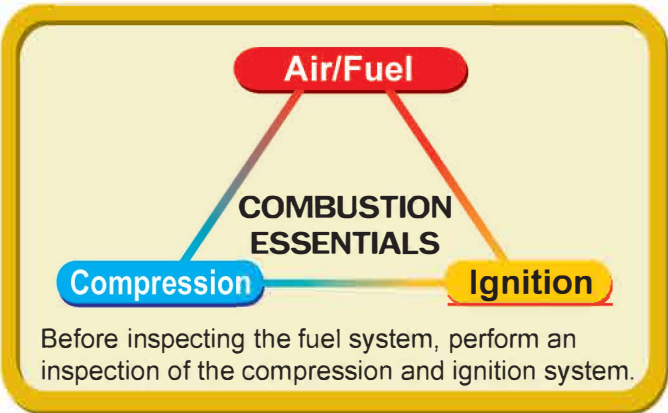


*Combination valve is part of the air purge body assy.



	1	2	3*	4		6	7		9	10	
	Fuel filter	Primer pump	Combination valve	Main jet	Metering lever	Inlet needle valve	Fuel inlet filter	Pump diaphragm	Metering diaphragm	Throttle stop screw	Shroud
Inspection points											
Hard to prime with primer bulb	●	●	●		●			●	●		
Engine does not start	●	●	●	●	●	●	●	●	●	●	
Unstable idle speed	●			●	●	●	●	●	●	●	●
Unstable high speed	●			●	●	●	●	●	●		
Poor acceleration	●			●	●	●	●	●	●		●
Fuel overflow					●	●			●		

Special Attention

Do not adjust the idle needle pin during carburetor maintenance.

Check the pump diaphragm and metering diaphragm for tears, stiffness, or damage.

Do not apply high pressure air to plastic and rubber parts.

The pump diaphragm and metering diaphragm are made of rubber and will deteriorate over time.

Clean using a soft brush

Advise your customer to use a fuel stabilizer for intermittent use and drain the fuel system for storage longer than 1 year.

1. Drain fuel from tank.

2. Drain fuel from carburetor.

3. Drain fuel from fuel tank again.

4. Keep engine in shady and ventilated storage.

Ultrasonic Parts Cleaner
Call 888-424-6857



- 1. Cleans in 10 - 20 min.
- 2. Uses soapy water and heat.
- 3. Will not harm seals & O-rings.
- 4. Cleans internal passageways.