

# HANDLE AND WHEEL KIT INSTALLATION



Honda Power Equipment

## Select EB and EM Series Generators

Your generator is equipped with a wheel kit and folding handle kit for easy transport and convenient storage. The following information below applies to these models of generators.

EB4000X	EM4000SX
EB5000XK2	EM5000S XK2
EB5000XK3	EM5000S XK3
EB6500X	EM6500S XK1
EB6500X1	EM6500S XK2

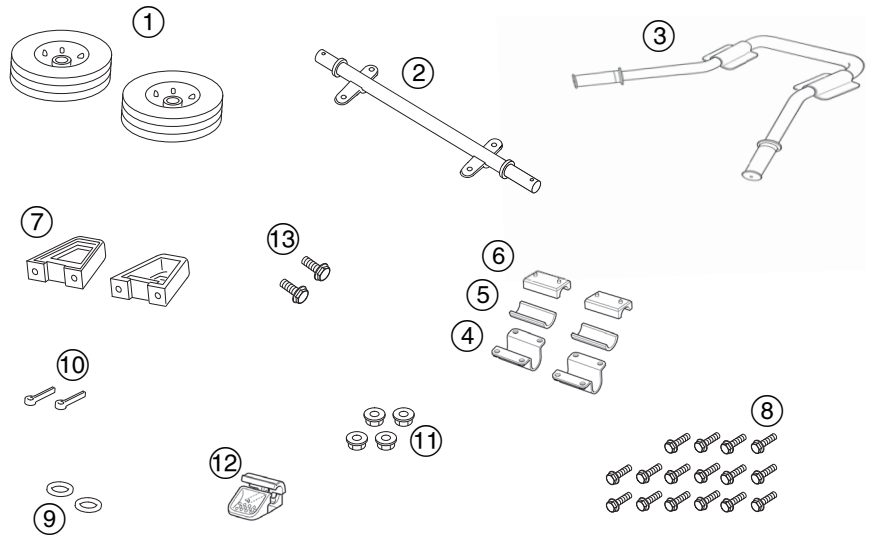
If you are not comfortable completing the steps to install the handle and wheel kit, contact an authorized Honda Power Equipment dealer for assistance. To find a dealer near you, visit [powerequipment.honda.com](http://powerequipment.honda.com), or call Customer Relations at 770-497-6400.

## UNPACKING

1. Remove the generator from the box by lifting the generator out with the help from an assistant, or carefully cutting the box away.
2. Set the generator on a level and protected surface to prevent scratches.
3. Remove the loose parts from the box. Compare the loose parts with the inventory list below. Contact your dealer if any parts shown below are not included with your generator.

## LOOSE PARTS

Ref No	Description	Qty
①	Wheel	2
②	Axle Shaft	1
③	Handle Assembly	1
④	Handle Lower Bracket	2
⑤	Handle Bushing B	2
⑥	Handle Bushing A	2
⑦	Stand	2
⑧	8 x 16 mm Flange Bolt	16
⑨	20 mm Plain Washer	2
⑩	4.0 x 28 mm Split Pin	2
⑪	8 mm Flange Nut	4
⑫	Handle Folder Assembly	1
⑬	8 x 18 mm Flange Bolt	2

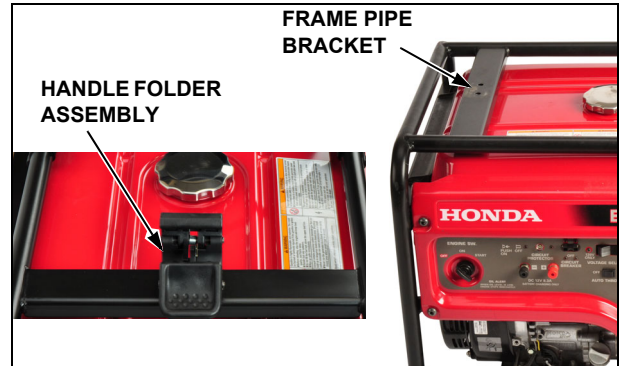


## ASSEMBLY

### Handle Installation

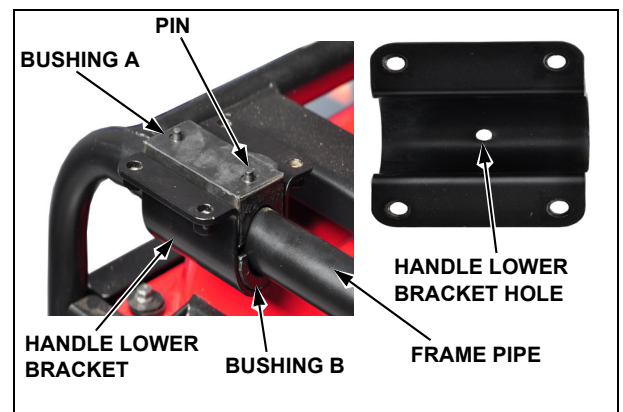
*Tools Required: 12 mm wrench, 12 mm socket, ratchet, 6-8 inch socket extension, torque wrench*

1. Install the handle folder assembly onto the frame pipe bracket and hand tighten the two 8 x 18 mm flange bolts.

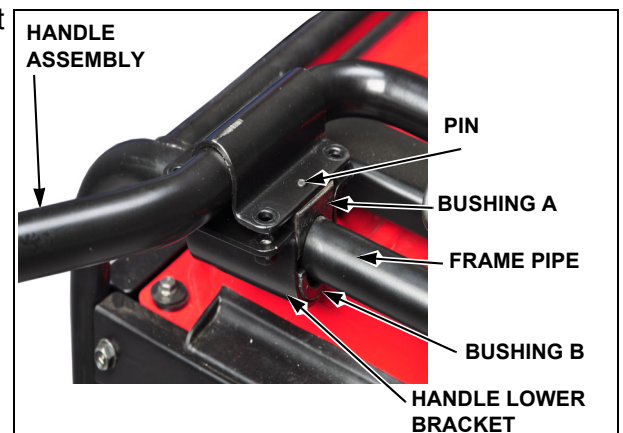


2. Place one handle bushing B into each handle lower bracket. Make sure the pin on the bottom of the handle bushing B goes into the hole in the bottom of the handle lower bracket.

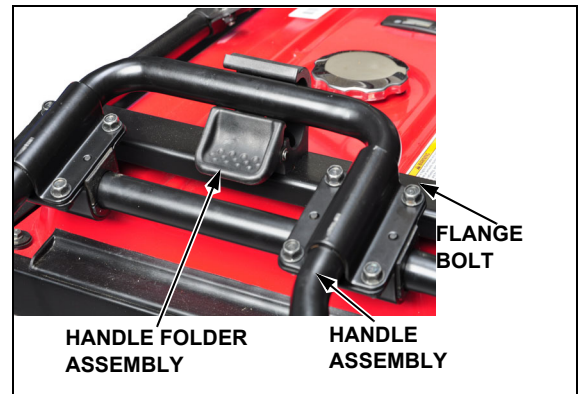
Place both handle bushings A on to the top frame pipe approximately 12 inches from each other.



3. Place the handle assembly over both bushings A so that the holes in the handle assembly fit around the pins on the handle bushings A. Hold one side of the handle assembly, bushings A and B, and handle lower bracket together, and then install and hand tighten the four 8 x 16 mm flange bolts. Repeat this step for the other side of the handle assembly.



4. Raise the handle assembly until it locks into the handle folder assembly, and ensure it locks and releases smoothly. If it does not, the handle folder assembly may need to be adjusted before fully tightening the flange bolts.



5. Tighten the flange bolts on the handle folder assembly and handle assembly securely. Do not over tighten. Tighten all of the bolts to the specified torque.

**TORQUE: 17-22 lb-ft (24-29 N•m)**

After tightening the flange bolts, raise and lower the handle assembly and check for smooth operation.

### NOTICE

*Do not use your body weight to press down on the handle while it is locked in the horizontal position. Pressing down on the handles may damage the handle folder assembly. Only pull up on the handles to move the generator.*



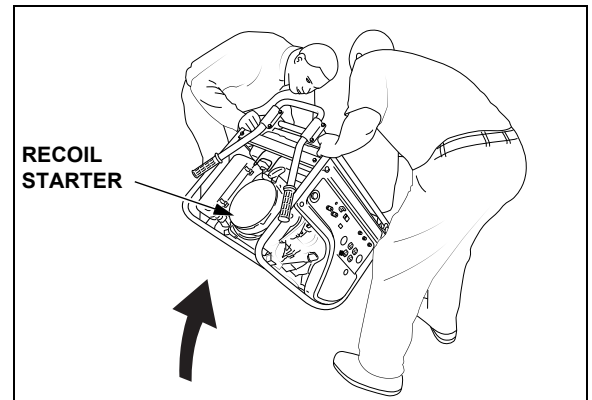
### Wheel Kit Installation

*Tools Required: 12 mm wrench, 12 mm socket, ratchet, 6-8 inch socket extension, torque wrench*

#### NOTICE

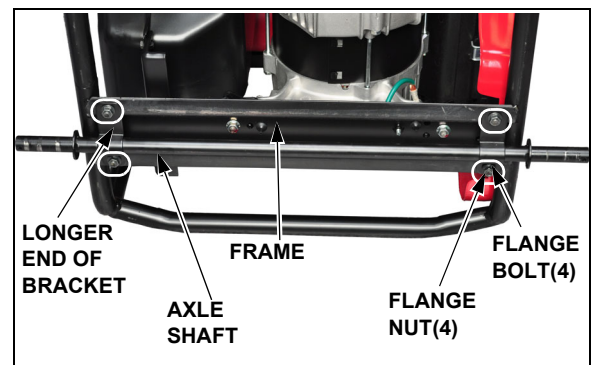
*Do not add gas or oil before tipping the generator. Oil or fuel may damage the engine or your property.*

1. Tip the generator up on the end opposite the recoil starter. Help from an assistant may be needed.

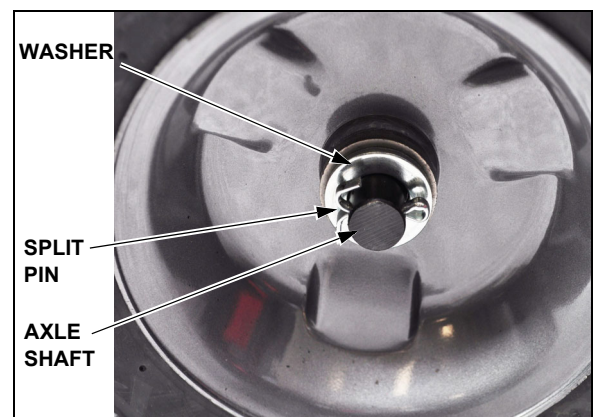


2. Install the axle shaft onto the generator frame with the longer end of the bracket facing the recoil starter. Insert the four 8 x 16 mm flange bolts into the top side of the frame and then into the axle brackets. Attach the 8 mm flange nuts to the flange bolts from the bracket side and tighten securely. Do not overtighten. Tighten the bolts to the specified torque.

**TORQUE: 17-22 lb-ft (24-29 N•m)**

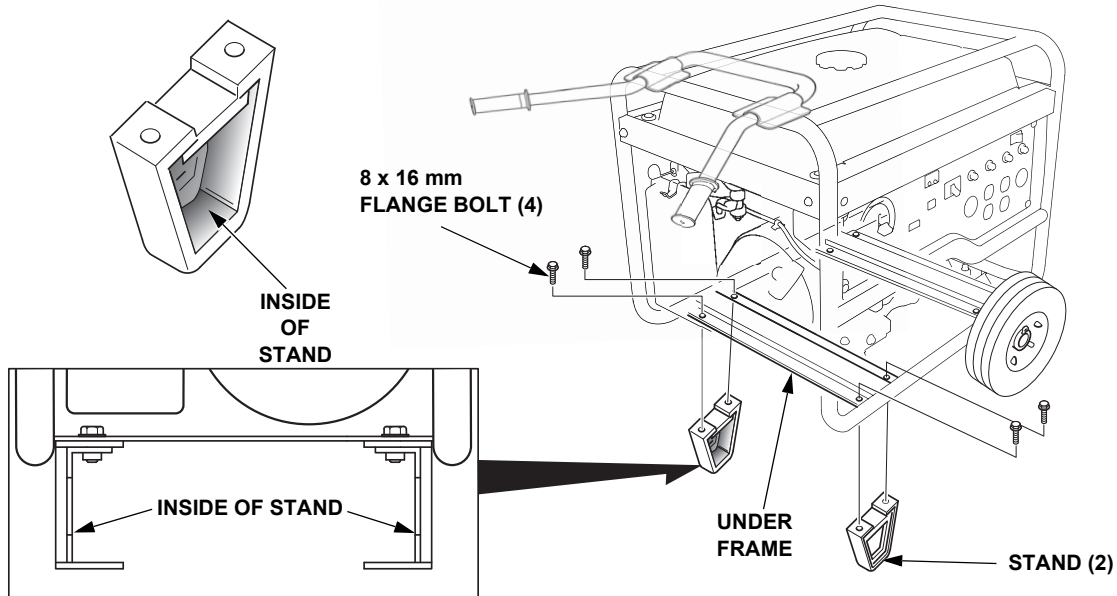


3. Slide the wheels onto the axle, and then install one plain washer onto each end of the axle. Insert the split pins through the small holes near both ends of the axle. Use a pair of pliers to bend the split pins around the axle to prevent the wheels from sliding off of the axle.



4. Install the two stands to the under frame using four 8 x 16 mm flange bolts, with the inside of the stands facing each other. Tighten the bolts securely. Do not overtighten. Tighten the bolts to the specified torque.

**TORQUE: 17-22 lb-ft (24-29 N•m)**



5. After the wheel kit has been installed, return the generator to the upright position so that it rests on the wheels and stands. Help from an assistant may be needed to prevent the generator from rolling when returning to the upright position.

**NOTICE**

*Do not pull or push on the handle assembly while returning the generator to the upright position, or damage may occur to the handle assembly.*

