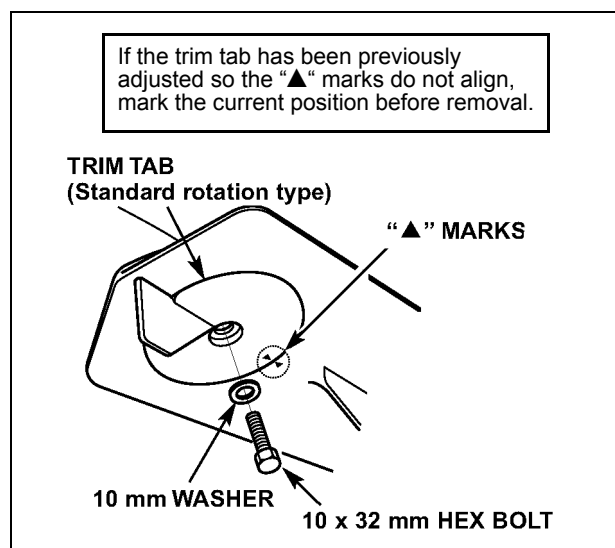


Water Pump Replacement for BF200A • BF225A Outboard Motors

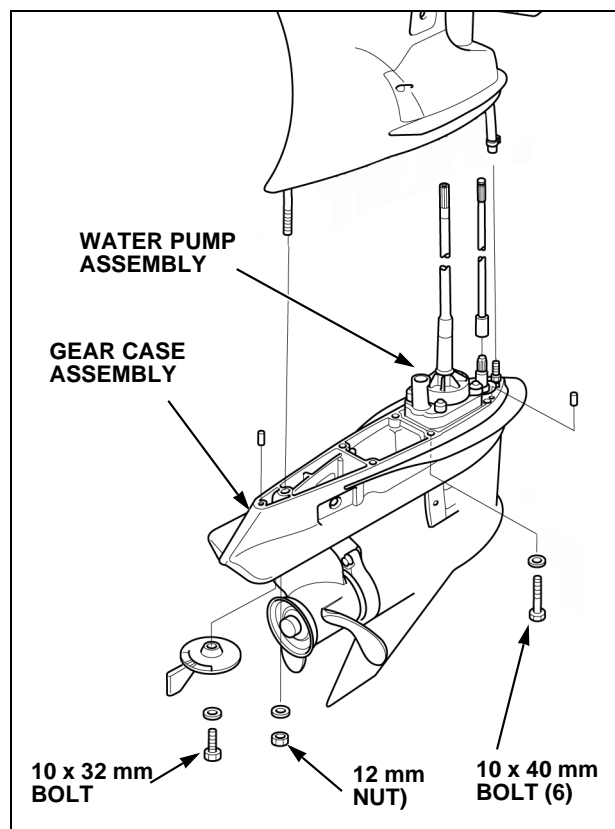
Prior to removing the gear case, make sure the outboard motor is secure on an engine stand or transom of a boat that is out of the water. Tilt the outboard motor up to the highest position and place the shift lever in the "N" (neutral) position.

Remove the 10 x 32 mm trim tab (or gear case cover) bolt to gain access to the gear case rear mounting nut.

For standard rotation models with a trim tab, check if the trim tab has been previously adjusted. If the "▲" marks do not align, mark the current location so the trim tab can be reinstalled in the same position.



Remove the six 10 x 40 mm bolts and washers, 12 mm nut and washer, and remove the gear case assembly. The vertical shaft will stay connected to the gear case, so remove the gear case without twisting, and then place the unit on a workbench.

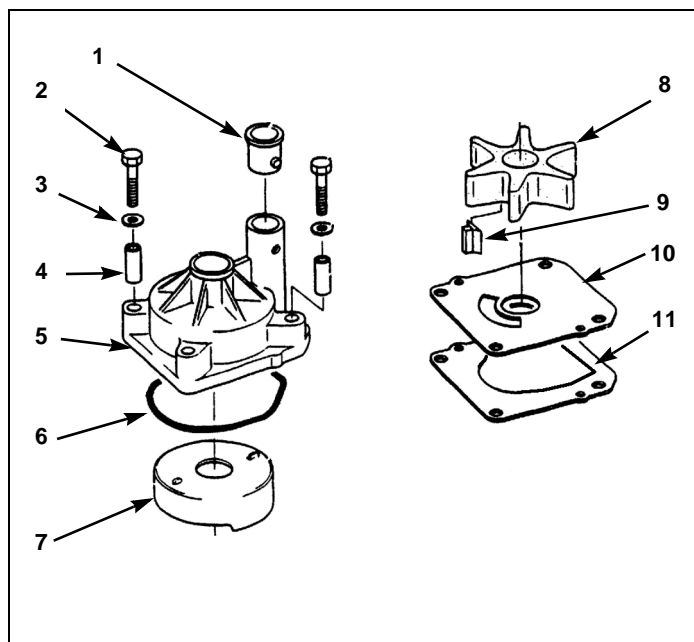




Remove the four water pump 8 x 60 mm bolts and washers and remove the pump assembly over the vertical shaft.

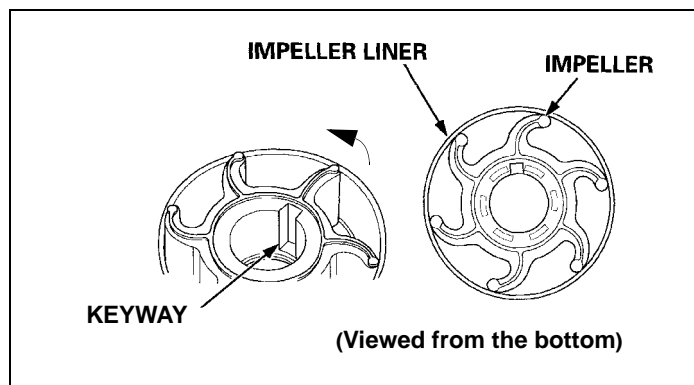
Clean all parts and check the impeller, liner, and cover for wear or cracks.

TYPE KIT	CONTENTS	PART NUMBER
Service kit	Impeller, Gasket, Woodruff key, O-Ring	06192-ZY3-000
Rebuild kit	1- Seal ring	06193-ZY3-000 K0 models
	2- Bolt (4)	
3- Washer (4)		
4- Collar (4)		
5- Housing		
6- O-Ring		
Rebuild kit	7- Liner	06193-ZY3-010 K1 models
	8- Impeller	
	9- Woodruff key	
	10- Cover	
	11- Gasket	



Start reassembling the pump by applying marine grease to the inner surface of the impeller liner, housing O-ring, and the water tube seal rubber.

Install the impeller by turning it counterclockwise into the impeller liner. Make sure the open end of the keyway is visible and will face out when installed in the pump.



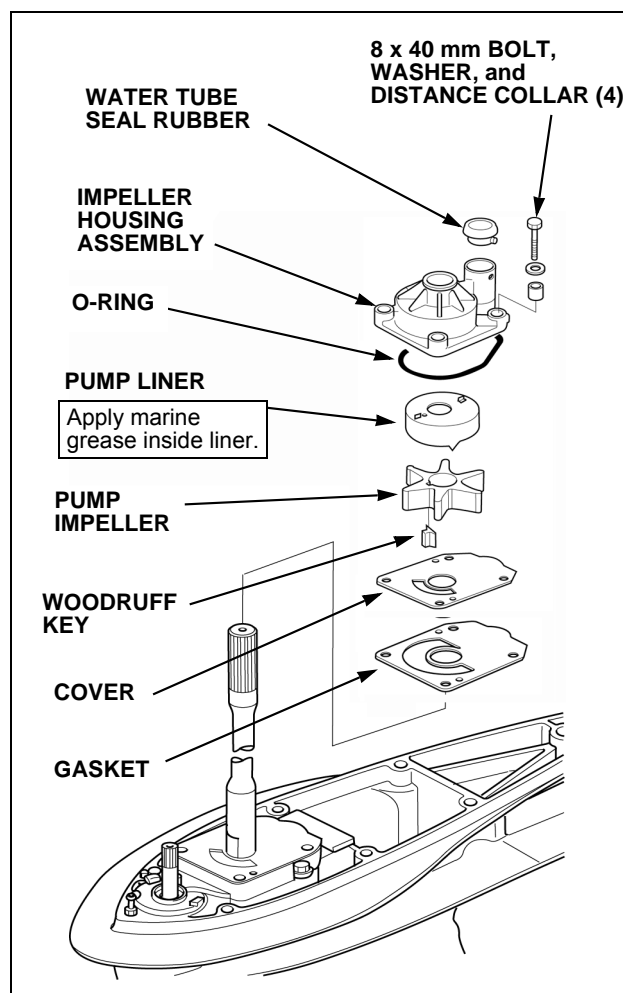
Insert a new greased O-ring and water tube seal rubber and four distance collars into the impeller housing. Install the pump liner/impeller into the housing.

Slide the pump gasket and cover over the shaft, aligning the holes with the pump base.

Place a small amount of marine grease on the Woodruff key and insert it onto the flat surface of the vertical shaft.

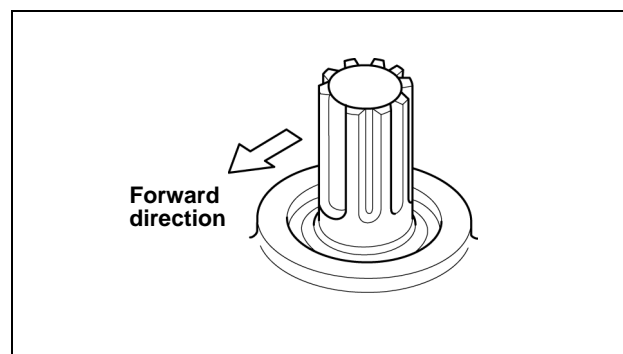
Slide the impeller housing assembly over the shaft, making sure to align the Woodruff key with the impeller keyway.

Install the 8 x 40 mm bolts, water tube seal holder, and two washers and torque to **15 ft•lb (20 N•m)** in a crisscross pattern to make sure the housing seats correctly.



Check that the shift shaft in the gear case is in the "N" (Neutral) position. The cutout in the shift shaft spline will be in the forward direction as shown.

Note that A2 thru A5 counter-rotating models will have the cutout in the rearward direction.



HONDA MARINE

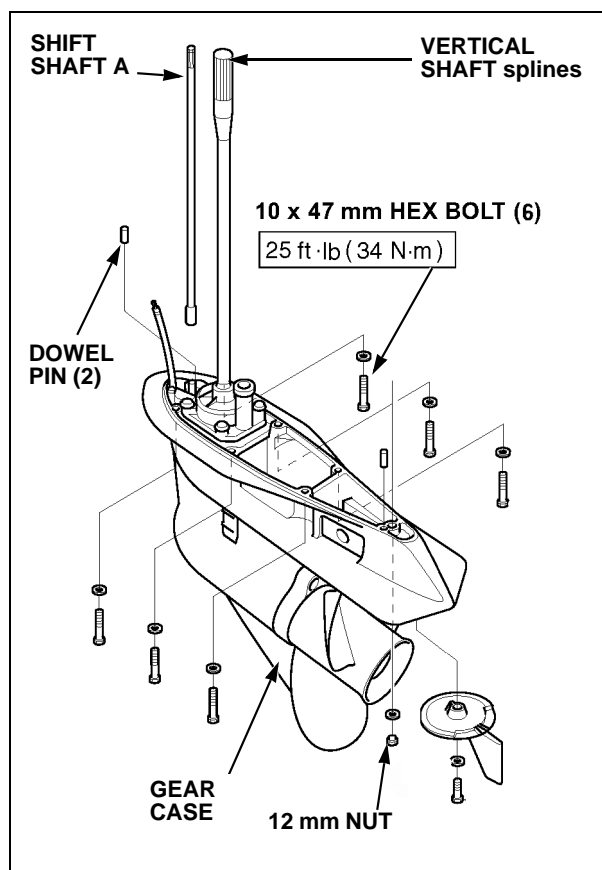
Apply marine grease to the water tube seal ring, two dowel pins, and the splines of the vertical shaft.

If shift shaft A was removed with the gear case, insert the upper end into into the motor before installing the gear case.

Install the gear case assembly into the motor, making sure the speed sensor tube is connected and aligning shift shaft A splines.

Start threading the six 10 x 40 mm bolts and washers and the 12 mm nut to hold the gear case in place.

Torque the 10 mm gear case bolts to **25 ft•lb (34 N•m)**.



Install the trim tab (or gear case cover) by aligning the “▲” marks as shown (or marks previously made).

Install and tighten the 10 x 32 mm bolt and washer.

