

Grass Blade Kit UMBK-25

Instruction Manual

- If you do not have a copy of the instruction manuals for the string trimmer attachment or powerhead, contact your authorized Honda dealer for assistance.
- Keep the instruction manual for the grass blade kit, string trimmer attachment, and powerhead together so that you can read them when necessary.

Specification

This blade kit is used by installing the string trimmer attachment to the following:

	Trimmer Attachment	Honda Powerhead
UMBK-25	SSST	UMC425A
		UMC435A

Intended Purpose

This blade kit (hereinafter referred to as "Product") is designed to be installed to the string trimmer (separately sold) for cutting grasses such as lawns, weeds, and bushes.

Do not use for any other purpose other than those originally intended. Do not use a saw-tooth blade instead of the 4 tooth, 9 inch steel blade supplied in this blade kit. The debris shield is only designed to be used with a 3 or 4 tooth grass cutting blade, and is not designed to be used with a saw-tooth blade. Do not use the blade kit's debris shield with the cutting line head.

Important Information

- For further information on handling the string trimmer attachment and powerhead, refer to the respective manual.
- We are not liable for any failure resulting from inappropriate handling, disassembling or modification not instructed in this instruction manual or act of God.
- We are not liable for any damage or injury resulting from any actions without due regard for general safety.
- For proper disposal of the product, observe the standards and regulations of your region.
- This instruction manual is subject to change without prior notice.
- Illustrations or figures shown in this instruction manual may partially differ from your product.
- This instruction manual is copyrighted and all rights are reserved by NIKKARI.
- This manual should be considered a permanent part of the blade kit and should remain with it if it is sold.

Inquiry/Selling dealer

If you have any questions about the Grass Blade Kit, contact an authorized Honda dealer for assistance.

Purchase date:

Selling dealer:

Safety

The following are instructions to prevent injury or property damage. Be sure to observe the instructions.

Degree of injuries or damages caused by negligence of the instructions are categorized as follows.

DANGER	Indicates an immediately hazardous situation which, if not avoided, will result in death or serious injury.
WARNING	Indicates a potentially hazardous situation which, if not avoided, can result in death or serious injury.
CAUTION	Indicates a potentially hazardous situation which, if not avoided, could result in mild to moderate injury or property damage.
Note	Indicates important information or provide helpful information.

DANGER
Do not use a saw-tooth blade with this Grass Blade Kit.
* Otherwise, it will cause serious injury or death if you do not follow these instructions.

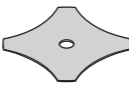




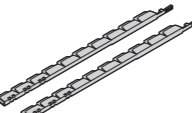
WARNING
Read the instruction manuals for the brush cutter attachment and powerhead thoroughly, and have a good understanding of the contents.
* Otherwise, it can cause serious injury or death if you do not follow these instructions.
Wear gloves when handling the steel blade.
* Otherwise, hands or fingers can be cut or severed.

- Note**
- Take care not to injure your legs with the cutting attachment.
 - Pay attention to the objects scattered by the cutting attachment. Do not use the trimmer/string trimmer with the grass debris shield removed.
 - Check to make sure that the grass cutting steel blade is not broken, chipped or bent.
- If there is any failure, contact your servicing dealer.
- Do not use a saw-tooth blade with this blade kit.

Parts List

Refer to the following list and make sure that you have all the necessary parts. If there is any part missing or damaged, contact your servicing dealer.

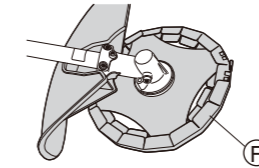
- Note**
- In this instruction manual, the parts below are shaded in gray.

	A Steel blade (4 tooth, 9", grass cutting)	1
	B Blade cap	1
	C Nut cover	1
	D Nut	1
	E Debris shield for 4 tooth, 9" grass cutting steel blade (Do not use a saw-tooth blade)	1
	F Transportation guard	2

Transporting and Storage

CAUTION
When transporting or storing this product, install the transportation guard onto the steel blade.
* It could cause injury due to contact with the steel blade or serious injury due to contact from the falling string trimmer attachment.
When storing this product, store it in a place where it is out of reach of children and animals.
* Otherwise, contact with the blade may result in serious injury.

When transporting or storing this product, install the transportation guard onto the steel blade.

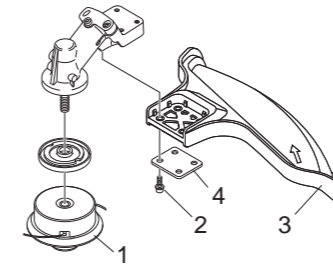


For transporting or storing procedures, refer to the Trimmer/Brush Cutter (SSST) attachment manual.

Assembling the Blade Kit

- Note**
- Be sure to use genuine parts.
 - Do not use a saw-tooth blade.

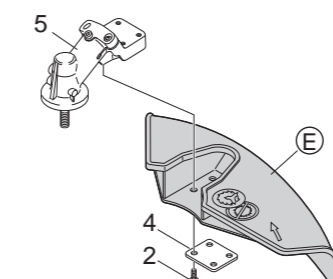
- 1 Stop the engine and remove the string trimmer attachment from the powerhead.
- 2 Put on gloves.
- 3 Remove the string trimmer head [1].
- 4 Loosen the screws [2], and remove the debris shield [3] and plate [4].



WARNING
Before using the steel blade, be sure to replace the debris shield with the one for the steel blade.
* Otherwise, it may cause injury due to flying objects such as grass and stones.

- Note**
- Store the removed debris shield [3] and string trimmer head [1] carefully.

- 5 Install the blade debris shield [E] and plate [4] onto the gear case [5] by tightening the four screws [2].



Installation and Removal of Steel Blade

The following shows the installation procedure for the blade :

- 1 Remove foreign objects such as grass and stones gathered in " * " part of the gear case [5].

CAUTION
Remove the foreign objects before using.
* If the product is used without removing the foreign objects, it could cause serious injury or damage to the gear case.

- 2 Align the center hole of the blade A with the boss of the blade holder [6], and install them onto the gear case [5].

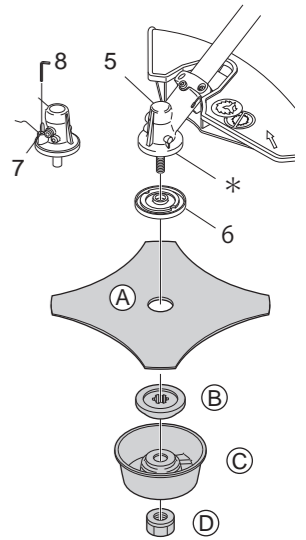
CAUTION
Align the center hole of the steel blade with the boss of the blade holder.
* Otherwise, a serious injury could be caused due to excessive vibration causing, or resulting in looseness of the nut.

- 3 Install the blade cap B and nut cover C.

- 4 Insert the L-wrench [8] into the hole [7] for fixing the gear case [5] to align with the groove or hole of the blade holder [6].

- 5 Turn the nut D with a wrench counterclockwise to attach it to the output shaft. Tighten the nut to the specified torque:
15 lbf-ft (20 N·m)

- Note**
- Loosening/tightening direction of this nut D is a left-hand thread (opposite).



Removal must be performed in the opposite order of the installation procedure.

Maintenance

CAUTION
Attempting to sharpen the steel blade could cause it to break.
* A broken blade could result in injury. Always have your dealer sharpen the steel blade.

For the maintenance of this product, refer to the Trimmer/Brush Cutter (SSST) attachment manual.

