

HONDA

Power

Equipment

HTA

OPERATOR'S MANUAL

SPRING SHANK CULTIVATOR

for

LIGHT DUTY TRACTORS

with

CATEGORY 0 3-POINT HITCH

WARRANTY SERVICE

Your satisfaction and goodwill **are** important to your dealer and to us. **All** Honda **warranty** details **are explained** in the Distributor's Limited Warranty at the back of **this** booklet. Normally, any problems concerning the product will **be** handled by your dealer's **service** department. If you have a warranty problem that has not been **handled** to your satisfaction, we suggest you take the following action:

- Discuss your problem with a member of dealership management. Often complaints **can be** quickly resolved at that level. If the problem has already been reviewed with the **Service** Manager, contact the owner of the dealership or the General Manager.
- If your problem still has not been resolved to your satisfaction, contact the Customer Relations Department of American Honda Motor **Co., Inc.:**

AMERICAN HONDA MOTOR CO., INC.
POWER EQUIPMENT DIVISION
4475 RIVER GREEN PARKWAY
DULUTH, GEORGIA 30136

CUSTOMER SERVICE DEPARTMENT
(404) 497-6400

We will need the following information **in** order to assist you:

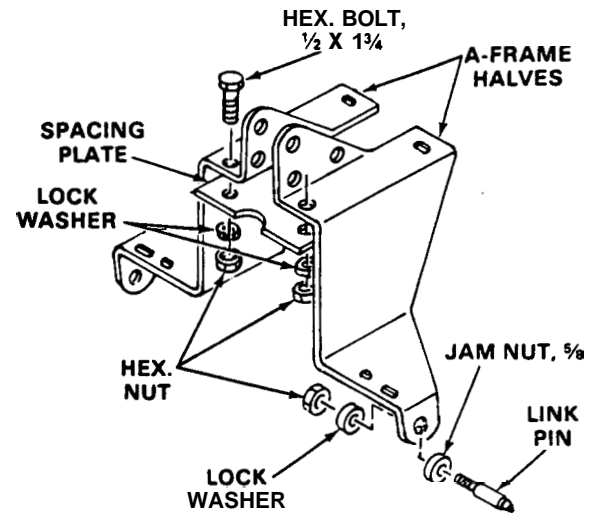
- Your name, address, and telephone number
- Product model **and serial** number
- Date of purchase
- Dealer name and address
- Nature of the problem

After reviewing **all** the facts involved, you **will** be advised of what action can be taken. **Please bear** in mind that your problem will likely be resolved at the dealership, using the dealer's facilities, equipment, and personnel, **so it is very** important that your initial contact be with the dealer.

Your purchase of a Honda product **is** greatly appreciated by both your dealer and American Honda Motor Company. We want to assist you in every way possible to assure your complete satisfaction with your purchase.

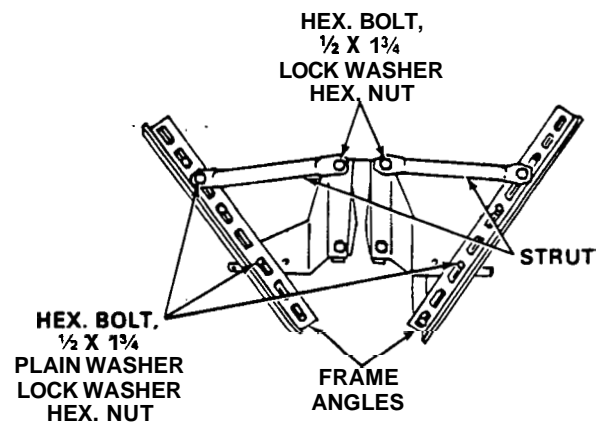
ASSEMBLY

1. Assemble the link pins to the A-frame halves using $\frac{5}{8}$ " jam nuts, lock washers and hex nuts.
2. Join the frame halves together with the spacing plate. Secure the plate at the front holes only with the hex bolts, lock washers and hex nuts. Finger-tighten the bolts.

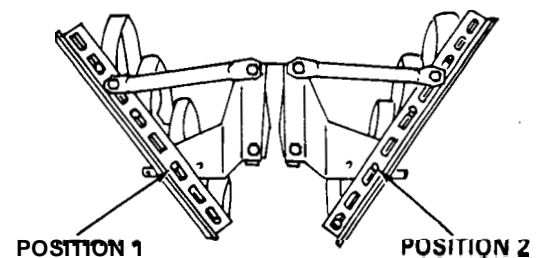


3. Assemble the frame angles to the A-frame as shown. Install the hex bolts, plain washers, lock washers and hex nuts: finger-tighten.
4. Install the struts first at the rear of the A-frame, and then at the rear of the frame angles. Finger-tighten the bolts.

NOTE The frame is shown assembled for the most common cutting position (90°). The cutting angle is determined by where the struts are attached to the frame angles.

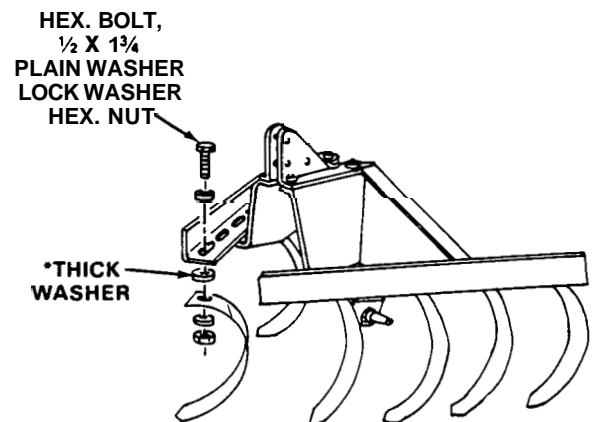


5. Assemble a spring shank at positions 1 and 2—where frame angles attach to A-frame—with existing hardware.



Assemble the remaining spring shanks as shown. Use $\frac{3}{8}$ " (thick) washers between the springs and frame angles.*

6. Align the springs and tighten all frame and spring bolts securely.

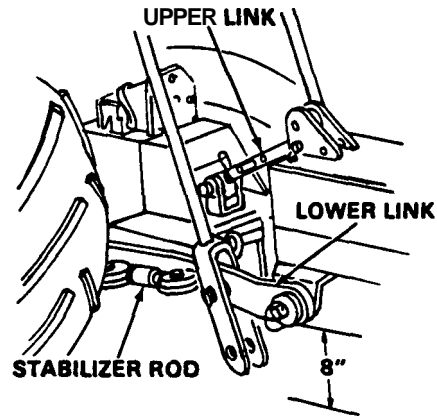


INSTALLATION

1. Adjust the tractor wheels as required to provide maximum plant foliage **clearance**.

With the hitch lowered, adjust the lower links **until** the link **balls** are approximately 8" **from** the ground.

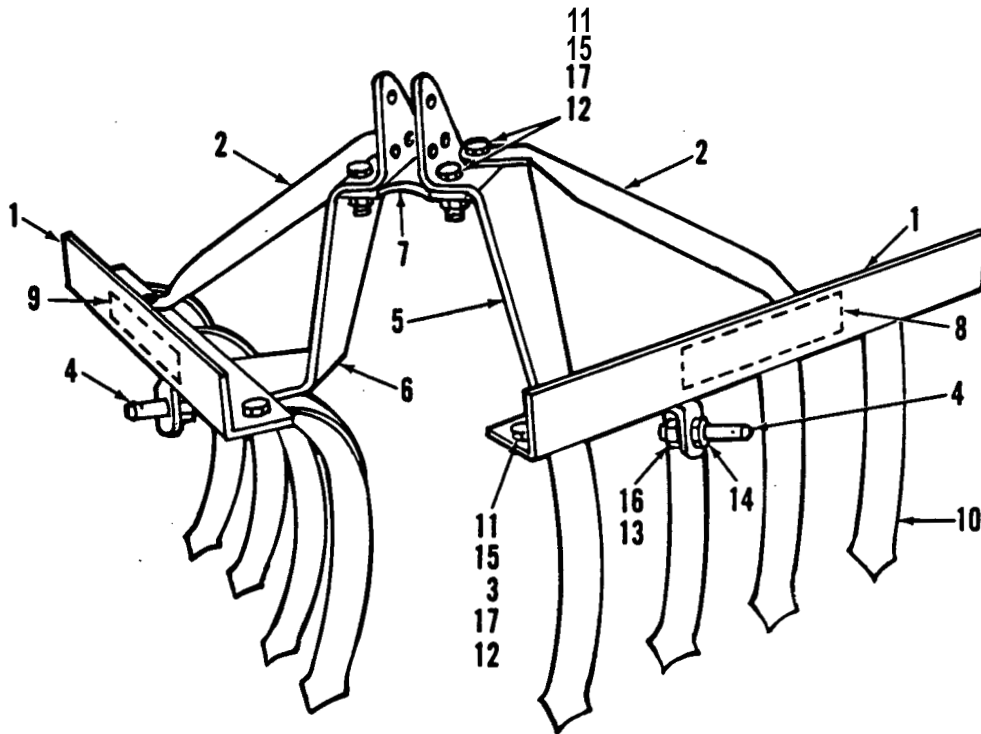
2. Attach the cultivator to the lower links and secure **with** spring pins.
3. Connect the upper link **rod** to the hitch and the **lower** hole in the A-Frame: secure with hitch and spring pins.



OPERATION

Adjust the cultivator angle and shank placement according to the type and row spacing of the crop: Reposition the **struts** to change the angle: remove the left **and** right front shanks for wider crops.

When necessary, adjust the upper link to make the front or rear shanks dig **shallower or deeper**.



**AMERICAN HONDA
SPRING SHANK CULTIVATOR**

REF. NO.	DESCRIPTION	REF. NO.	DESCRIPTION
1	Frame	10	Shank, Spring
2	Strut, Frame	11	Hex. Bolt, 1/2" X 1 3/4"
3	Washer, Special (3/8" thick)	12	Hex. Nut, 1/2"
4	Pin, Lower Link	13	Hex. Nut, 5/8"
5	"A" Frame, L.H.	14	Hex. Jam Nut, 5/8"
6	"A" Frame, R.H.	15	Lock Washer, 1/2"
7	Plate, Spacing	16	Lock Washer, 5/8"
8	Decal, Logo	17	Plain Washer, 1/2"
9	Decal, Serial/Model No.		

HONDA CODE # 3755782