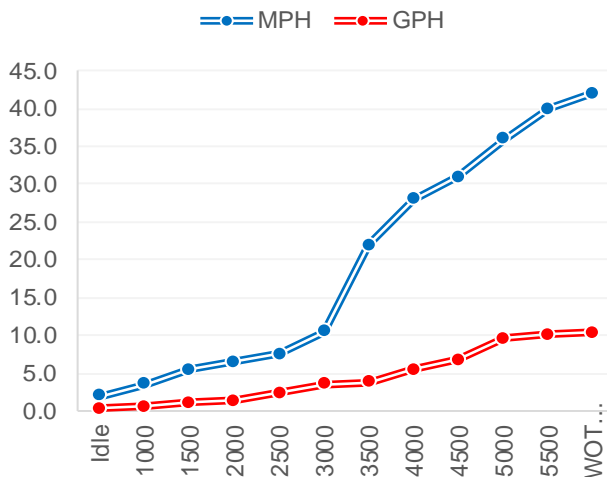




Performance Data

RPM	MPH	GPH	MPG
Idle	2.00	0.30	6.67
1000	3.50	0.60	5.83
1500	5.50	1.05	5.24
2000	6.50	1.40	4.64
2500	7.50	2.40	3.13
3000	10.50	3.50	3.00
3500	22.00	3.80	5.79
4000	28.00	5.40	5.19
4500	31.00	6.75	4.59
5000	36.00	9.55	3.77
5500	40.00	10.10	3.96
WOT 5750	42.00	10.30	4.08

Accel 0-20 MPH 5 sec
 Time to Plane 4.4



Boat

Boat Manufacture	Capecraft
Website	www.capecraft-boats.com
Model	190 Bay
Length	19
Beam	7.9
Dry Weight (lbs)	2200
Max HP	135
Fuel Cap. (gal)	36


Engine

Model	BF115 (X)
Horsepower	115
Displacement	2.4L 14
Weight (lbs)	485
Gear Ratio	2.14
Mounting Hole	#2
Prop Material	Stainless Steel
Diameter / Pitch	14 X 17 X 3
Honda Part #	58133-ZY3-A17AH

Test Conditions

No. of People	2
Fuel Load	30
Air Temperature	88
Test Conditions	Calm
Elevation	350
Wind Velocity	calm
Test Date	7/29/2014

Data presented should be used as a guide. Actual results may vary due to changes in weather, water conditions, elevation and load. Honda reserves the right to change the specifications on this report or it's engines without notice



The best warranty in the business.
Only Honda gives you a full, five years, non-declining warranty.

No strings. No catches. It's that simple.



marine.honda.com

© 2017 American Honda Motor Co., Inc