

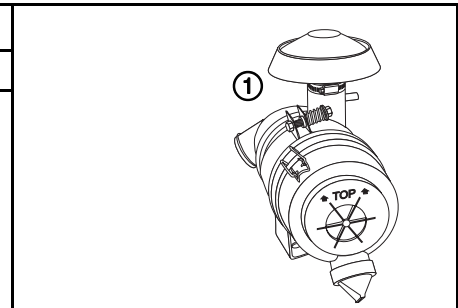
APPLICATION	AIR CLEANER KIT	PUBLICATION NO.
V-TWIN Engines	Honda Code (Whole Goods)	PII54274
GXV630R TAF2 GXV630R QYF2 GXV660R TAF2 GXV690R TAF2	GX630R TXF2 GX660R TXF2 GX690R TXF2 655630	<b>Issue Date</b> July 2011

### NOTICE

Failing to follow these instructions when installing this certified air cleaner kit in non-road equipment violates federal law (40 CFR 1068.105(b)), subjecting you to fines or other penalties as described in the Clean Air Act. Installer must meet the requirements of §1054.112 and 40 CFR part 1060. In order to maintain emission compliance, the use of an inner safety filter or other unauthorized modifications to the air cleaner kit is prohibited.

### PARTS LIST

Ref.	Description	Quantity
1	Air Cleaner Assembly	1

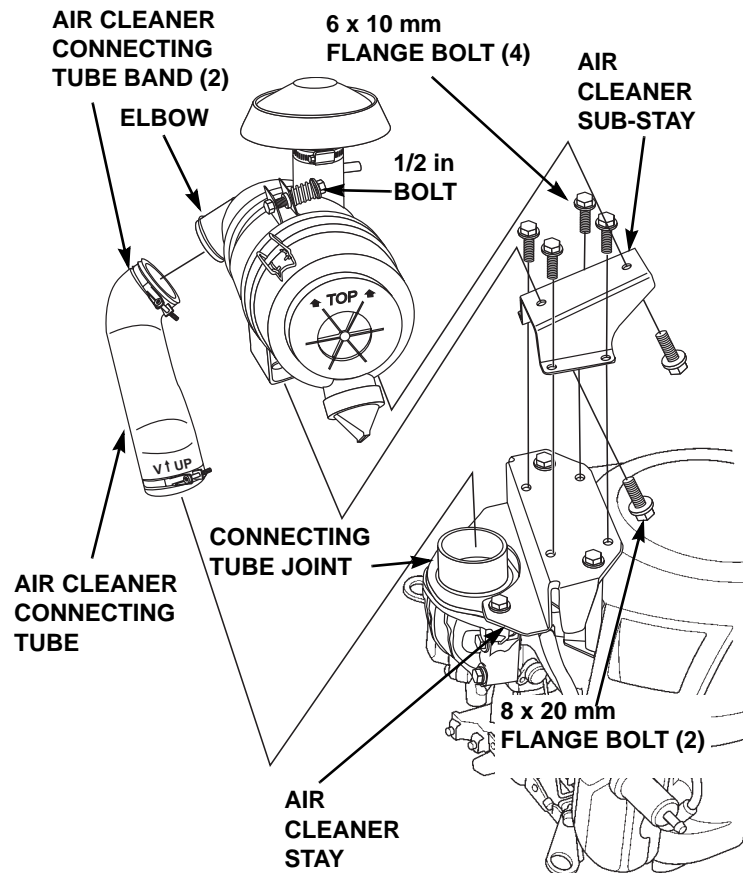


### INSTALLATION

#### • Vertical Shaft Types—GXV

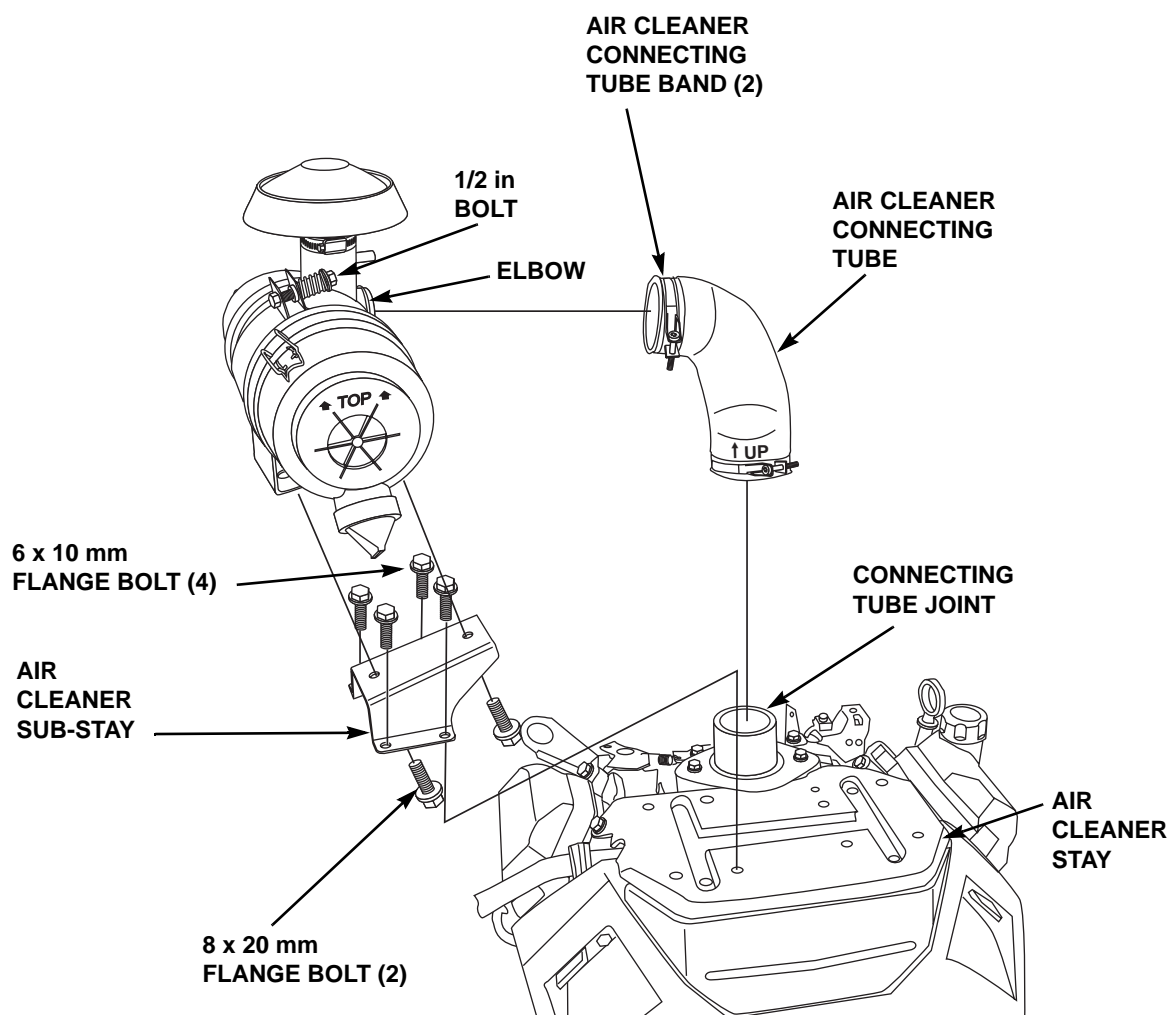
1. Install the air cleaner sub-stay to the air cleaner assembly base using the two 8 x 20 mm flange bolts.
2. Install the air cleaner sub-stay to the air cleaner stay using the four 6 x 10 mm flange bolts.
3. If necessary, loosen the 1/2 in bolt and rotate the air cleaner canister so that the "TOP" arrows are pointing UP. Tighten the bolt when finished.
4. Install the air cleaner connecting tube end marked "V ↑ UP" to the connecting tube joint and secure with an air cleaner connecting band.
5. Install the other end of the air cleaner connecting tube to the air cleaner canister elbow and secure with an air cleaner connecting tube band.

If necessary, rotate the air cleaner canister elbow so that the air cleaner connecting tube is not under any stress.



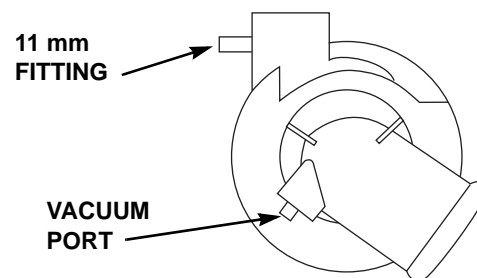
- **Horizontal Shaft Types—GX**

1. Install the air cleaner sub-stay to the air cleaner assembly base using the two 8 x 20 mm flange bolts.
  2. Install the air cleaner sub-stay to the air cleaner stay using the four 6 x 10 mm flange bolts.
  3. If necessary, loosen the 1/2 in bolt and rotate the air cleaner canister so that the "TOP" arrows are pointing UP. Tighten the bolt when finished.
  4. Install the air cleaner connecting tube end marked "↑ UP" to the connecting tube joint and secure with an air cleaner connecting band.
  5. Install the other end of the air cleaner connecting tube to the air cleaner canister elbow and secure with a air cleaner connecting tube band.
- If necessary, rotate the air cleaner canister elbow so that the air cleaner connecting tube is not under any stress.



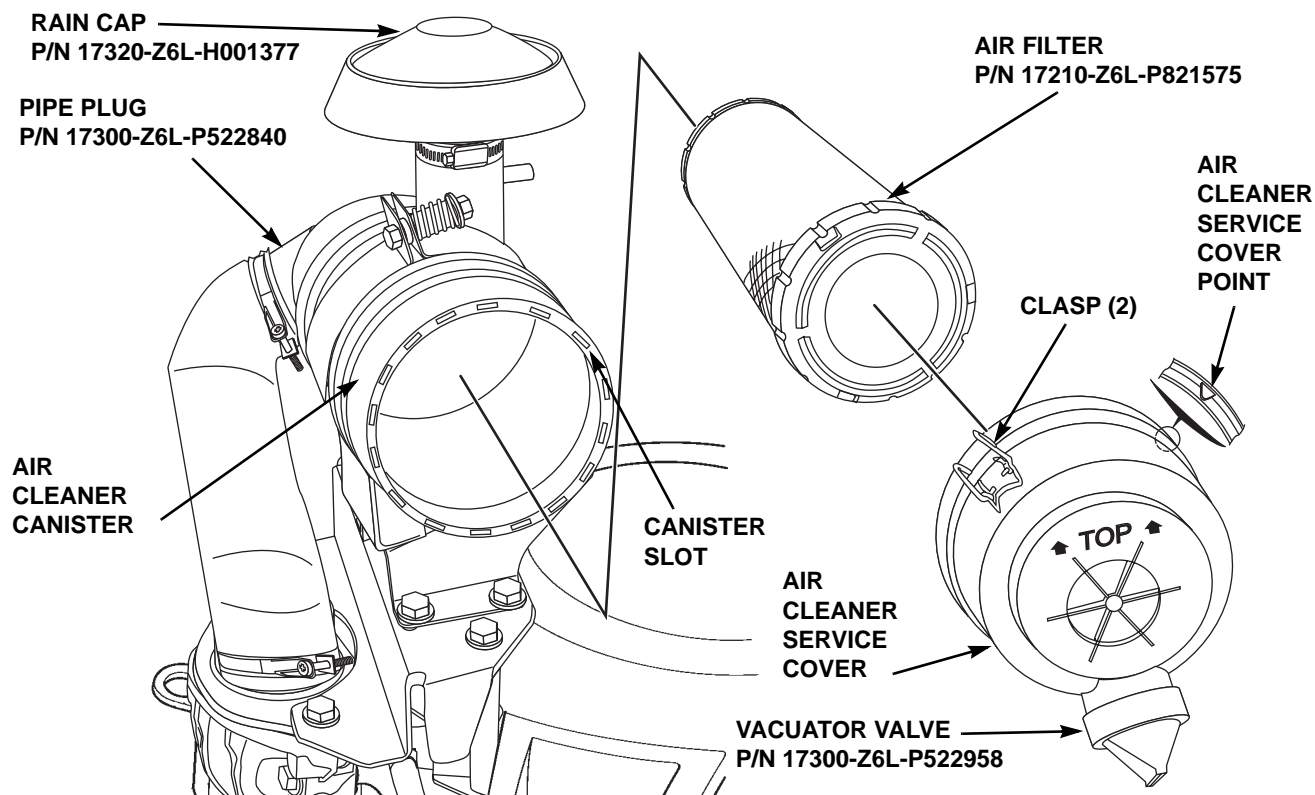
## CONNECTIONS

- 11 mm Fitting - Connect the equipment's evaporative purge hose here (if applicable).
- Vacuum Port - Connect a vacuum fitting (optional accessory) for the equipment's vacuum operation.



## MAINTENANCE

- Inspect the air filter before each use for plugging or damage. Inspect the air filter more frequently if used in dusty conditions.
1. Release the two clasps that secure the air cleaner service cover and remove it.
  2. Remove the air filter.
  3. Carefully check the air filter for holes or tears and replace if damaged. **Do not attempt to clean the air filter with compressed air or by washing.** Replace the air filter if it is dirty.
  4. Install the air filter, open end first, into the air cleaner canister. Seat the air filter by hand and make certain it is fully seated in the canister before installing the air cleaner service cover.
  5. Install the air cleaner service cover by aligning the cover point with a slot in the air cleaner canister, making sure that the "TOP" arrows are pointing UP. If the air cleaner service cover will not seat properly, remove the cover and push the air filter by hand again until it is properly seated in the air cleaner canister.
  6. Secure the air cleaner service cover by latching the two clasps.



**HONDA**